

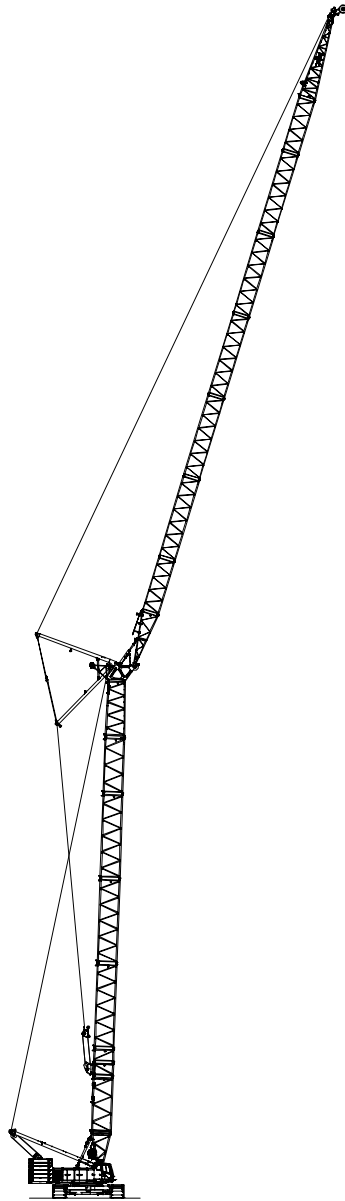
Technical Data

Luffing Capacities

348

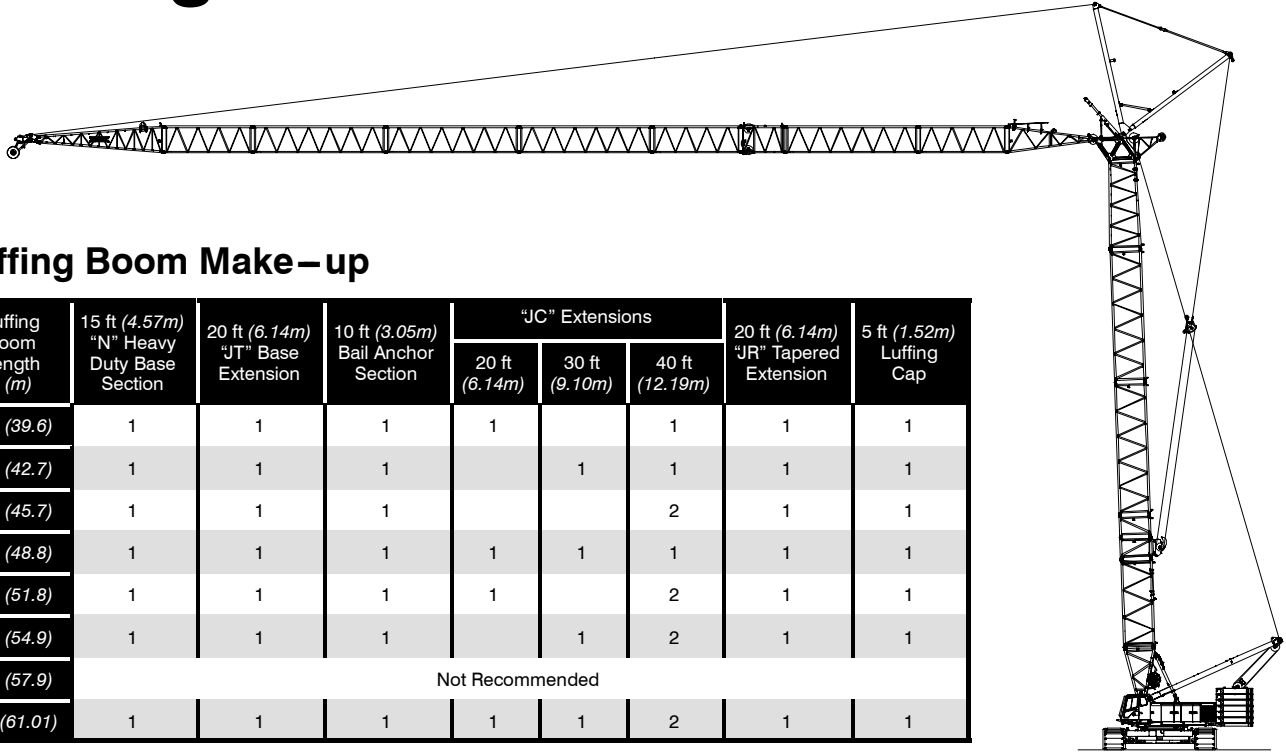
HYLAB 5

Luffing Attachment



CAUTION: This material is supplied for reference use only. Operator must refer to in-cab Crane Rating Manual and Operator's Manual to determine allowable crane lifting capacities and assembly and operating procedures.

Luffing Attachment



Luffing Boom Make-up

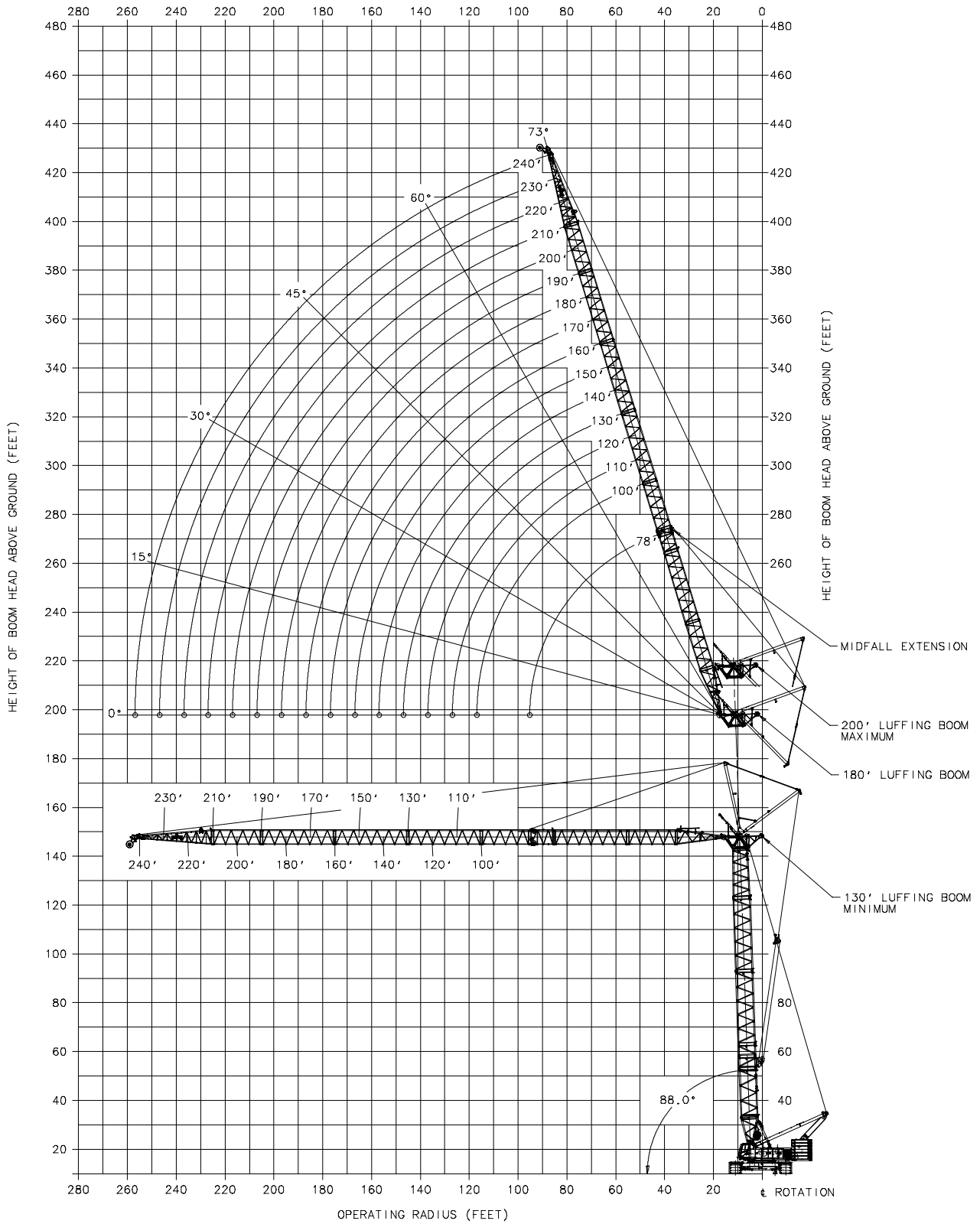
Luffing Boom Length ft (m)	15 ft (4.57m) "N" Heavy Duty Base Section	20 ft (6.14m) "JT" Base Extension	10 ft (3.05m) Bail Anchor Section	"JC" Extensions			20 ft (6.14m) "JR" Tapered Extension	5 ft (1.52m) Luffing Cap
				20 ft (6.14m)	30 ft (9.10m)	40 ft (12.19m)		
130 (39.6)	1	1	1	1		1	1	1
140 (42.7)	1	1	1		1	1	1	1
150 (45.7)	1	1	1			2	1	1
160 (48.8)	1	1	1	1	1	1	1	1
170 (51.8)	1	1	1	1		2	1	1
180 (54.9)	1	1	1		1	2	1	1
190 (57.9)	Not Recommended							
200 (61.01)	1	1	1	1	1	2	1	1

Luffing Jib Make-up

Luffing Jib Length ft (m)	20 ft (6.14m) "F" Base Section	"FE" Luffing Jib Extensions				30 ft (9.14m) "G" Long Range Top Section
		10 ft (3.05m)	20 ft (6.14m)	30 ft (9.10m)	40 ft (12.19m)	
100 (30.5)	1	1			1	1
110 (33.5)	1		1		1	1
120 (36.6)	1			1	1	1
130 (39.6)	1				2	1
140 (42.7)	1		1	1	1	1
150 (45.7)	1	1	1	1	1	1
160 (48.8)	1			1	2	1
170 (51.8)	1				3	1
180 (54.9)	1		1	1	2	1
190 (57.9)	1	1	1	1	2	1
200 (61.0)	1			1	3	1
210 (60.0)	1	1		1	3	1
220 (67.1)	1		1	1	3	1
230 (70.1)	1	1	1	1	3	1
240 (73.2)	1	2	1	1	3	1

Notes:

- Capacities shown are in kips/metric tons (1 kip = 1,000 lb / 1 metric ton = 0.45 kips) and are not more than 75% of the tipping loads with the crane standing level on a firm supporting surface. A deduction must be made from these capacities for the weight of the hook block, hook ball, sling, grapple, load weighing devices, etc. When lifting from the luffing jib with the fixed jib installed, reduce capacities by values shown in the Crane Rating Manual. See Operator's Manual for all limitations when raising or lowering attachment.
 - The capacities in the shaded areas are based on structural strength. The capacities in the non-shaded areas are based on stability ratings.
 - All luffing attachment combinations require the maximum counterweight combination "ABC+A".
 - Load ratings are based on freely suspended loads and make no allowances for such factors as the effect of the wind on load, ground conditions, and operating speeds. The operator shall therefore reduce load ratings in order to take these conditions into account. Refer to the Crane Rating Manual for Wind Speed Restrictions.
 - Refer to the Crane Rating Manual for allowable attachment liftoff lengths and allowable working lengths at the various luffing boom angles.
 - The fixed jib has only one length [40 ft (12.19m)] and only one offset with respect to the luffing jib (5°).
 - These capacities are in compliance with ASME/ANSI B30.5 at date of manufacture.
 - These capacities apply only to the crane as originally manufactured and normally equipped by Link-Belt Construction Equipment Company.
- * See Link-Belt® website, www.linkbelt.com, for complete luffing attachment working range details and capacities including fixed jib and midfall.



LS-348H 5 -- 360 Degree Capacities -- Extended Gage -- Luffing Jib
 80" X 95" Luffing Boom, 68" X 80" Luffing Jib, ABC + A Counterweight

Luffing Boom Length (ft)	Luffing Boom Length (m)	Luffing Jib Length (ft)	Luffing Jib Length (m)	Load Radius (ft)	Load Radius (m)	Luffing Boom Angle																								Load Radius (ft)
						88 Degrees				85 Degrees				80 Degrees				75 Degrees				70 Degrees				65 Degrees				
						Luffing Jib Angle (deg)	Tip Height (ft)	Rated Capacity (kips)	Rated Capacity (mt)	Luffing Jib Angle (deg)	Tip Height (ft)	Rated Capacity (kips)	Rated Capacity (mt)	Luffing Jib Angle (deg)	Tip Height (ft)	Rated Capacity (kips)	Rated Capacity (mt)	Luffing Jib Angle (deg)	Tip Height (ft)	Rated Capacity (kips)	Rated Capacity (mt)	Luffing Jib Angle (deg)	Tip Height (ft)	Rated Capacity (kips)	Rated Capacity (mt)	Luffing Jib Angle (deg)	Tip Height (ft)	Rated Capacity (kips)	Rated Capacity (mt)	
130	39.6	100	30.5	44	13.4	73.0	233.5	139.8	63.4	*																		44		
130	39.6	100	30.5	50	15.2	69.6	231.6	129.2	58.6	*																		50		
130	39.6	100	30.5	56	17.1					*	70.0	231.1	131.9	59.8	*													56		
130	39.6	100	30.5	60	18.3	63.3	227.2	111.8	50.7	*	67.6	229.6	124.8	56.6	*													60		
130	39.6	100	30.5	70	21.3	56.7	221.4	102.2	46.4	*	61.2	224.8	108.5	49.2	*													70		
130	39.6	100	30.5	75	22.9					*					*	65.0	225.8	99.1	45.0									75		
130	39.6	100	30.5	80	24.4	49.6	213.9	95.1	43.1	*	54.5	218.5	96.0	43.6	*	62.0	223.4	91.8	41.7									80		
130	39.6	100	30.5	90	27.4	41.5	204.1	84.9	38.5	*	47.1	210.3	82.7	37.5	*	55.3	217.4	79.4	36.0									90		
130	39.6	100	30.5	94	28.7					*					*	60.0	218.8	71.6	32.5									94		
130	39.6	100	30.5	100	30.5	31.9	190.7	74.6	33.8	*	38.6	199.6	72.7	33.0	*	48.0	209.4	69.4	31.5	56.0	215.1	66.1	30.0					100		
130	39.6	100	30.5	110	33.5	18.4	169.4	57.1	25.9	*	28.2	184.4	64.3	29.2	*	39.7	199.0	61.4	27.9	48.7	207.3	58.1	26.4					110		
130	39.6	100	30.5	112	34.1					*					*					55.0	210.2	53.4	24.2					112		
130	39.6	100	30.5	115	35.1	0.0	137.9	33.2	15.1	*					*													115		
130	39.6	100	30.5	120	36.6					*	11.2	156.5	49.1	22.3	*	29.6	184.6	54.5	24.7	40.6	197.2	51.5	23.4	49.2	204.0	48.5	22.0	120		
130	39.6	100	30.5	122	37.2					*	0.0	137.1	36.2	16.4	*													122		
130	39.6	100	30.5	129	39.3					*					*													129		
130	39.6	100	30.5	130	39.6					*					*	14.3	159.7	48.7	22.1	30.7	183.3	46.0	20.9	41.2	194.1	43.3	19.6	130		
130	39.6	100	30.5	133	40.5					*					*	0.0	135.2	40.6	18.4	*								133		
130	39.6	100	30.5	140	42.7					*					*					16.3	160.3	41.4	18.8	31.5	180.5	39.9	18.1	140		
130	39.6	100	30.5	144	43.9					*					*	0.0	132.2	40.4	18.3									144		
130	39.6	100	30.5	150	45.7					*					*					17.6	158.6	36.0	16.3	31.8	176.1	33.9	15.4	150		
130	39.6	100	30.5	155	47.2					*					*					0.0	128.3	34.2	15.5					155		
130	39.6	100	30.5	160	48.8					*					*													160		
130	39.6	100	30.5	165	50.3					*					*													165		
										*					*															
130	39.6	120	36.6	50	15.2	73.0	252.6	114.0	51.7	*					*													50		
130	39.6	120	36.6	60	18.3	68.0	249.1	104.5	47.4	*					*													60		
130	39.6	120	36.6	63	19.2					*	70.0	249.9	107.7	48.9	*													63		
130	39.6	120	36.6	70	21.3	62.8	244.6	92.6	42.0	*	66.4	247.1	101.6	46.1	*													70		
130	39.6	120	36.6	80	24.4	57.3	238.8	85.3	38.7	*	61.0	242.1	90.3	41.0	*													80		
130	39.6	120	36.6	84	25.6					*					*	65.0	243.9	85.5	38.8									84		
130	39.6	120	36.6	90	27.4	51.4	231.6	78.8	35.8	*	55.4	235.9	81.8	37.1	*	61.7	240.8	78.4	35.6									90		
130	39.6	120	36.6	100	30.5	45.0	222.7	74.0	33.6	*	49.4	228.2	71.9	32.6	*	56.1	234.7	68.5	31.1									100		
130	39.6	120	36.6	104	31.7					*					*	60.0	236.1	61.4	27.9									104		
130	39.6	120	36.6	110	33.5	37.8	211.3	65.4	29.7	*	42.8	218.6	63.6	28.9	*	50.1	227.2	60.3	27.4	56.7	232.4	56.9	25.8					110		
130	39.6	120	36.6	120	36.6	29.1	196.2	58.5	26.5	*	35.2	206.2	56.6	25.7	*	43.6	217.9	53.5	24.3	50.7	225.1	50.3	22.8					120		
130	39.6	120	36.6	124	37.8					*					*													124		
130	39.6	120	36.6	130	39.6	16.8	172.5	43.9	19.9	*	25.7	189.2	50.6	23.0	*	36.1	205.9	47.8	21.7	44.2	215.9	44.9	20.4	55.0	226.6	45.3	20.6	130		
130	39.6	120	36.6	135	41.1	0.0	137.9	26.0	11.8	*					*					51.1	221.7	42.1	19.1					135		
130	39.6	120	36.6	140	42.7					*	10.2	158.4	39.3	17.8	*	27.0	189.6	43.0	19.5	36.9	204.2	40.3	18.3	44.7	212.7	38.9	17.6	140		
130	39.6	120	36.6	142	43.3					*	0.0	137.1	28.5	12.9	*													142		
130	39.6	120	36.6	150	45.7					*					*	13.0	162.1	39.7	18.0	28.0	188.5	37.4	17.0	37.4	201.2	35.1	15.9	150		
130	39.6	120	36.6	153	46.6					*					*	0.0	135.2	33.0	15.0	*								153		
130	39.6	120	36.6	160	48.8					*					*	14.9	163.1	33.9	15.4	28.7	185.8	31.8	14.4	37.6	196.8	29.7	13.5	160		
130	39.6	120	36.6	164	50.0					*					*	0.0	132.2	32.6	14.8									164		
130	39.6	120	36.6	170	51.8					*					*					16.1	161.5	28.9	13.1	28.9	181.5	27.0	12.3	170		
130	39.6	120	36.6	175	53.3					*					*	0.0	128.3	27.6	12.5									175		
130	39.6	120	36.6	180	54.9					*					*													180		
130	39.6	120	36.6	185	56.4					*					*													185		
										*					*															
130	39.6	140	42.7	56	17.1	73.0	271.7	94.6	42.9	*					*													56		
130	39.6	140	42.7	60	18.3	71.3	270.5	91.9	41.7	*					*													60		
130	39.6	140	42.7	70	21.3	66.9	266.6	85.3	38.7	*	70.0	268.7	89.0	40.4	*													70		
130	39.6	140	42.7	80	24.4	62.4	261.9	76.7	34.8	*	65.5	264.5	82.6	37.5	*													80		
130	39.6	140	42.7	90	27.4	57.7	256.1	71.1	32.3	*	60.9	259.4	74.9	34.0	*													90		
130	39.6	140	42.7	92	28.0					*					*	65.0	262.0	75.0	34.0									92		
130	39.6	140	42.7	100	30.5	52.7	249.2	66.5	30.2	*	56.1	253.3	69.3	31.4	*	61.4	258.1	67.6	30.7									100		
130	39.6	140	42.7	110	33.5	47.3	240.8	62.4	28.3	*	51.0	245.9	62.8	28.5	*	56.7	252.1	59.2	26.9									110		
130	39.6	140	42.7	114	34.7					*					*	60.0	253.4	52.9	24.0									114		
130	39.6	140	42.7	120	36.6	41.5	230.6	57.6	26.1	*	45.5	237.0	55.6	25.2	*	51.6	244.9	52.3	23.7	57.1	249.8	49.1	22.3					120		
130	39.6	140	42.7	130	39.6	34.9	217.9	51.5	23.4	*	39.5	226.1	49.7	22.5	*	46.2	236.2	46.7	21.2	52.1	242.7	43.7	19.8					130		
130	39.6	140	42.7	135	41.1					*					*													135		
130	39.6	140	42.7	140	42.7	26.9	201.1	46.3	21.0	*	32.5	212.3	44.7																	

LS-348H 5 -- 360 Degree Capacities -- Extended Gage -- Luffing Jib
 80" X 95" Luffing Boom, 68" X 80" Luffing Jib, ABC + A Counterweight

Luffing Boom Length (ft)	Luffing Boom Length (m)	Luffing Jib Length (ft)	Luffing Jib Length (m)	Load Radius (ft)	Load Radius (m)	Luffing Boom Angle																				Load Radius (ft)									
						88 Degrees				85 Degrees				80 Degrees				75 Degrees				70 Degrees					65 Degrees								
						Luffing Jib Angle (deg)	Tip Height (ft)	Rated Capacity (kips)	Rated Capacity (mt)	Luffing Jib Angle (deg)	Tip Height (ft)	Rated Capacity (kips)	Rated Capacity (mt)	Luffing Jib Angle (deg)	Tip Height (ft)	Rated Capacity (kips)	Rated Capacity (mt)	Luffing Jib Angle (deg)	Tip Height (ft)	Rated Capacity (kips)	Rated Capacity (mt)	Luffing Jib Angle (deg)	Tip Height (ft)	Rated Capacity (kips)	Rated Capacity (mt)		Luffing Jib Angle (deg)	Tip Height (ft)	Rated Capacity (kips)	Rated Capacity (mt)					
130	39.6	200	61.0	74	22.6	73.0	329.1	53.1	24.1	*																							74		
130	39.6	200	61.0	80	24.4	71.1	327.0	50.9	23.1	*																							80		
130	39.6	200	61.0	90	27.4	68.0	323.3	47.6	21.6	*	70.0	325.1	49.2	22.3	*																		90		
130	39.6	200	61.0	100	30.5	64.9	318.9	44.5	20.2	*	67.0	321.2	46.1	20.9	*																		100		
130	39.6	200	61.0	110	33.5	61.7	313.9	41.6	18.9	*	63.9	316.7	43.2	19.6	*																		110		
130	39.6	200	61.0	118	36.0											65.0	316.4	43.6	19.8	*														118	
130	39.6	200	61.0	120	36.6	58.4	308.1	36.0	16.3	*	60.6	311.4	38.4	17.4	*	64.2	315.3	43.0	19.5	*														120	
130	39.6	200	61.0	130	39.6	54.9	301.6	32.6	14.8	*	57.3	305.4	34.9	15.8	*	61.0	310.1	38.3	17.4	*														130	
130	39.6	200	61.0	140	42.7	51.4	294.1	29.5	13.4	*	53.8	298.5	31.6	14.3	*	57.7	304.2	35.1	15.9	*														140	
130	39.6	200	61.0	144	43.9																													144	
130	39.6	200	61.0	150	45.7	47.6	285.5	26.6	12.1	*	50.2	290.7	28.6	13.0	*	54.2	297.4	32.1	14.6	*	60.0	305.4	35.5	16.1									150		
130	39.6	200	61.0	160	48.8	43.6	275.7	23.9	10.8	*	46.3	281.8	25.8	11.7	*	50.6	289.7	29.1	13.2	*	54.6	295.1	29.9	13.6									160		
130	39.6	200	61.0	169	51.5																55.0	292.1	24.7	11.2									169		
130	39.6	200	61.0	170	51.8	39.3	264.4	21.4	9.7	*	42.2	271.5	23.2	10.5	*	46.8	280.9	26.3	11.9	*	51.0	287.5	26.9	12.2	54.8	291.7	24.6	11.2					170		
130	39.6	200	61.0	180	54.9	34.5	251.0	19.1	8.7	*	37.8	259.6	20.8	9.4	*	42.7	270.8	23.7	10.8	*	47.2	278.9	24.3	11.0	51.2	284.2	22.2	10.1					180		
130	39.6	200	61.0	190	57.9	29.0	234.9	16.9	7.7	*	32.8	245.5	18.5	8.4	*	38.3	259.1	21.3	9.7	*	43.1	268.9	22.1	10.0	47.4	275.6	20.0	9.1					190		
130	39.6	200	61.0	194	59.1																													194	
130	39.6	200	61.0	200	61.0	22.4	214.1	14.8	6.7	*	27.1	228.1	16.4	7.4	*	33.4	245.3	19.1	8.7	*	38.8	257.4	20.0	9.1	43.4	265.7	18.1	8.2	50.0	276.7	17.3	7.8	200		
130	39.6	200	61.0	210	64.0	13.0	182.8	12.8	5.8	*	19.9	205.1	14.4	6.5	*	27.8	228.4	16.9	7.7	*	33.9	243.8	18.2	8.3	39.1	254.3	16.3	7.4	43.5	261.2	14.5	6.6	210		
130	39.6	200	61.0	215	65.5	0.0	137.9	8.1	3.7	*																								215	
130	39.6	200	61.0	220	67.1																													220	
130	39.6	200	61.0	222	67.7																													222	
130	39.6	200	61.0	230	70.1																													230	
130	39.6	200	61.0	233	71.0																													233	
130	39.6	200	61.0	240	73.2																													240	
130	39.6	200	61.0	244	74.4																													244	
130	39.6	200	61.0	250	76.2																													250	
130	39.6	200	61.0	255	77.7																													255	
130	39.6	200	61.0	260	79.2																													260	
130	39.6	200	61.0	265	80.8																													265	
130	39.6	220	67.1	79	24.1	73.0	348.2	43.5	19.7	*																								79	
130	39.6	220	67.1	80	24.4	72.8	348.1	43.4	19.7	*																									80
130	39.6	220	67.1	90	27.4	70.1	344.7	40.5	18.4	*																									90
130	39.6	220	67.1	97	29.6																														97
130	39.6	220	67.1	100	30.5	67.3	340.8	36.7	16.7	*	70.0	343.8	39.1	17.7	*																			100	
130	39.6	220	67.1	110	33.5	64.5	336.3	33.4	15.2	*	69.2	342.8	36.9	16.7	*																			110	
130	39.6	220	67.1	120	36.6	61.5	331.2	30.2	13.7	*	66.4	338.7	35.3	16.0	*																			120	
130	39.6	220	67.1	126	38.4																														126
130	39.6	220	67.1	130	39.6	58.5	325.5	27.1	12.3	*	65.0	334.5	33.1	15.0	*																			130	
130	39.6	220	67.1	140	42.7	55.4	319.0	24.2	11.0	*	63.9	332.6	31.9	14.5	*																			140	
130	39.6	220	67.1	150	45.7	52.2	311.6	21.6	9.8	*	60.9	327.4	29.0	13.2	*																			150	
130	39.6	220	67.1	154	46.9																														154
130	39.6	220	67.1	160	48.8	48.8	303.4	19.2	8.7	*	57.9	321.5	26.3	11.9	*																			160	
130	39.6	220	67.1	170	51.8	45.3	294.1	16.9	7.7	*	60.0	322.7	27.7	12.6	*	51.0	314.8	23.8	10.8	*	58.2	319.1	26.1	11.8	54.8	291.7	24.6	11.2					170		
130	39.6	220	67.1	180	54.9	41.5	283.5	14.7	6.7	*	55.1	307.3	21.3	9.7	*	47.7	299.8	18.5	8.4	*	55.1	312.6	23.7	10.8	51.2	284.2	22.2	10.1					180		
130	39.6	220	67.1	181	55.2																														181
130	39.6	220	67.1	190	57.9	37.4	271.3	12.8	5.8	*	44.1	290.1	16.3	7.4	*	51.8	298.9	18.9	8.6	*	51.8	305.1	21.4	9.7									190		
130	39.6	220	67.1	200	61.0	32.8	257.1	10.9	4.9	*	40.2	279.0	14.2	6.4	*	48.1	298.9	18.9	8.6	*	48.4	296.8	19.2	8.7	55.0	308.5	20.8	9.4					200		
130	39.6	220	67.1	206	62.8																														206
130	39.6	220	67.1	210	64.0	27.7	239.9	9.2	4.2	*	35.9	266.3	12.3	5.6	*	44.5	289.3	16.7	7.6	*	44.5	289.3	16.7	7.6	50.0	292.0	13.9	6.3					210		
130	39.6	220	67.1	220	67.1	21.4	218.0	7.5	3.4	*	31.2	251.2	10.5	4.8	*	40.6	278.4	14.6	6.6	*	41.0	276.6	15.0	6.8	48.8	288.9	13.4	6.1					220		
130	39.6	220	67.1	230	70.1	12.4	185.0	5.9	2.7	*	25.8	232.8	8.8	4.0	*	36.9	264.2	13.1	5.9	*	36.9	264.2	13.1	5.9	45.2	279.6	11.9	5.4					230		
130	39.6	220	67.1	235	71.6	0.0	137.9	4.9	2.2	*	18.9	208.5	7.1	3.2	*	32.3	249.7	11.3	5.1	*	32.3	249.7	11.3	5.1	41.4	269.0	10.6	4.8					235		
130	39.6	220	67.1	240	73.2																														240
130	39.6	220	67.1	242	73.8																														

LS-348H 5 -- 360 Degree Capacities -- Extended Gage -- Luffing Jib
80" X 95" Luffing Boom, 68" X 80" Luffing Jib, ABC + A Counterweight

Luffing Boom Length (ft)	Luffing Boom Length (m)	Luffing Jib Length (ft)	Luffing Jib Length (m)	Load Radius (ft)	Load Radius (m)	Luffing Boom Angle																				Load Radius (ft)												
						88 Degrees				85 Degrees				80 Degrees				75 Degrees				70 Degrees					65 Degrees											
						Luffing Jib Angle (deg)	Tip Height (ft)	Rated Capacity (kips)	Rated Capacity (mt)	Luffing Jib Angle (deg)	Tip Height (ft)	Rated Capacity (kips)	Rated Capacity (mt)	Luffing Jib Angle (deg)	Tip Height (ft)	Rated Capacity (kips)	Rated Capacity (mt)	Luffing Jib Angle (deg)	Tip Height (ft)	Rated Capacity (kips)	Rated Capacity (mt)	Luffing Jib Angle (deg)	Tip Height (ft)	Rated Capacity (kips)	Rated Capacity (mt)		Luffing Jib Angle (deg)	Tip Height (ft)	Rated Capacity (kips)	Rated Capacity (mt)								
140	42.7	180	54.9	70	21.3	72.4	319.4	62.4	28.3	*																									70			
140	42.7	180	54.9	80	24.4	69.0	315.9	58.2	26.4	*																									80			
140	42.7	180	54.9	84	25.6						70.0	316.2	58.9	26.7	*																				84			
140	42.7	180	54.9	90	27.4	65.5	311.7	54.4	24.7	*																									90			
140	42.7	180	54.9	100	30.5	62.0	306.8	50.8	23.0	*																									100			
140	42.7	180	54.9	110	33.5	58.3	301.0	47.4	21.5	*																									110			
140	42.7	180	54.9	111	33.8											65.0	308.1	52.7	23.9	*															111			
140	42.7	180	54.9	120	36.6	54.5	294.4	44.2	20.1	*						57.3	298.6	46.4	21.1	*															120			
140	42.7	180	54.9	130	39.6	50.5	286.7	38.3	17.4	*						53.4	291.7	43.2	19.6	*															130			
140	42.7	180	54.9	137	41.8																					60.0	297.7	38.8	17.6						137			
140	42.7	180	54.9	140	42.7	46.2	277.8	34.9	15.8	*						54.2	291.0	40.0	18.1	*						58.8	295.7	37.4	17.0					140				
140	42.7	180	54.9	150	45.7	41.6	267.4	31.8	14.4	*						50.2	283.3	36.5	16.6	*					54.9	289.2	33.5	15.2						150				
140	42.7	180	54.9	160	48.8	36.6	255.1	28.9	13.1	*						40.3	263.6	31.1	14.1	*					51.0	281.6	30.2	13.7						160				
140	42.7	180	54.9	161	49.1																				55.0	285.1	27.2	12.3						161				
140	42.7	180	54.9	170	51.8	30.9	240.1	26.2	11.9	*						35.1	250.6	28.3	12.8	*					46.7	272.9	27.3	12.4						170				
140	42.7	180	54.9	180	54.9	23.9	220.8	23.6	10.7	*						29.1	234.7	25.6	11.6	*					42.2	262.7	24.8	11.3							180			
140	42.7	180	54.9	185	56.4																											50.0	270.4	19.2	8.7	185		
140	42.7	180	54.9	190	57.9	14.2	191.9	21.1	9.6	*						21.7	213.7	23.1	10.5	*					42.9	260.2	20.3	9.2			47.9	266.0	18.2	8.3	190			
140	42.7	180	54.9	196	59.7	0.0	147.9	12.0	5.4	*																									196			
140	42.7	180	54.9	200	61.0						10.1	178.5	20.7	9.4	*										31.6	236.1	20.5	9.3			38.0	248.5	18.4	8.3	200			
140	42.7	180	54.9	203	61.9						0.0	147.2	13.8	6.3	*																				203			
140	42.7	180	54.9	210	64.0											13.3	186.3	20.6	9.3	*					24.8	217.4	18.6	8.4			32.5	234.3	16.7	7.6	210			
140	42.7	180	54.9	215	65.5											0.0	145.0	17.0	7.7	*																215		
140	42.7	180	54.9	220	67.1																				15.6	190.2	17.0	7.7			25.9	216.4	15.1	6.9	220			
140	42.7	180	54.9	227	69.2																			0.0	141.9	16.0	7.3								227			
140	42.7	180	54.9	230	70.1																															230		
140	42.7	180	54.9	238	72.5																																238	
140	42.7	180	54.9	240	73.2																																240	
140	42.7	180	54.9	249	75.9																																249	
140	42.7	200	61.0	74	22.6	73.0	339.1	52.1	23.6	*																										74		
140	42.7	200	61.0	80	24.4	71.2	337.1	50.0	22.7	*																											80	
140	42.7	200	61.0	90	27.4	68.1	333.4	46.8	21.2	*																											90	
140	42.7	200	61.0	91	27.7						70.0	335.0	48.3	21.9	*																					91		
140	42.7	200	61.0	100	30.5	65.0	329.1	43.8	19.9	*						67.3	331.6	45.6	20.7	*																	100	
140	42.7	200	61.0	110	33.5	61.8	324.1	40.9	18.6	*						64.1	327.1	42.7	19.4	*																	110	
140	42.7	200	61.0	119	36.3																				65.0	326.2	42.8	19.4	*							119		
140	42.7	200	61.0	120	36.6	58.5	318.3	35.7	16.2	*						60.9	321.9	38.3	17.4	*					64.8	325.9	42.7	19.4	*							120		
140	42.7	200	61.0	130	39.6	55.1	311.8	32.4	14.7	*						57.6	315.9	34.9	15.8	*					61.6	320.9	38.5	17.5	*							130		
140	42.7	200	61.0	140	42.7	51.5	304.3	29.3	13.3	*						54.1	309.1	31.6	14.3	*																	140	
140	42.7	200	61.0	147	44.8																																147	
140	42.7	200	61.0	150	45.7	47.7	295.8	26.5	12.0	*						50.5	301.4	28.6	13.0	*					60.0	315.0	33.7	15.3								150		
140	42.7	200	61.0	160	48.8	43.7	286.1	23.8	10.8	*						46.7	292.6	25.8	11.7	*					58.9	313.1	32.4	14.7								160		
140	42.7	200	61.0	170	51.8	39.4	274.8	21.3	9.7	*						42.6	282.4	23.2	10.5	*					51.2	301.0	29.3	13.3	*			55.5	306.6	29.1	13.2	170		
140	42.7	200	61.0	173	52.7																																173	
140	42.7	200	61.0	180	54.9	34.7	261.5	19.0	8.6	*						38.2	270.7	20.8	9.4	*					48.2	290.9	23.7	10.8	*			52.5	296.3	21.3	9.7	180		
140	42.7	200	61.0	190	57.9	29.2	245.5	16.9	7.7	*						33.3	256.8	18.6	8.4	*					44.2	281.3	21.4	9.7								190		
140	42.7	200	61.0	198	60.4																																198	
140	42.7	200	61.0	200	61.0	22.7	225.0	14.8	6.7	*						27.6	239.8	16.5	7.5	*					39.9	270.2	19.4	8.8	*			44.8	278.6	17.2	7.8	200		
140	42.7	200	61.0	210	64.0	13.4	194.3	12.8	5.8	*						20.6	217.4	14.4	6.5	*					35.2	257.2	17.6	8.0	*			40.6	267.8	15.5	7.0	210		
140	42.7	200	61.0	216	65.8	0.0	147.9	8.5	3.9	*																											216	
140	42.7	200	61.0	220	67.1						9.5	180.3	12.5	5.7	*																						220	
140	42.7	200	61.0	223	68.0						0.0	147.2	10.1	4.6	*																						223	
140	42.7	200	61.0	230	70.1																																	230
140	42.7	200	61.0	235	71.6																																	235
140	42.7	200	61.0																																			

LS-348H 5 -- 360 Degree Capacities -- Extended Gage -- Luffing Jib
80" X 95" Luffing Boom, 68" X 80" Luffing Jib, ABC + A Counterweight

Luffing Boom Length (ft)	Luffing Boom Length (m)	Luffing Jib Length (ft)	Luffing Jib Length (m)	Load Radius (ft)	Load Radius (m)	Luffing Boom Angle																				Load Radius (ft)				
						88 Degrees				85 Degrees				80 Degrees				75 Degrees				70 Degrees					65 Degrees			
						Luffing Jib Angle (deg)	Tip Height (ft)	Rated Capacity (kips)	Rated Capacity (mt)	Luffing Jib Angle (deg)	Tip Height (ft)	Rated Capacity (kips)	Rated Capacity (mt)	Luffing Jib Angle (deg)	Tip Height (ft)	Rated Capacity (kips)	Rated Capacity (mt)	Luffing Jib Angle (deg)	Tip Height (ft)	Rated Capacity (kips)	Rated Capacity (mt)	Luffing Jib Angle (deg)	Tip Height (ft)	Rated Capacity (kips)	Rated Capacity (mt)		Luffing Jib Angle (deg)	Tip Height (ft)	Rated Capacity (kips)	Rated Capacity (mt)
150	45.7	160	48.8	63	19.2	73.0	310.8	74.7	33.9	*																	63			
150	45.7	160	48.8	70	21.3	70.2	308.4	71.0	32.2	*																	70			
150	45.7	160	48.8	78	23.8						70.0	307.4	70.1	31.8	*												78			
150	45.7	160	48.8	80	24.4	66.4	304.4	66.2	30.0	*	69.4	306.8	69.3	31.4	*												80			
150	45.7	160	48.8	90	27.4	62.4	299.6	61.7	28.0	*	65.5	302.6	64.7	29.4	*												90			
150	45.7	160	48.8	100	30.5	58.3	293.9	57.4	26.0	*	61.5	297.6	60.5	27.5	*												100			
150	45.7	160	48.8	104	31.7											65.0	299.8	61.1	27.7								104			
150	45.7	160	48.8	110	33.5	53.9	287.2	53.5	24.3	*	57.3	291.7	56.5	25.6	*	62.7	297.0	56.5	25.6								110			
150	45.7	160	48.8	120	36.6	49.4	279.3	49.9	22.6	*	53.0	284.8	52.6	23.9	*	58.6	291.3	49.8	22.6								120			
150	45.7	160	48.8	129	39.3											60.0	290.1	41.0	18.6								129			
150	45.7	160	48.8	130	39.6	44.5	269.9	46.6	21.1	*	48.3	276.6	47.8	21.7	*	54.3	284.7	44.3	20.1								130			
150	45.7	160	48.8	140	42.7	39.1	258.7	42.9	19.5	*	43.3	266.9	43.0	19.5	*	49.7	276.9	39.6	18.0								140			
150	45.7	160	48.8	150	45.7	33.0	245.0	37.2	16.9	*	37.8	255.2	40.0	18.1	*	44.8	267.7	37.0	16.8								150			
150	45.7	160	48.8	153	46.6											51.0	275.8	33.9	15.4								153			
150	45.7	160	48.8	160	48.8	25.7	227.2	34.0	15.4	*	31.5	240.7	36.3	16.5	*	39.5	256.6	33.4	15.2			55.0	278.1	29.8	13.5		160			
150	45.7	160	48.8	170	51.8	15.5	200.6	30.4	13.8	*	23.8	221.7	33.1	15.0	*	33.5	243.1	30.4	13.8			52.0	273.2	27.8	12.6		170			
150	45.7	160	48.8	176	53.6	0.0	157.9	16.5	7.5	*						47.3	264.7	25.1	11.4			47.3	264.7	25.1	11.4		176			
150	45.7	160	48.8	180	54.9						12.2	191.0	29.4	13.3	*	26.3	225.7	27.7	12.6			50.0	264.2	21.1	9.6		180			
150	45.7	160	48.8	184	56.1						0.0	157.1	18.5	8.4	*							48.2	261.0	20.3	9.2		184			
150	45.7	160	48.8	190	57.9											16.5	200.1	25.3	11.5			43.2	251.2	18.3	8.3		190			
150	45.7	160	48.8	197	60.0											0.0	154.9	22.1	10.0	*							197			
150	45.7	160	48.8	200	61.0																19.5	205.0	20.9	9.5			200			
150	45.7	160	48.8	209	63.7																0.0	151.6	19.2	8.7			209			
150	45.7	160	48.8	210	64.0																21.9	206.7	17.0	7.7		31.4	225.0	14.9	6.8	210
150	45.7	160	48.8	220	67.1																8.0	169.2	15.4	7.0		23.6	205.8	13.5	6.1	220
150	45.7	160	48.8	222	67.7																0.0	147.2	15.2	6.9					222	
150	45.7	160	48.8	230	70.1																					11.9	174.6	12.2	5.5	230
150	45.7	160	48.8	233	71.0																					0.0	141.7	11.8	5.4	233
150	45.7	180	54.9	68	20.7	73.0	330.0	61.9	28.1	*																		68		
150	45.7	180	54.9	70	21.3	72.5	329.5	61.3	27.8	*																		70		
150	45.7	180	54.9	80	24.4	69.1	326.0	57.2	26.0	*																		80		
150	45.7	180	54.9	85	25.9						70.0	326.2	57.7	26.2	*													85		
150	45.7	180	54.9	90	27.4	65.7	321.8	53.5	24.3	*	68.4	324.4	55.9	25.4	*													90		
150	45.7	180	54.9	100	30.5	62.1	316.9	50.0	22.7	*	64.9	320.0	52.3	23.7	*													100		
150	45.7	180	54.9	110	33.5	58.5	311.2	46.7	21.2	*	61.3	315.0	49.0	22.2	*													110		
150	45.7	180	54.9	113	34.4											65.0	318.0	51.7	23.5	*								113		
150	45.7	180	54.9	120	36.6	54.6	304.6	43.5	19.7	*	57.6	309.1	45.9	20.8	*	62.4	314.3	48.6	22.1									120		
150	45.7	180	54.9	130	39.6	50.6	297.0	38.1	17.3	*	53.8	302.3	42.8	19.4	*	58.7	308.7	43.1	19.6									130		
150	45.7	180	54.9	139	42.4											60.0	307.4	36.9	16.7									139		
150	45.7	180	54.9	140	42.7	46.4	288.1	34.7	15.7	*	49.7	294.4	37.4	17.0	*	54.9	302.1	39.9	18.1			59.7	306.9	36.5	16.6		140			
150	45.7	180	54.9	150	45.7	41.8	277.8	31.6	14.3	*	45.4	285.2	34.1	15.5	*	50.9	294.6	35.9	16.3			56.0	300.6	32.7	14.8		150			
150	45.7	180	54.9	160	48.8	36.8	265.6	28.7	13.0	*	40.8	274.5	31.1	14.1	*	46.7	285.8	32.4	14.7			52.0	293.4	29.5	13.4		160			
150	45.7	180	54.9	165	50.3																							165		
150	45.7	180	54.9	170	51.8	31.1	250.7	26.0	11.8	*	35.6	261.8	28.3	12.8	*	42.2	275.6	29.4	13.3			47.9	285.0	26.6	12.1		170			
150	45.7	180	54.9	180	54.9	24.2	231.6	23.5	10.7	*	29.7	246.2	25.7	11.7	*	37.2	263.6	26.7	12.1			43.4	275.2	24.1	10.9		180			
150	45.7	180	54.9	189	57.6																							189		
150	45.7	180	54.9	190	57.9	14.6	203.2	21.0	9.5	*	22.5	225.8	23.2	10.5	*	31.5	248.9	24.3	11.0			38.5	263.7	21.8	9.9		190			
150	45.7	180	54.9	196	59.7	0.0	157.9	12.4	5.6	*																		196		
150	45.7	180	54.9	200	61.0						11.5	193.1	20.7	9.4	*	24.8	230.2	22.2	10.1			33.1	249.8	19.8	9.0		200			
150	45.7	180	54.9	204	62.2						0.0	157.1	14.2	6.4	*													204		
150	45.7	180	54.9	210	64.0											15.5	202.9	20.2	9.2			26.7	232.4	18.0	8.2		210			
150	45.7	180	54.9	217	66.1											0.0	154.9	17.5	7.9	*								217		
150	45.7	180	54.9	220	67.1																							220		
150	45.7	180	54.9	229	69.8																							229		
150	45.7	180	54.9	230	70.1																							230		
150	45.7	180	54.9	240	73.2																							240		
150	45.7	180	54.9	242	73.8																							242		
150	45.7	180	54.9	250	76.2																							250		
150	45.7	180	54.9	253	77.1																							253		
150	45.7	200	61.0	74	22.6	73.0	349.1	51.0	23.1	*																		74		
150	45.7	200	61.0	80	24.4	71.3	347.2	49.1	22.3	*																		80		
150	45.7	200	61.0	90	27.4	68.2	343.6	46.0	20.9	*																		90		
150	45.7	200	61.0	92	28.0						70.0	345.0	47.3	21.5	*													92		
150	45.7	200	61.0	100																										

LS-348H 5 -- 360 Degree Capacities -- Extended Gage -- Luffing Jib
 80" X 95" Luffing Boom, 68" X 80" Luffing Jib, ABC + A Counterweight

Luffing Boom Length (ft)	Luffing Boom Length (m)	Luffing Jib Length (ft)	Luffing Jib Length (m)	Load Radius (ft)	Load Radius (m)	Luffing Boom Angle																				Load Radius (ft)						
						88 Degrees				85 Degrees				80 Degrees				75 Degrees				70 Degrees					65 Degrees					
						Luffing Jib Angle (deg)	Tip Height (ft)	Rated Capacity (kips)	Rated Capacity (mt)	Luffing Jib Angle (deg)	Tip Height (ft)	Rated Capacity (kips)	Rated Capacity (mt)	Luffing Jib Angle (deg)	Tip Height (ft)	Rated Capacity (kips)	Rated Capacity (mt)	Luffing Jib Angle (deg)	Tip Height (ft)	Rated Capacity (kips)	Rated Capacity (mt)	Luffing Jib Angle (deg)	Tip Height (ft)	Rated Capacity (kips)	Rated Capacity (mt)		Luffing Jib Angle (deg)	Tip Height (ft)	Rated Capacity (kips)	Rated Capacity (mt)		
160	48.8	180	54.9	120	36.6	54.8	314.9	42.8	19.4	58.0	319.6	45.3	20.6	63.0	325.1	47.9	21.7															120
160	48.8	180	54.9	130	39.6	50.8	307.3	37.8	17.2	54.1	312.9	42.3	19.2	59.4	319.6	42.4	19.2														130	
160	48.8	180	54.9	140	42.7	46.5	298.5	34.5	15.7	50.1	305.1	37.3	16.9	55.6	313.2	39.4	17.9														140	
160	48.8	180	54.9	142	43.3														60.0	317.0	34.9	15.8									142	
160	48.8	180	54.9	150	45.7	42.0	288.2	31.4	14.2	45.8	296.1	34.1	15.5	51.6	305.8	35.4	16.1	56.9	312.0	31.9	14.5										150	
160	48.8	180	54.9	160	48.8	37.0	276.0	28.6	13.0	41.2	285.5	31.1	14.1	47.5	297.3	31.9	14.5	53.1	305.0	28.7	13.0										160	
160	48.8	180	54.9	168	51.2																	55.0	303.9	23.4	10.6						168	
160	48.8	180	54.9	170	51.8	31.3	261.3	25.9	11.8	36.1	273.0	28.3	12.8	43.0	287.4	28.9	13.1	49.0	296.9	25.9	11.8	54.3	302.7	22.9	10.4						170	
160	48.8	180	54.9	180	54.9	24.5	242.4	23.4	10.6	30.3	257.7	25.6	11.6	38.1	275.7	26.2	11.9	44.6	287.5	23.4	10.6	50.3	294.9	20.6	9.3						180	
160	48.8	180	54.9	190	57.9	15.0	214.6	21.0	9.5	23.2	237.8	23.2	10.5	32.6	261.5	23.8	10.8	39.8	276.5	21.2	9.6	46.0	286.0	18.6	8.4						190	
160	48.8	180	54.9	193	58.8																										193	
160	48.8	180	54.9	196	59.7	0.0	167.8	12.7	5.8																						196	
160	48.8	180	54.9	200	61.0					12.9	207.1	20.8	9.4	26.1	243.7	21.7	9.8	34.6	263.3	19.2	8.7	41.4	275.5	16.7	7.6	50.0	288.6	15.4	7.0	200		
160	48.8	180	54.9	204	62.2	0.0	167.0	14.5	6.6																						204	
160	48.8	180	54.9	210	64.0									17.5	218.7	19.8	9.0	28.5	247.0	17.4	7.9	36.3	263.1	15.1	6.9	42.7	272.7	12.8	5.8	210		
160	48.8	180	54.9	218	66.4					0.0	164.7	17.9	8.1																		218	
160	48.8	180	54.9	220	67.1									20.9	225.3	15.8	7.2					30.5	247.9	13.6	6.2	37.7	260.8	11.4	5.2	220		
160	48.8	180	54.9	230	70.1									8.1	186.6	14.4	6.5					23.5	228.3	12.3	5.6	32.2	246.5	10.2	4.6	230		
160	48.8	180	54.9	232	70.7									0.0	161.2	14.1	6.4														232	
160	48.8	180	54.9	240	73.2																	13.5	198.5	11.0	5.0	25.6	228.4	9.1	4.1	240		
160	48.8	180	54.9	245	74.7																	0.0	156.6	10.5	4.8						245	
160	48.8	180	54.9	250	76.2																										250	
160	48.8	180	54.9	258	78.6																										258	
160	48.8	200	61.0	75	22.9	73.0	359.1	49.9	22.6																						75	
160	48.8	200	61.0	80	24.4	71.4	357.4	48.2	21.9																						80	
160	48.8	200	61.0	90	27.4	68.3	353.7	45.1	20.5																						90	
160	48.8	200	61.0	93	28.3					70.0	354.9	46.3	21.0																		93	
160	48.8	200	61.0	100	30.5	65.2	349.4	42.3	19.2	67.8	352.2	44.2	20.1																		100	
160	48.8	200	61.0	110	33.5	62.0	344.4	38.6	17.5	64.7	347.8	41.5	18.8																		110	
160	48.8	200	61.0	120	36.6	58.7	338.8	35.2	16.0	61.5	342.7	38.0	17.2																		120	
160	48.8	200	61.0	123	37.5									65.0	345.9	41.1	18.6															123
160	48.8	200	61.0	130	39.6	55.3	332.3	31.9	14.5	58.2	336.9	34.7	15.7	62.7	342.4	38.4	17.4														130	
160	48.8	200	61.0	140	42.7	51.7	324.9	28.9	13.1	54.7	330.3	31.5	14.3	59.4	336.9	35.5	16.1														140	
160	48.8	200	61.0	150	45.7	48.0	316.4	26.1	11.8	51.1	322.7	28.5	12.9	56.0	330.6	32.6	14.8														150	
160	48.8	200	61.0	152	46.3														60.0	334.4	30.1	13.7									152	
160	48.8	200	61.0	160	48.8	44.0	306.8	23.5	10.7	47.4	314.1	25.8	11.7	52.5	323.4	29.7	13.5	57.2	329.4	27.5	12.5									160		
160	48.8	200	61.0	170	51.8	39.7	295.6	21.1	9.6	43.3	304.2	23.2	10.5	48.8	315.2	26.9	12.2	53.8	322.5	24.7	11.2										170	
160	48.8	200	61.0	180	54.9	35.0	282.5	18.8	8.5	39.0	292.8	20.8	9.4	44.9	305.8	24.3	11.0	50.1	314.7	22.3	10.1	55.0	320.3	19.5	8.8						180	
160	48.8	200	61.0	190	57.9	29.6	266.7	16.7	7.6	34.2	279.3	18.6	8.4	40.7	295.0	21.9	9.9	46.3	305.7	20.1	9.1	51.3	312.6	17.4	7.9						190	
160	48.8	200	61.0	200	61.0	23.2	246.6	14.7	6.7	28.7	262.9	16.5	7.5	36.0	282.4	19.7	8.9	42.2	295.5	18.1	8.2	47.5	304.0	15.6	7.1						200	
160	48.8	200	61.0	206	62.8																											206
160	48.8	200	61.0	210	64.0	14.3	217.1	12.7	5.8	22.0	241.8	14.5	6.6	30.8	267.2	17.5	7.9	37.7	283.5	16.4	7.4	43.5	294.2	13.9	6.3	50.0	303.9	12.1	5.5	210		
160	48.8	200	61.0	216	65.8	0.0	167.8	9.1	4.1																							216
160	48.8	200	61.0	220	67.1					12.2	209.3	12.6	5.7	24.7	248.2	15.5	7.0	32.8	269.4	14.8	6.7	39.2	282.8	12.5	5.7	44.6	291.2	10.2	4.6	220		
160	48.8	200	61.0	224	68.3					0.0	167.0	10.8	4.9																			224
160	48.8	200	61.0	230	70.1									16.6	221.7	13.6	6.2	27.0	252.0	13.3	6.0	34.4	269.4	11.1	5.0	40.4	280.3	9.0	4.1	230		
160	48.8	200	61.0	238	72.5									0.0	164.7	11.9	5.4															238
160	48.8	200	61.0	240	73.2																											240
160	48.8	200	61.0	250	76.2																											250
160	48.8	200	61.0	252	76.8																											252
160	48.8	200	61.0	260	79.2																											260
160	48.8	200	61.0	265	80.8																											265
160	48.8	200	61.0	270	82.3																											270
160	48.8	200	61.0	278	84.7																											278
160	48.8	220	67.1	80	24.4	73.0	378.2	40.8	18.5																							80
160	48.8	220	67.1	90	27.4	70.4	375.1	37.6	17.1																							90
160	48.8	220	67.1	100	30.5	67.6	371.2	35.3	16.0	70.0	373.7	36																				

LS-348H 5 -- 360 Degree Capacities -- Extended Gage -- Luffing Jib
80" X 95" Luffing Boom, 68" X 80" Luffing Jib, ABC + A Counterweight

Luffing Boom Length (ft)	Luffing Boom Length (m)	Luffing Jib Length (ft)	Luffing Jib Length (m)	Load Radius (ft)	Load Radius (m)	Luffing Boom Angle																				Load Radius (ft)				
						88 Degrees				85 Degrees				80 Degrees				75 Degrees				70 Degrees					65 Degrees			
						Luffing Jib Angle (deg)	Tip Height (ft)	Rated Capacity (kips)	Rated Capacity (mt)	Luffing Jib Angle (deg)	Tip Height (ft)	Rated Capacity (kips)	Rated Capacity (mt)	Luffing Jib Angle (deg)	Tip Height (ft)	Rated Capacity (kips)	Rated Capacity (mt)	Luffing Jib Angle (deg)	Tip Height (ft)	Rated Capacity (kips)	Rated Capacity (mt)	Luffing Jib Angle (deg)	Tip Height (ft)	Rated Capacity (kips)	Rated Capacity (mt)		Luffing Jib Angle (deg)	Tip Height (ft)	Rated Capacity (kips)	Rated Capacity (mt)
160	48.8	220	67.1	180	54.9	41.9	314.7	14.5	6.6	45.0	322.6	16.3	7.4	49.9	333.0	19.5	8.8	54.4	339.9	21.1	9.6							180		
160	48.8	220	67.1	190	57.9	37.8	302.7	12.6	5.7	41.2	312.0	14.3	6.5	46.4	324.0	17.3	7.8	51.1	332.3	18.8	8.5							190		
160	48.8	220	67.1	191	58.2																							191		
160	48.8	220	67.1	200	61.0	33.3	288.7	10.7	4.9	37.1	299.7	12.4	5.6	42.7	313.8	15.2	6.9	47.7	323.8	17.0	7.7	55.0	336.7	16.0	7.3			200		
160	48.8	220	67.1	210	64.0	28.2	271.9	9.0	4.1	32.5	285.3	10.6	4.8	38.7	302.2	13.3	6.0	44.0	314.0	15.3	6.9	48.8	321.9	12.8	5.8			210		
160	48.8	220	67.1	219	66.8																							219		
160	48.8	220	67.1	220	67.1	22.1	250.6	7.4	3.4	27.3	267.9	8.9	4.0	34.3	288.7	11.5	5.2	40.1	303.0	13.7	6.2	45.2	312.6	11.3	5.1	50.0	319.2	220		
160	48.8	220	67.1	230	70.1	13.6	219.6	5.8	2.6	20.9	245.6	7.3	3.3	29.4	272.6	9.7	4.4	35.9	290.2	12.3	5.6	41.4	302.0	10.0	4.5	49.7	318.4	230		
160	48.8	220	67.1	236	71.9	0.0	167.8	4.7	2.1																			236		
160	48.8	220	67.1	240	73.2					11.6	211.3	5.7	2.6	23.5	252.5	8.1	3.7	31.2	275.1	10.5	4.8	37.3	289.8	8.8	4.0	42.4	299.1	240		
160	48.8	220	67.1	244	74.4					0.0	167.0	4.9	2.2															244		
160	48.8	220	67.1	250	76.2									15.8	224.5	6.6	3.0	25.7	256.6	8.9	4.0	32.7	275.5	7.7	3.5	38.4	287.4	250		
160	48.8	220	67.1	258	78.6									0.0	164.7	5.2	2.4											258		
160	48.8	220	67.1	260	79.2													18.9	232.3	7.4	3.4	27.6	258.3	6.7	3.0	34.0	273.8	260		
160	48.8	220	67.1	270	82.3													7.3	189.3	5.8	2.6	21.3	236.2	5.8	2.6	29.0	257.5	270		
160	48.8	220	67.1	272	82.9													0.0	161.2	5.5	2.5							272		
160	48.8	220	67.1	280	85.3																12.2	202.9	5.0	2.3	23.1	237.0	3.2	1.5	280	
160	48.8	220	67.1	285	86.9																0.0	156.6	4.6	2.1					285	
160	48.8	220	67.1	290	88.4																					15.2	208.2	2.5	1.1	290
160	48.8	240	73.2	86	26.2	73.0	397.3	32.6	14.8																			86		
160	48.8	240	73.2	90	27.4	72.1	396.2	31.9	14.5																			90		
160	48.8	240	73.2	100	30.5	69.6	392.7	29.7	13.5																			100		
160	48.8	240	73.2	107	32.6					70.0	392.5	29.9	13.6															107		
160	48.8	240	73.2	110	33.5	67.0	388.7	26.8	12.2	69.1	391.3	28.9	13.1														110			
160	48.8	240	73.2	120	36.6	64.4	384.2	24.1	10.9	66.6	387.2	26.1	11.8														120			
160	48.8	240	73.2	130	39.6	61.7	379.1	21.5	9.8	63.9	382.6	23.5	10.7														130			
160	48.8	240	73.2	140	42.7	58.9	373.4	19.0	8.6	61.2	377.4	21.0	9.5	65.0	382.2	24.0	10.9										140			
160	48.8	240	73.2	150	45.7	56.1	367.0	16.7	7.6	58.5	371.6	18.7	8.5	62.3	377.1	21.5	9.8										150			
160	48.8	240	73.2	160	48.8	53.2	359.9	14.5	6.6	55.6	365.1	16.3	7.4	59.5	371.5	19.2	8.7										160			
160	48.8	240	73.2	170	51.8	50.1	352.0	12.4	5.6	52.7	357.9	14.2	6.4	56.7	365.3	17.1	7.8										170			
160	48.8	240	73.2	172	52.4													60.0	369.0	19.2	8.7							172		
160	48.8	240	73.2	180	54.9	47.0	343.2	10.5	4.8	49.6	349.8	12.2	5.5	53.8	358.4	15.1	6.9	57.7	364.1	17.4	7.9					180				
160	48.8	240	73.2	190	57.9	43.6	333.3	8.7	3.9	46.4	340.8	10.3	4.7	50.8	350.6	13.0	5.9	54.8	357.4	15.5	7.0					190				
160	48.8	240	73.2	200	61.0	40.0	322.1	7.0	3.2	43.0	330.7	8.5	3.9	47.6	342.0	11.1	5.0	51.9	349.9	13.7	6.2					200				
160	48.8	240	73.2	203	61.9																55.0	353.1	12.8	5.8			203			
160	48.8	240	73.2	210	64.0	36.1	309.3	5.5	2.5	39.4	319.3	6.9	3.1	44.3	332.4	9.3	4.2	48.8	341.6	11.9	5.4	52.8	347.7	11.6	5.3			210		
160	48.8	240	73.2	220	67.1	31.9	294.5	4.0	1.8	35.5	306.2	5.3	2.4	40.8	321.5	7.7	3.5	45.5	332.4	10.1	4.6	49.8	339.7	10.1	4.6			220		
160	48.8	240	73.2	230	70.1	27.0	276.8	2.6	1.2	31.1	291.0	3.9	1.8	37.0	309.1	6.1	2.8	42.1	321.9	8.4	3.8	46.6	330.7	8.8	4.0			230		
160	48.8	240	73.2	232	70.7																					50.0	334.5	6.4	2.9	232
160	48.8	240	73.2	240	73.2					26.1	272.7	2.5	1.1	32.8	294.7	4.6	2.1	38.4	310.1	6.8	3.1	43.2	320.7	7.6	3.4	47.4	327.4	240		
160	48.8	240	73.2	250	76.2									28.1	277.7	3.2	1.5	34.3	296.5	5.3	2.4	39.6	309.3	6.5	2.9	44.1	317.7	250		
160	48.8	240	73.2	260	79.2													29.8	280.6	3.9	1.8	35.6	296.3	5.5	2.5	40.6	306.7	260		
160	48.8	240	73.2	270	82.3													24.6	261.1	2.6	1.2	31.3	281.2	4.5	2.0	36.7	294.2	270		
160	48.8	240	73.2	280	85.3																26.4	263.1	3.2	1.5					280	
170	51.8	100	30.5	46	14.0	73.0	273.4	126.6	57.4																			46		
170	51.8	100	30.5	50	15.2	70.4	272.0	120.3	54.6																			50		
170	51.8	100	30.5	60	18.3	64.2	267.9	107.0	48.5	70.0	270.9	117.9	53.5														60			
170	51.8	100	30.5	70	21.3	57.7	262.3	97.1	44.1	63.5	266.5	105.5	47.9														70			
170	51.8	100	30.5	80	24.4	50.6	255.1	89.1	40.4	56.9	260.7	94.9	43.1														80			
170	51.8	100	30.5	82	25.0									65.0	265.2	85.5	38.8										82			
170	51.8	100	30.5	90	27.4	42.7	245.6	82.4	37.4	49.7	253.3	81.6	37.0	60.0	261.1	76.9	34.9									90				
170	51.8	100	30.5	100	30.5	33.4	232.9	74.6	33.8	41.7	243.5	71.9	32.6	53.1	254.5	66.8	30.3									100				
170	51.8	100	30.5	104	31.7													60.0	257.4	57.9	26.3						104			
170	51.8	100	30.5	110	33.5	20.8	213.3	65.3	29.6	32.2	230.3	63.3	28.7	45.6	246.0	58.6	26.6	56.2	253.9	53.8	24.4					110				
170	51.8	100	30.5	116	35.4	0.0	177.8	35.4	16.1																		116			
170	51.8	100	30.5	120	36.6					18.9	209.3	56.2	25.5	36.9	234.6	51.9	23.5	49.0	246.3	47.6	21.6						120			
170	51.8	100	30.5	125	38.1					0.0	177.0	38.6	17.5														125			
170	51.8	100	30.5	126	38.4																55.0	247.8	40.5	18.4			126			
170	51.8	100	30.5	130	39.6									25.9	218.2	46.3	21.0	40.9	236.3	42.4	19.2	52.0	244.6	39.9	18.1			130		

LS-348H 5 -- 360 Degree Capacities -- Extended Gage -- Luffing Jib
80" X 95" Luffing Boom, 68" X 80" Luffing Jib, ABC + A Counterweight

Luffing Boom Length (ft)	Luffing Boom Length (m)	Luffing Jib Length (ft)	Luffing Jib Length (m)	Load Radius (ft)	Load Radius (m)	Luffing Boom Angle																								Load Radius (ft)				
						88 Degrees				85 Degrees				80 Degrees				75 Degrees				70 Degrees				65 Degrees								
						Luffing Jib Angle (deg)	Tip Height (ft)	Rated Capacity (kips)	Rated Capacity (mt)	Luffing Jib Angle (deg)	Tip Height (ft)	Rated Capacity (kips)	Rated Capacity (mt)	Luffing Jib Angle (deg)	Tip Height (ft)	Rated Capacity (kips)	Rated Capacity (mt)	Luffing Jib Angle (deg)	Tip Height (ft)	Rated Capacity (kips)	Rated Capacity (mt)	Luffing Jib Angle (deg)	Tip Height (ft)	Rated Capacity (kips)	Rated Capacity (mt)	Luffing Jib Angle (deg)	Tip Height (ft)	Rated Capacity (kips)	Rated Capacity (mt)					
170	51.8	240	73.2	260	79.2										23.6	270.5	2.1	1.0	*	31.1	294.6	4.2	1.9	*	37.0	310.4	4.8	2.2			260			
170	51.8	240	73.2	270	82.3																26.1	276.2	2.8	1.3	*	32.9	296.1	3.9	1.8			270		
170	51.8	240	73.2	280	85.3																				28.1	279.1	3.1	1.4			280			
170	51.8	240	73.2	290	88.4																			22.6	258.0	2.3	1.0	*			290			
180	54.9	100	30.5	46	14.0	73.0	283.4	119.4	54.2	*																					46			
180	54.9	100	30.5	50	15.2	70.7	282.2	114.9	52.1	*																					50			
180	54.9	100	30.5	60	18.3	64.4	278.0	102.7	46.6	*	70.0	280.9	111.2	50.5	*															60				
180	54.9	100	30.5	70	21.3	57.9	272.5	93.2	42.3	*	64.1	276.9	101.7	46.1	*															70				
180	54.9	100	30.5	80	24.4	50.9	265.4	85.6	38.8	*	57.5	271.3	92.1	41.8	*															80				
180	54.9	100	30.5	84	25.6											65.0	275.0	82.1	37.3											84				
180	54.9	100	30.5	90	27.4	43.0	256.0	79.2	35.9	*	50.4	264.0	81.3	36.9	*	61.2	272.0	76.1	34.5										90					
180	54.9	100	30.5	100	30.5	33.8	243.4	73.2	33.2	*	42.5	254.5	71.6	32.5	*	54.4	265.7	65.9	29.9										100					
180	54.9	100	30.5	107	32.6											60.0	267.1	54.8	24.9											107				
180	54.9	100	30.5	110	33.5	21.4	224.2	66.0	29.9	*	33.1	241.6	63.0	28.6	*	47.0	257.5	57.8	26.2		58.0	265.3	52.7	23.9					110					
180	54.9	100	30.5	117	35.7	0.0	187.8	35.8	16.2	*																				117				
180	54.9	100	30.5	120	36.6						20.4	221.7	55.8	25.3	*	38.5	246.6	51.2	23.2		50.9	258.1	46.6	21.1					120					
180	54.9	100	30.5	126	38.4						0.0	187.0	39.1	17.7	*															126				
180	54.9	100	30.5	129	39.3																									129				
180	54.9	100	30.5	130	39.6											28.1	231.4	45.7	20.7		43.1	248.8	41.5	18.8		54.4	256.6	38.6	17.5	130				
180	54.9	100	30.5	140	42.7											10.8	203.0	41.0	18.6		33.9	236.2	38.4	17.4		47.0	248.4	34.6	15.7	140				
180	54.9	100	30.5	142	43.3											0.0	184.4	40.2	18.2											142				
180	54.9	100	30.5	150	45.7																									150				
180	54.9	100	30.5	157	47.9											21.5	217.2	34.6	15.7		38.6	237.6	31.1	14.1		50.0	245.4	27.6	12.5	157				
180	54.9	100	30.5	160	48.8											0.0	180.5	32.1	14.6											160				
180	54.9	100	30.5	170	51.8																					28.1	222.4	28.1	12.7	42.4	236.2	25.0	11.3	160
180	54.9	100	30.5	172	52.4																				10.9	194.2	25.4	11.5	33.0	223.2	22.6	10.3	170	
180	54.9	100	30.5	180	54.9																				0.0	175.3	24.9	11.3				172		
180	54.9	100	30.5	186	56.7																										180			
180	54.9	100	30.5	186	56.7																										186			
180	54.9	120	36.6	52	15.8	73.0	302.6	102.1	46.3	*																				52				
180	54.9	120	36.6	60	18.3	68.9	299.8	95.2	43.2	*																				60				
180	54.9	120	36.6	67	20.4						70.0	299.7	96.4	43.7	*															67				
180	54.9	120	36.6	70	21.3	63.7	295.4	85.9	39.0	*	68.6	298.7	94.2	42.7	*															70				
180	54.9	120	36.6	80	24.4	58.3	289.9	78.4	35.6	*	63.4	294.2	85.4	38.7	*															80				
180	54.9	120	36.6	90	27.4	52.5	282.9	72.5	32.9	*	57.9	288.6	77.7	35.3	*															90				
180	54.9	120	36.6	92	28.0																									92				
180	54.9	120	36.6	100	30.5	46.2	274.3	67.4	30.6	*	52.1	281.6	70.7	32.1	*	65.0	293.1	72.1	32.7										100					
180	54.9	120	36.6	110	33.5	39.1	263.5	61.9	28.1	*	45.7	272.9	62.0	28.1	*	61.0	289.3	64.7	29.4										110					
180	54.9	120	36.6	117	35.7																									117				
180	54.9	120	36.6	120	36.6	30.7	249.2	55.4	25.1	*	38.6	261.8	54.9	24.9	*	60.0	284.4	47.0	21.3										120					
180	54.9	120	36.6	130	39.6	19.5	227.8	50.0	22.7	*	30.2	247.2	49.0	22.2	*	58.3	282.6	45.2	20.5											130				
180	54.9	120	36.6	137	41.8	0.0	187.8	28.3	12.8	*																				137				
180	54.9	120	36.6	140	42.7						18.6	225.2	44.1	20.0	*	42.7	265.7	44.6	20.2											140				
180	54.9	120	36.6	141	43.0											46.2	267.1	37.3	16.9											141				
180	54.9	120	36.6	146	44.5						0.0	187.0	31.1	14.1	*											55.0	273.6	33.1	15.0	146				
180	54.9	120	36.6	150	45.7											25.6	236.2	37.3	16.9											150				
180	54.9	120	36.6	160	48.8											9.8	204.8	33.7	15.3											160				
180	54.9	120	36.6	162	49.4											0.0	184.4	33.1	15.0											162				
180	54.9	120	36.6	163	49.7																									163				
180	54.9	120	36.6	170	51.8																									170				
180	54.9	120	36.6	177	54.0																									177				
180	54.9	120	36.6	180	54.9																									180				
180	54.9	120	36.6	190	57.9																									190				
180	54.9	120	36.6	192	58.5																									192				
180	54.9	120	36.6	200	61.0																									200				
180	54.9	120	36.6	206	62.8																									206				
180	54.9	140	42.7	58	17.7	73.0	321.7	84.6	38.4	*																				58				
180	54.9	140	42.7	60	18.3	72.1	321.0	83.3	37.8	*																				60				
180	54.9	140	42.7	70	21.3	67.7	317.3	76.9	34.9	*																				70				
180	54.9	140	42.7	74	22.6						70.0	318.5	78.9	35.8	*															74				
180	54.9	140	42.7	80	24.4	63.2	312.8	71.9	32.6	*	67.4	316.2	75.8	34.4	*														80					
180	54.9	140	42.7	90	27.4	58.5	307.2	66.6	30.2	*	62.9	311.6	71.0	32.2	*														90					
180	54.9	140	42.7	100	30.5																													

LS-348H 5 -- 360 Degree Capacities -- Retracted Gage -- Luffing Jib
80" X 95" Luffing Boom, 68" X 80" Luffing Jib, ABC + A Counterweight

Luffing Boom Length (ft)		Luffing Boom Length (m)		Luffing Jib Length (ft)		Luffing Jib Length (m)		Load Radius (ft)		Load Radius (m)		Luffing Boom Angle																				Load Radius (ft)									
												88 Degrees				85 Degrees				80 Degrees				75 Degrees				70 Degrees					65 Degrees								
												Luffing Jib Angle (deg)	Tip Height (ft)	Rated Capacity (kips)	Rated Capacity (mt)	Luffing Jib Angle (deg)	Tip Height (ft)	Rated Capacity (kips)	Rated Capacity (mt)	Luffing Jib Angle (deg)	Tip Height (ft)	Rated Capacity (kips)	Rated Capacity (mt)	Luffing Jib Angle (deg)	Tip Height (ft)	Rated Capacity (kips)	Rated Capacity (mt)	Luffing Jib Angle (deg)	Tip Height (ft)	Rated Capacity (kips)	Rated Capacity (mt)		Luffing Jib Angle (deg)	Tip Height (ft)	Rated Capacity (kips)	Rated Capacity (mt)	Luffing Jib Angle (deg)	Tip Height (ft)	Rated Capacity (kips)	Rated Capacity (mt)	
150	45.7	120	36.6	182	55.5																0.0	147.1	20.4	9.3														182			
150	45.7	120	36.6	190	57.9																																			190	
150	45.7	120	36.6	193	58.8																																			193	
150	45.7	140	42.7	57	17.4	73.0	291.7	91.0	41.3	*																													57		
150	45.7	140	42.7	60	18.3	71.6	290.7	88.9	40.3	*																													60		
150	45.7	140	42.7	70	21.3	67.2	286.9	82.6	37.5	*																													70		
150	45.7	140	42.7	72	21.9						70.0	288.6	85.7	38.9	*																								72		
150	45.7	140	42.7	80	24.4	62.7	282.2	75.5	34.3	*	66.3	285.2	80.7	36.6	*																								80		
150	45.7	140	42.7	90	27.4	58.0	276.6	70.0	31.8	*	61.7	280.3	72.4	32.8	*																								90		
150	45.7	140	42.7	96	29.3											65.0	281.7	61.6	27.9																				96		
150	45.7	140	42.7	100	30.5	53.0	269.7	65.4	29.7	*	56.9	274.4	62.7	28.4	*																							100			
150	45.7	140	42.7	110	33.5	47.7	261.4	57.4	26.0	*	51.9	267.2	54.9	24.9	*																								110		
150	45.7	140	42.7	119	36.3											60.0	272.7	41.2	18.7																				119		
150	45.7	140	42.7	120	36.6	41.9	251.4	50.8	23.0	*	46.5	258.6	48.5	22.0	*	53.4	267.2	44.6	20.2																				120		
150	45.7	140	42.7	130	39.6	35.4	238.8	45.3	20.6	*	40.6	248.1	43.2	19.6	*	48.1	259.1	39.6	18.0																				130		
150	45.7	140	42.7	140	42.7	27.5	222.5	40.7	18.5	*	33.8	234.9	39.9	18.1	*	42.4	249.2	36.7	16.7																				140		
150	45.7	140	42.7	142	43.3																																		142		
150	45.7	140	42.7	150	45.7	16.6	197.8	37.8	17.2	*	25.5	217.3	36.0	16.3	*	35.9	236.9	33.0	15.0					55.0	261.8	29.8	13.5											150			
150	45.7	140	42.7	156	47.5	0.0	157.8	21.3	9.7	*														50.8	255.6	27.2	12.3												156		
150	45.7	140	42.7	160	48.8						13.1	188.8	32.6	14.8	*	28.1	220.9	29.9	13.6					45.3	246.6	24.4	11.1											160			
150	45.7	140	42.7	163	49.7						0.0	157.1	23.6	10.7	*																								163		
150	45.7	140	42.7	164	50.0											17.6	197.2	27.1	12.3					30.4	222.3	24.5	11.1												164		
150	45.7	140	42.7	170	51.8										0.0	154.9	25.3	11.5																					170		
150	45.7	140	42.7	177	54.0																																			177	
150	45.7	140	42.7	180	54.9																																			180	
150	45.7	140	42.7	189	57.6																																			189	
150	45.7	140	42.7	190	57.9																																			190	
150	45.7	140	42.7	200	61.0																																			200	
150	45.7	140	42.7	202	61.6																																			202	
150	45.7	140	42.7	210	64.0																																			210	
150	45.7	140	42.7	213	64.9																																			213	
150	45.7	160	48.8	63	19.2	73.0	310.8	74.8	33.9	*																														63	
150	45.7	160	48.8	70	21.3	70.2	308.4	71.1	32.3	*																														70	
150	45.7	160	48.8	78	23.8						70.0	307.4	70.3	31.9	*																									78	
150	45.7	160	48.8	80	24.4	66.4	304.4	66.5	30.2	*	69.4	306.8	69.5	31.5	*																									80	
150	45.7	160	48.8	90	27.4	62.4	299.6	62.3	28.3	*	65.5	302.6	65.0	29.5	*																									90	
150	45.7	160	48.8	100	30.5	58.3	293.9	58.2	26.4	*	61.5	297.6	61.1	27.7	*																									100	
150	45.7	160	48.8	104	31.7											65.0	299.8	53.5	24.3																					104	
150	45.7	160	48.8	110	33.5	53.9	287.2	54.4	24.7	*	57.3	291.7	53.8	24.4	*	62.7	297.0	49.4	22.4																					110	
150	45.7	160	48.8	120	36.6	49.4	279.3	49.8	22.6	*	53.0	284.8	47.4	21.5	*	58.6	291.3	43.4	19.7																				120		
150	45.7	160	48.8	129	39.3																																			129	
150	45.7	160	48.8	130	39.6	44.5	269.9	44.3	20.1	*	48.3	276.6	42.1	19.1	*	54.3	284.7	39.9	18.1																				130		
150	45.7	160	48.8	140	42.7	39.1	258.7	39.7	18.0	*	43.3	266.9	39.0	17.7	*	49.7	276.9	35.7	16.2																					140	
150	45.7	160	48.8	150	45.7	33.0	245.0	37.0	16.8	*	37.8	255.2	35.1	15.9	*	44.8	267.7	32.1	14.6																					150	
150	45.7	160	48.8	153	46.6																																			153	
150	45.7	160	48.8	160	48.8	25.7	227.2	33.5	15.2	*	31.5	240.7	31.8	14.4	*	39.5	256.6	28.9	13.1					46.2	266.9	26.1	11.8												160		
150	45.7	160	48.8	170	51.8	15.5	200.6	30.4	13.8	*	23.8	221.7	28.8	13.1	*	33.5	243.1	26.1	11.8					41.0	256.4	23.5	10.7												170		
150	45.7	160	48.8	176	53.6	0.0	157.9	16.5	7.5	*																														176	
150	45.7	160	48.8	180	54.9						12.2	191.0	26.2	11.9	*	26.3	225.7	23.7	10.8					35.2	243.7	21.2	9.6												180		
150	45.7	160	48.8	184	56.1						0.0	157.1	18.5	8.4	*																									184	
150	45.7	160	48.8	190	57.9																																				190
150	45.7	160	48.8	197	60.0			</																																	

LS-348H 5 -- 360 Degree Capacities -- Retracted Gage -- Luffing Jib
80" X 95" Luffing Boom, 68" X 80" Luffing Jib, ABC + A Counterweight

Luffing Boom Length (ft)	Luffing Boom Length (m)	Luffing Jib Length (ft)	Luffing Jib Length (m)	Load Radius (ft)	Load Radius (m)	Luffing Boom Angle																Load Radius (ft)									
						88 Degrees				85 Degrees				80 Degrees				75 Degrees					70 Degrees				65 Degrees				
						Luffing Jib Angle (deg)	Tip Height (ft)	Rated Capacity (kips)	Rated Capacity (mt)	Luffing Jib Angle (deg)	Tip Height (ft)	Rated Capacity (kips)	Rated Capacity (mt)	Luffing Jib Angle (deg)	Tip Height (ft)	Rated Capacity (kips)	Rated Capacity (mt)	Luffing Jib Angle (deg)	Tip Height (ft)	Rated Capacity (kips)	Rated Capacity (mt)		Luffing Jib Angle (deg)	Tip Height (ft)	Rated Capacity (kips)	Rated Capacity (mt)	Luffing Jib Angle (deg)	Tip Height (ft)	Rated Capacity (kips)	Rated Capacity (mt)	
150	45.7	180	54.9	139	42.4					49.7	294.4	37.4	17.0	54.9	302.1	34.6	15.7	60.0	307.4	31.5	14.3								139		
150	45.7	180	54.9	140	42.7	46.4	288.1	34.7	15.7	45.4	285.2	34.1	15.5	50.9	294.6	31.0	14.1	56.0	300.6	27.9	12.7								140		
150	45.7	180	54.9	150	45.7	41.8	277.8	31.6	14.3	40.8	274.5	30.8	14.0	46.7	285.8	27.9	12.7	52.0	293.4	25.0	11.3								150		
150	45.7	180	54.9	160	48.8	36.8	265.6	28.7	13.0																				160		
150	45.7	180	54.9	165	50.3																								165		
150	45.7	180	54.9	170	51.8	31.1	250.7	26.0	11.8	35.6	261.8	27.9	12.7	42.2	275.6	25.1	11.4	47.9	285.0	22.4	10.2	55.0	294.5	20.9	9.5				170		
150	45.7	180	54.9	180	54.9	24.2	231.6	23.5	10.7	29.7	246.2	25.3	11.5	37.2	263.6	22.7	10.3	43.4	275.2	20.1	9.1	48.8	282.6	17.6	8.0				180		
150	45.7	180	54.9	189	57.6																								189		
150	45.7	180	54.9	190	57.9	14.6	203.2	21.0	9.5	22.5	225.8	23.0	10.4	31.5	248.9	20.6	9.3	38.5	263.7	18.1	8.2	44.5	273.2	15.8	7.2	50.0	279.5	13.6	6.2	189	
150	45.7	180	54.9	196	59.7	0.0	157.9	12.4	5.6																				196		
150	45.7	180	54.9	200	61.0					11.5	193.1	20.7	9.4	24.8	230.2	18.6	8.4	33.1	249.8	16.3	7.4	39.7	262.1	14.1	6.4	45.3	269.6	11.9	5.4	200	
150	45.7	180	54.9	204	62.2					0.0	157.1	14.2	6.4																204		
150	45.7	180	54.9	210	64.0									15.5	202.9	16.9	7.7	26.7	232.4	14.7	6.7	34.4	248.9	12.6	5.7	40.7	258.9	10.5	4.8	210	
150	45.7	180	54.9	217	66.1					0.0	154.9	15.9	7.2																217		
150	45.7	180	54.9	220	67.1													18.4	208.4	13.3	6.0	28.3	232.5	11.2	5.1	35.5	246.1	9.3	4.2	220	
150	45.7	180	54.9	229	69.8													0.0	151.5	12.1	5.5								229		
150	45.7	180	54.9	230	70.1																	20.6	210.5	10.0	4.5	29.6	230.4	8.1	3.7	230	
150	45.7	180	54.9	240	73.2																	7.5	170.6	8.9	4.0	22.3	209.8	7.1	3.2	240	
150	45.7	180	54.9	242	73.8																	0.0	147.2	8.8	4.0					242	
150	45.7	180	54.9	250	76.2																					11.2	176.6	6.2	2.8	250	
150	45.7	180	54.9	253	77.1																	0.0	141.6	5.9	2.7					253	
150	45.7	200	61.0	74	22.6	73.0	349.1	51.5	23.4																					74	
150	45.7	200	61.0	80	24.4	71.3	347.2	49.7	22.5																					80	
150	45.7	200	61.0	90	27.4	68.2	343.6	46.7	21.2																					90	
150	45.7	200	61.0	92	28.0					70.0	345.0	48.0	21.8																	92	
150	45.7	200	61.0	100	30.5	65.1	339.2	43.9	19.9	67.6	341.9	45.6	20.7																	100	
150	45.7	200	61.0	110	33.5	61.9	334.3	39.0	17.7	64.4	337.4	43.0	19.5																	110	
150	45.7	200	61.0	120	36.6	58.6	328.6	35.5	16.1	61.2	332.3	38.1	17.3																	120	
150	45.7	200	61.0	121	36.9					65.0	336.1	40.4	18.3																	121	
150	45.7	200	61.0	130	39.6	55.2	322.0	32.2	14.6	57.9	326.4	34.8	15.8	62.1	331.7	37.8	17.2													130	
150	45.7	200	61.0	140	42.7	51.6	314.6	29.1	13.2	54.4	319.7	31.6	14.3	58.9	326.0	33.5	15.2													140	
150	45.7	200	61.0	149	45.4													60.0	324.7	27.0	12.3									149	
150	45.7	200	61.0	150	45.7	47.9	306.1	26.3	11.9	50.8	312.1	28.6	13.0	55.4	319.5	30.0	13.6	59.7	324.2	26.7	12.1									150	
150	45.7	200	61.0	160	48.8	43.9	296.4	23.7	10.8	47.0	303.4	25.8	11.7	51.9	312.2	26.8	12.2	56.4	318.0	23.8	10.8									160	
150	45.7	200	61.0	170	51.8	39.6	285.2	21.2	9.6	43.0	293.3	23.2	10.5	48.1	303.8	24.1	10.9	52.8	310.9	21.3	9.7									170	
150	45.7	200	61.0	176	53.6																	55.0	310.9	17.2	7.8					176	
150	45.7	200	61.0	180	54.9	34.8	272.0	18.9	8.6	38.6	281.8	19.3	8.8	44.2	294.2	21.7	9.8	49.2	302.8	19.1	8.7	53.7	308.2	16.5	7.5					180	
150	45.7	200	61.0	190	57.9	29.4	256.1	16.8	7.6	33.7	268.1	17.1	7.8	39.9	283.1	19.6	8.9	45.3	293.6	17.1	7.8	50.0	300.4	14.6	6.6					190	
150	45.7	200	61.0	200	61.0	22.9	235.8	14.7	6.7	28.1	251.4	16.5	7.5	35.2	270.1	17.6	8.0	41.1	282.9	15.3	6.9	46.2	291.4	13.0	5.9					200	
150	45.7	200	61.0	202	61.6																									202	
150	45.7	200	61.0	210	64.0	13.9	205.7	12.8	5.8	21.3	229.6	14.5	6.6	29.9	254.4	15.9	7.2	36.5	270.4	13.7	6.2	42.1	281.1	11.5	5.2	50.0	294.8	10.4	4.7	210	
150	45.7	200	61.0	216	65.8	0.0	157.9	8.8	4.0																					216	
150	45.7	200	61.0	220	67.1					11.0	195.0	12.5	5.7	23.5	234.5	14.4	6.5	31.4	255.6	12.2	5.5	37.6	269.1	10.1	4.6	42.9	277.7	8.1	3.7	220	
150	45.7	200	61.0	224	68.3					0.0	157.1	10.5	4.8																	224	
150	45.7	200	61.0	230	70.1									14.7	205.6	13.0	5.9	25.3	237.0	10.9	4.9	32.6	254.9	8.9	4.0	38.5	266.1	7.0	3.2	230	
150	45.7	200	61.0	237	72.2					0.0	154.9	12.0	5.4																	237	
150	45.7	200	61.0	240	73.2													17.5	211.5	9.8	4.4	26.8	237.4	7.8	3.5	33.6	252.3	6.0	2.7	240	
150	45.7	200	61.0	249	75.9													0.0	151.5	8.8	4.0									249	
150	45.7	200	61.0	250	76.2																	19.6	214.0	6.8	3.1	28.0	235.5	5.0	2.3	250	
150	45.7	200	61.0	260	79.2																	7.1	171.9	5.9	2.7	21.1	213.7	4.2	1.9	260	
150	45.7	200	61.0	262	79.9																	0.0	147.2	5.8	2.6					262	
150	45.7	200	61.0	270	82.3																					10.6	178.5	3.4	1.5	270	
150	45.7	200	61.0	273	83.2																	0.0	141.6	3.2	1.5					273	
150	45.7	220	67.1	80	24.4	73.0	368.2	42.3	19.2																					80	
150	45.7	220	67.1	90	27.4	70.3	364.9	39.8	18.1																						90
150	45.7	220	67.1	99	30.2					70.0	363.8	38.5	17.5																		99
150	45.7	220	67.1	100	30.5	67.5	361.1	36.0	16.3	69.7	363.4	38.2	17.3																	100	
150	45.7	220	67.1	110	33.5	64																									

LS-348H 5 -- 360 Degree Capacities -- Retracted Gage -- Luffing Jib
 80" X 95" Luffing Boom, 68" X 80" Luffing Jib, ABC + A Counterweight

Luffing Boom Length (ft)	Luffing Boom Length (m)	Luffing Jib Length (ft)	Luffing Jib Length (m)	Load Radius (ft)	Load Radius (m)	Luffing Boom Angle																				Load Radius (ft)				
						88 Degrees				85 Degrees				80 Degrees				75 Degrees				70 Degrees					65 Degrees			
						Luffing Jib Angle (deg)	Tip Height (ft)	Rated Capacity (kips)	Rated Capacity (mt)	Luffing Jib Angle (deg)	Tip Height (ft)	Rated Capacity (kips)	Rated Capacity (mt)	Luffing Jib Angle (deg)	Tip Height (ft)	Rated Capacity (kips)	Rated Capacity (mt)	Luffing Jib Angle (deg)	Tip Height (ft)	Rated Capacity (kips)	Rated Capacity (mt)	Luffing Jib Angle (deg)	Tip Height (ft)	Rated Capacity (kips)	Rated Capacity (mt)		Luffing Jib Angle (deg)	Tip Height (ft)	Rated Capacity (kips)	Rated Capacity (mt)
180	54.9	240	73.2	230	70.1	27.4	298.1	2.5	1.1	31.9	313.8	3.9	1.8	38.3	333.3	6.4	2.9	43.9	346.8	6.9	3.1	48.8	355.8	4.2	1.9	230				
180	54.9	240	73.2	240	73.2					27.1	296.1	2.6	1.2	34.3	319.7	4.9	2.2	40.3	335.7	5.8	2.6	45.5	346.5	3.2	1.5	240				
180	54.9	240	73.2	250	76.2									29.8	303.7	3.5	1.6	36.5	323.1	4.8	2.2	42.1	336.0	2.3	1.0	250				
180	54.9	240	73.2	260	79.2									24.6	284.2	2.2	1.0	32.2	308.5	3.8	1.7					260				
180	54.9	240	73.2	270	82.3													27.4	291.0	3.0	1.4					270				
190	57.9	100	30.5	46	14.0	73.0	293.4	112.7	51.1																	46				
190	57.9	100	30.5	50	15.2	70.9	292.3	109.0	49.5																	50				
190	57.9	100	30.5	60	18.3	64.7	288.2	98.3	44.6																	60				
190	57.9	100	30.5	61	18.6					70.0	290.9	104.9	47.6													61				
190	57.9	100	30.5	70	21.3	58.1	282.7	89.4	40.6	64.6	287.2	96.9	44.0													70				
190	57.9	100	30.5	80	24.4	51.1	275.6	82.2	37.3	58.1	281.8	83.7	38.0													80				
190	57.9	100	30.5	86	26.2									65.0	284.9	70.3	31.9									86				
190	57.9	100	30.5	90	27.4	43.3	266.4	76.1	34.5	51.0	274.7	72.8	33.0	62.3	282.7	65.9	29.9									90				
190	57.9	100	30.5	100	30.5	34.1	253.9	66.8	30.3	43.2	265.4	63.1	28.6	55.6	276.7	57.0	25.9									100				
190	57.9	100	30.5	110	33.5	21.9	235.1	58.6	26.6	34.0	252.9	55.3	25.1	48.3	268.9	49.8	22.6	60.0	276.7	44.7	20.3					110				
190	57.9	100	30.5	117	35.7	0.0	197.8	36.2	16.4																		117			
190	57.9	100	30.5	120	36.6					21.8	234.0	49.0	22.2	40.1	258.6	44.0	20.0	52.8	269.8	40.0	18.1					120				
190	57.9	100	30.5	127	38.7					0.0	196.9	39.4	17.9														127			
190	57.9	100	30.5	130	39.6									30.1	244.4	40.1	18.2	45.2	261.1	36.0	16.3					130				
190	57.9	100	30.5	133	40.5																	55.0	266.6	30.7	13.9	133				
190	57.9	100	30.5	140	42.7									15.2	220.4	36.2	16.4	36.5	249.6	32.2	14.6	49.6	260.9	28.2	12.8	140				
190	57.9	100	30.5	144	43.9									0.0	194.2	34.7	15.7									144				
190	57.9	100	30.5	150	45.7													25.3	232.8	28.9	13.1	41.6	251.1	25.2	11.4	150				
190	57.9	100	30.5	155	47.2																	50.0	254.5	20.5	9.3	155				
190	57.9	100	30.5	160	48.8													0.0	190.2	26.0	11.8	32.0	237.7	22.6	10.3	160				
190	57.9	100	30.5	170	51.8																	18.6	216.6	20.3	9.2	170				
190	57.9	100	30.5	175	53.3																	0.0	184.7	19.1	8.7	175				
190	57.9	100	30.5	180	54.9																					180				
190	57.9	100	30.5	190	57.9																					190				
190	57.9	120	36.6	52	15.8	73.0	312.6	98.0	44.5																	52				
190	57.9	120	36.6	60	18.3	69.1	309.9	91.0	41.3																	60				
190	57.9	120	36.6	68	20.7					70.0	309.7	91.1	41.3													68				
190	57.9	120	36.6	70	21.3	63.9	305.6	82.2	37.3	69.1	309.0	89.7	40.7													70				
190	57.9	120	36.6	80	24.4	58.5	300.1	75.2	34.1	63.9	304.6	82.2	37.3													80				
190	57.9	120	36.6	90	27.4	52.7	293.2	69.6	31.6	58.4	299.1	71.7	32.5													90				
190	57.9	120	36.6	94	28.7									65.0	303.0	60.6	27.5									94				
190	57.9	120	36.6	100	30.5	46.4	284.7	64.8	29.4	52.6	292.2	62.0	28.1	61.9	300.1	55.7	25.3									100				
190	57.9	120	36.6	110	33.5	39.4	273.9	57.7	26.2	46.3	283.7	54.3	24.6	56.3	294.1	48.6	22.1									110				
190	57.9	120	36.6	120	36.6	31.1	259.7	51.1	23.2	39.3	272.9	48.0	21.8	50.4	286.7	42.8	19.4	60.0	294.1	39.5	17.9					120				
190	57.9	120	36.6	130	39.6	20.0	238.8	45.6	20.7	31.0	258.7	42.8	19.4	43.9	277.4	39.5	17.9	54.1	287.3	34.9	15.8					130				
190	57.9	120	36.6	137	41.8	0.0	197.8	28.6	13.0																		137			
190	57.9	120	36.6	140	42.7					19.8	237.6	39.5	17.9	36.5	265.5	35.3	16.0	47.9	279.2	31.1	14.1					140				
190	57.9	120	36.6	144	43.9																	55.0	283.0	25.7	11.7	144				
190	57.9	120	36.6	147	44.8					0.0	196.9	31.4	14.2													147				
190	57.9	120	36.6	150	45.7									27.4	249.5	31.8	14.4	41.1	269.0	27.9	12.7	51.5	278.5	24.0	10.9	150				
190	57.9	120	36.6	160	48.8					13.9	223.0	28.6	13.0	33.2	255.8	25.1	11.4	33.2	255.8	25.1	11.4	45.1	269.6	21.5	9.8	160				
190	57.9	120	36.6	164	50.0					0.0	194.2	27.5	12.5													164				
190	57.9	120	36.6	168	51.2																					168				
190	57.9	120	36.6	170	51.8													23.0	237.1	22.6	10.3	37.8	258.3	19.3	8.8	170				
190	57.9	120	36.6	180	54.9					0.0	190.2	20.4	9.3					0.0	190.2	20.4	9.3	29.2	243.2	17.3	7.8	180				
190	57.9	120	36.6	190	57.9													17.0	219.7	15.5	7.0	33.9	244.7	12.7	5.8	190				
190	57.9	120	36.6	195	59.4													0.0	184.7	14.6	6.6					195				
190	57.9	120	36.6	200	61.0																					200				
190	57.9	120	36.6	210	64.0																	24.0	226.6	11.2	5.1	210				
190	57.9	140	42.7	58	17.7	73.0	331.7	82.5	37.4																	58				
190	57.9	140	42.7	60	18.3	72.2	331.1	81.4	36.9																	60				
190	57.9	140	42.7	70	21.3	67.9	327.5	75.4	34.2																	70				
190	57.9	140	42.7	75	22.9					70.0	328.4	77.0	34.9													75				
190	57.9	140	42.7	80	24.4	63.4	322.9	69.1	31.4	67.8	326.5	74.5	33.8													80				
190	57.9	140	42.7	90	27.4	58.7	317.4	63.8	28.9	63.3	322.0	69.3	31.4													90				
190	57.9	140	42.7	100	30.5	53.8	310.7	59.2	26.9	58.6	316.4	60.9	27.6													100				
190	57.9	140	42.7	103	31.4									65.0	321.1	52.4	23.8									103				
190	57.9	140	42.7	110	33.5	48.5	302.6	54.1	24.5	53.7	309.7	53.2	24.1	61.6	317.4	47.4	21.5									110				
190	57.9	140	42.7	120	36.6	42.8	292.9	48.8	22.1	48.4	301.7	46.9	21.3	56.9	311.5	41.6	18.9									120				
190	57.9	140	42.7	130	39.6	36.3	280.7	44.0	20.0	42.7	291.8	41.7	18.9	51.8	304.3	38.4	17.4													

LS-348H 5 -- 360 Degree Capacities -- Retracted Gage -- Luffing Jib
80" X 95" Luffing Boom, 68" X 80" Luffing Jib, ABC + A Counterweight

Luffing Boom Length (ft)	Luffing Boom Length (m)	Luffing Jib Length (ft)	Luffing Jib Length (m)	Load Radius (ft)	Load Radius (m)	Luffing Boom Angle																Load Radius (ft)														
						88 Degrees				85 Degrees				80 Degrees				75 Degrees					70 Degrees				65 Degrees									
						Luffing Jib Angle (deg)	Tip Height (ft)	Rated Capacity (kips)	Rated Capacity (mt)	Luffing Jib Angle (deg)	Tip Height (ft)	Rated Capacity (kips)	Rated Capacity (mt)	Luffing Jib Angle (deg)	Tip Height (ft)	Rated Capacity (kips)	Rated Capacity (mt)	Luffing Jib Angle (deg)	Tip Height (ft)	Rated Capacity (kips)	Rated Capacity (mt)		Luffing Jib Angle (deg)	Tip Height (ft)	Rated Capacity (kips)	Rated Capacity (mt)	Luffing Jib Angle (deg)	Tip Height (ft)	Rated Capacity (kips)	Rated Capacity (mt)						
190	57.9	140	42.7	160	48.8					18.4	241.0	31.5	14.3		33.7	271.9	27.7	12.6		44.2	287.7	24.0	10.9		52.7	296.1	20.2	9.2						160		
190	57.9	140	42.7	167	50.9					0.0	196.9	25.0	11.3																						167	
190	57.9	140	42.7	170	51.8									25.4	254.2	25.1	11.4		37.9	276.2	21.5	9.8		47.4	287.7	18.1	8.2						170			
190	57.9	140	42.7	180	54.9									12.8	225.3	22.7	10.3		30.7	261.5	19.4	8.8		41.5	277.5	16.1	7.3	50.0	285.1	12.9	5.9			180		
190	57.9	140	42.7	184	56.1									0.0	194.3	21.8	9.9																	184		
190	57.9	140	42.7	190	57.9														21.3	241.0	17.5	7.9		34.9	264.8	14.4	6.5	44.6	276.2	11.4	5.2			190		
190	57.9	140	42.7	200	61.0									0.0	190.2	15.8	7.2							27.0	248.2	12.9	5.9	38.4	264.9	10.1	4.6			200		
190	57.9	140	42.7	210	64.0																			15.7	222.6	11.5	5.2	31.3	250.5	8.8	4.0			210		
190	57.9	140	42.7	215	65.5																			0.0	184.7	10.7	4.9							215		
190	57.9	140	42.7	220	67.1																													220		
190	57.9	140	42.7	230	70.1																													230		
190	57.9	160	48.8	64	19.5	73.0	350.8	68.0	30.9	*																								64		
190	57.9	160	48.8	70	21.3	70.7	348.8	65.4	29.7	*																								70		
190	57.9	160	48.8	80	24.4	66.9	345.0	61.4	27.9	*																								80		
190	57.9	160	48.8	82	25.0						70.0	347.2	64.0	29.0	*																			82		
190	57.9	160	48.8	90	27.4	62.9	340.3	57.6	26.1	*	66.9	344.0	60.8	27.6	*																			90		
190	57.9	160	48.8	100	30.5	58.8	334.7	53.4	24.2	*	62.9	339.3	57.1	25.9	*																			100		
190	57.9	160	48.8	110	33.5	54.6	328.2	48.7	22.1	*	58.8	333.8	52.1	23.6	*																			110		
190	57.9	160	48.8	111	33.8														65.0	339.2	45.4	20.6												111		
190	57.9	160	48.8	120	36.6	50.0	320.4	44.3	20.1	*	54.5	327.2	45.8	20.8	*	61.4	334.7	40.4	18.3															120		
190	57.9	160	48.8	130	39.6	45.2	311.3	40.2	18.2	*	50.0	319.4	40.6	18.4	*	57.3	328.8	37.3	16.9															130		
190	57.9	160	48.8	140	42.7	39.9	300.4	37.1	16.8	*	45.1	310.3	37.8	17.2	*	52.9	321.8	33.2	15.1	60.0	328.7	28.9	13.1											140		
190	57.9	160	48.8	150	45.7	33.9	287.1	33.8	15.3	*	39.8	299.4	34.0	15.4	*	48.3	313.6	29.7	13.5	55.6	322.1	25.6	11.6											150		
190	57.9	160	48.8	160	48.8	26.8	270.0	30.8	14.0	*	33.9	286.0	30.7	13.9	*	43.3	303.9	26.7	12.1	51.1	314.7	22.8	10.3											160		
190	57.9	160	48.8	167	50.9																			55.0	315.7	17.5	7.9								167	
190	57.9	160	48.8	170	51.8	17.3	245.3	28.3	12.8	*	26.8	268.9	27.8	12.6	*	37.8	292.2	24.1	10.9	46.4	305.9	20.4	9.3	53.7	313.6	16.8	7.6							170		
190	57.9	160	48.8	177	54.0	0.0	197.9	17.6	8.0	*																									177	
190	57.9	160	48.8	180	54.9						17.2	244.1	25.2	11.4	*	31.4	277.7	21.7	9.8	41.2	295.5	18.3	8.3	49.1	305.6	14.9	6.8							180		
190	57.9	160	48.8	187	57.0						0.0	196.9	19.8	9.0	*																				187	
190	57.9	160	48.8	190	57.9											23.7	258.5	19.6	8.9	35.4	282.8	16.4	7.4	44.2	296.1	13.3	6.0							190		
190	57.9	160	48.8	193	58.8																														193	
190	57.9	160	48.8	200	61.0									12.0	227.5	17.8	8.1		28.6	266.8	14.7	6.7	38.8	284.8	11.7	5.3	50.0	300.4	9.7	4.4			200			
190	57.9	160	48.8	204	62.2									0.0	194.3	17.1	7.8																		204	
190	57.9	160	48.8	210	64.0																														210	
190	57.9	160	48.8	220	67.1																			0.0	190.2	11.9	5.4	32.6	270.9	10.4	4.7	41.6	284.1	7.6	3.4	210
190	57.9	160	48.8	230	70.1																			25.2	252.8	9.1	4.1	35.9	271.6	6.5	2.9	35.9	271.6	6.5	2.9	220
190	57.9	160	48.8	235	71.6																														235	
190	57.9	160	48.8	240	73.2																			0.0	184.7	7.5	3.4								240	
190	57.9	160	48.8	250	76.2																														250	
190	57.9	180	54.9	70	21.3	73.0	369.9	56.4	25.6	*																									70	
190	57.9	180	54.9	80	24.4	69.6	366.5	53.0	24.0	*																									80	
190	57.9	180	54.9	89	27.1						70.0	366.0	52.9	24.0	*																				89	
190	57.9	180	54.9	90	27.4	66.2	362.4	49.9	22.6	*	69.6	365.6	52.4	23.8	*																				90	
190	57.9	180	54.9	100	30.5	62.6	357.6	46.4	21.1	*	66.1	361.5	49.4	22.4	*																				100	
190	57.9	180	54.9	110	33.5	59.0	352.0	42.8	19.4	*	62.6	356.7	46.5	21.1	*																				110	
190	57.9	180	54.9	120	36.6	55.2	345.6	39.3	17.8	*	58.9	351.1	43.9	19.9	*	65.0	357.4	39.3	17.8																120	
190	57.9	180	54.9	130	39.6	51.2	338.1	36.6	16.6	*	55.1	344.6	39.5	17.9	*	61.3	352.1	36.2	16.4																130	
190	57.9	180	54.9	140	42.7	47.0	329.4	33.5	15.2	*	51.2	337.1	36.8	16.7	*	57.6	346.2	32.1	14.6																140	
190	57.9	180	54.9	150	45.7	42.5	319.3	30.6	13.9	*	47.0	328.4	33.0	15.0	*	53.7	339.3	28.6	13.0	60.0	346.0	24.5	11.1											150		
190	57.9	180	54.9	160	48.8	37.5	307.4	27.9	12.7	*	42.4	318.3	29.7	13.5	*	49.7	331.4	25.6	11.6	56.1	339.5	21.6	9.8											160		
190	57.9	180	54.9	170	51.8	31.9	293.0	25.4	11.5	*	37.5	306.4	26.8	12.2	*	45.3	322.3	23.0	10.4	52.2	332.3	19.3	8.8											170		
190	57.9	180	54.9	178	54.3																			55.0	332.1	14.0	6.4								178	
190	57.9	180	54.9	180	54.9	25.3	274.6	23.0	10.4	*	31.9	291.9	24.3	11.0	*	40.7	311.6	20.7	9.4	48.0	323.9	17.2	7.8	54.4	331.0	13.7	6.2							180		
190	57.9	180																																		

LS-348H 5 -- 360 Degree Capacities -- Retracted Gage -- Luffing Jib
80" X 95" Luffing Boom, 68" X 80" Luffing Jib, ABC + A Counterweight

Luffing Boom Length (ft)	Luffing Boom Length (m)	Luffing Jib Length (ft)	Luffing Jib Length (m)	Load Radius (ft)	Load Radius (m)	Luffing Boom Angle																				Load Radius (ft)										
						88 Degrees				85 Degrees				80 Degrees				75 Degrees				70 Degrees					65 Degrees									
						Luffing Jib Angle (deg)	Tip Height (ft)	Rated Capacity (kips)	Rated Capacity (mt)	Luffing Jib Angle (deg)	Tip Height (ft)	Rated Capacity (kips)	Rated Capacity (mt)	Luffing Jib Angle (deg)	Tip Height (ft)	Rated Capacity (kips)	Rated Capacity (mt)	Luffing Jib Angle (deg)	Tip Height (ft)	Rated Capacity (kips)	Rated Capacity (mt)	Luffing Jib Angle (deg)	Tip Height (ft)	Rated Capacity (kips)	Rated Capacity (mt)		Luffing Jib Angle (deg)	Tip Height (ft)	Rated Capacity (kips)	Rated Capacity (mt)	Luffing Jib Angle (deg)	Tip Height (ft)	Rated Capacity (kips)	Rated Capacity (mt)		
190	57.9	200	61.0	100	30.5	65.5	379.9	39.3	17.8	*	68.6	383.1	42.3	19.2	*																			100		
190	57.9	200	61.0	110	33.5	62.4	375.0	37.3	16.9	*	65.5	378.9	39.9	18.1	*																			110		
190	57.9	200	61.0	120	36.6	59.1	369.4	32.4	14.7	*	62.3	374.0	37.1	16.8	*																			120		
190	57.9	200	61.0	128	39.0											65.0	375.5	35.9	16.3																128	
190	57.9	200	61.0	130	39.6	55.7	363.0	31.0	14.1	*	59.0	368.4	34.1	15.5	*	64.4	374.5	35.0	15.9															130		
190	57.9	200	61.0	140	42.7	52.1	355.7	28.2	12.8	*	55.6	362.0	31.0	14.1	*	61.1	369.4	31.0	14.1																140	
190	57.9	200	61.0	150	45.7	48.4	347.4	25.5	11.6	*	52.1	354.7	28.2	12.8	*	57.8	363.5	27.5	12.5																150	
190	57.9	200	61.0	160	48.8	44.4	337.8	23.0	10.4	*	48.4	346.4	25.5	11.6	*	54.4	356.8	24.5	11.1	60.0	363.3	20.6	9.3												160	
190	57.9	200	61.0	170	51.8	40.2	326.9	20.6	9.3	*	44.4	336.8	23.1	10.5	*	50.8	349.1	21.9	9.9	56.5	356.9	18.1	8.2												170	
190	57.9	200	61.0	180	54.9	35.5	314.0	18.4	8.3	*	40.2	325.8	20.7	9.4	*	47.0	340.4	19.6	8.9	53.0	349.8	16.0	7.3												180	
190	57.9	200	61.0	190	57.9	30.2	298.5	16.4	7.4	*	35.5	313.0	18.6	8.4	*	42.9	330.4	17.6	8.0	49.3	341.8	14.2	6.4	55.0	348.5	10.8	4.9								190	
190	57.9	200	61.0	200	61.0	23.9	279.0	14.4	6.5	*	30.2	297.5	16.5	7.5	*	38.5	318.7	15.7	7.1	45.4	332.5	12.5	5.7	51.4	341.0	9.3	4.2								200	
190	57.9	200	61.0	210	64.0	15.4	251.1	12.5	5.7	*	23.9	277.9	14.5	6.6	*	33.6	305.0	14.1	6.4	41.2	321.9	11.0	5.0	47.6	332.4	8.0	3.6								210	
190	57.9	200	61.0	217	66.1	0.0	197.8	9.8	4.4	*																									217	
190	57.9	200	61.0	219	66.8																															219
190	57.9	200	61.0	220	67.1						15.3	249.8	12.7	5.8	*	28.1	288.3	12.6	5.7	36.7	309.6	9.7	4.4	43.6	322.7	6.8	3.1	50.0	331.1	4.2	1.9			219		
190	57.9	200	61.0	227	69.2						0.0	196.9	11.2	5.1	*																				220	
190	57.9	200	61.0	230	70.1											21.2	266.4	11.3	5.1	31.6	294.8	8.5	3.9	39.3	311.3	5.7	2.6	45.7	321.0	3.1	1.4			227		
190	57.9	200	61.0	240	73.2											10.7	231.5	10.1	4.6	25.6	276.4	7.4	3.4	34.5	298.0	4.7	2.1	41.6	310.5	2.2	1.0			230		
190	57.9	200	61.0	244	74.4											0.0	194.3	9.7	4.4																240	
190	57.9	200	61.0	250	76.2															17.8	251.3	6.4	2.9	29.1	281.9	3.8	1.7							244		
190	57.9	200	61.0	260	79.2														0.0	190.2	5.5	2.5					22.5	261.2	3.0	1.4					250	
190	57.9	200	61.0	270	82.3																					13.1	230.1	2.3	1.0						260	
200	61.0	100	30.5	47	14.3	73.0	303.4	106.0	48.1	*																									47	
200	61.0	100	30.5	50	15.2	71.1	302.4	102.9	46.7	*																										50
200	61.0	100	30.5	60	18.3	64.9	298.3	94.0	42.6	*																										60
200	61.0	100	30.5	62	18.9						70.0	300.8	98.6	44.7	*																					62
200	61.0	100	30.5	70	21.3	58.4	292.9	85.5	38.8	*	65.2	297.6	92.1	41.8	*																					70
200	61.0	100	30.5	80	24.4	51.4	285.9	78.5	35.6	*	58.7	292.3	83.2	37.7	*																					80
200	61.0	100	30.5	88	26.8											65.0	294.7	67.4	30.6																	88
200	61.0	100	30.5	90	27.4	43.6	276.7	72.9	33.1	*	51.7	285.3	72.3	32.8	*	63.4	293.5	64.8	29.4																90	
200	61.0	100	30.5	100	30.5	34.5	264.4	66.6	30.2	*	43.9	276.2	62.6	28.4	*	56.8	287.7	56.1	25.5																	100
200	61.0	100	30.5	110	33.5	22.4	246.0	58.4	26.5	*	34.9	264.1	54.9	24.9	*	49.6	280.3	49.0	22.2																	110
200	61.0	100	30.5	112	34.1															60.0	286.4	41.9	19.0													112
200	61.0	100	30.5	118	36.0	0.0	207.8	36.5	16.6	*																										118
200	61.0	100	30.5	120	36.6						23.1	246.0	48.6	22.1	*	41.6	270.5	43.2	19.6	54.7	281.4	39.4	17.9												120	
200	61.0	100	30.5	128	39.0						0.0	206.9	39.8	18.1	*																					128
200	61.0	100	30.5	130	39.6											32.0	257.1	39.8	18.1	47.3	273.3	35.0	15.9												130	
200	61.0	100	30.5	136	41.5																															136
200	61.0	100	30.5	140	42.7											18.6	236.0	35.6	16.2	38.9	262.6	31.3	14.2	55.0	276.0	28.2	12.8								140	
200	61.0	100	30.5	145	44.2											0.0	204.1	33.5	15.2																	145
200	61.0	100	30.5	150	45.7															28.5	247.6	28.0	12.7	44.5	264.1	24.1	10.9								150	
200	61.0	100	30.5	159	48.5																															159
200	61.0	100	30.5	160	48.8															11.9	220.5	25.2	11.4	35.6	252.2	21.5	9.8	50.0	263.5	18.2	8.3			160		
200	61.0	100	30.5	162	49.4															0.0	199.8	24.5	11.1					49.1	262.5	17.9	8.1				162	
200	61.0	100	30.5	170	51.8																															170
200	61.0	100	30.5	179	54.6															24.0	234.7	19.3	8.8	41.0	252.6	16.0	7.3	41.0	252.6	16.0	7.3			179		
200	61.0	100	30.5	180	54.9															0.0	194.1	17.4	7.9					31.3	238.9	14.2	6.4			180		
200	61.0	100	30.5	190	57.9																								17.4	216.8	12.6	5.7			190	
200	61.0	100	30.5	195	59.4																								0.0	187.0	11.8	5.4			195	
200	61.0	120	36.6	53	16.2	73.0	322.6	92.3	41.9	*																										53
200	61.0	120	36.6	60	18.3	69.3	320.0	86.8	39.4	*																										60
200	61.0	120	36.6	69	21.0						70.0	319.6	85.7	38.9	*		</																			

Link-Belt Construction Equipment Company Lexington, Kentucky www.linkbelt.com

®Link-Belt is a registered trademark. Copyright 2007. We are constantly improving our products and therefore reserve the right to change designs and specifications.