

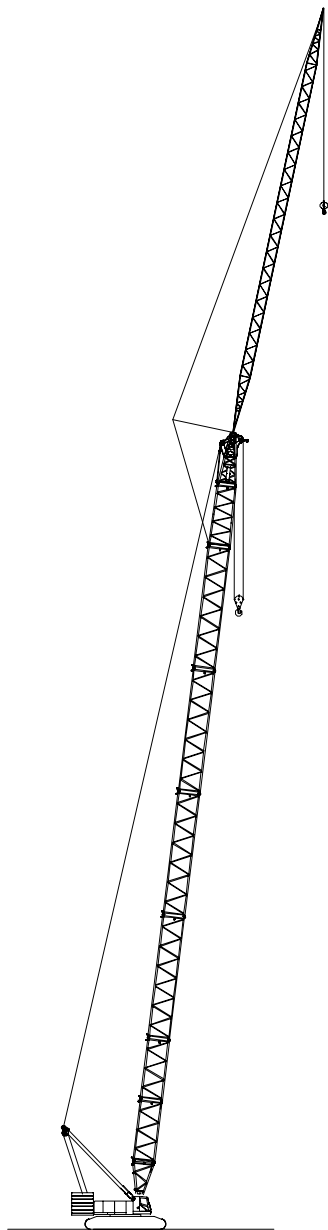
# Technical Data

## Jib Capacities

# 348

HYLAB5

Main Boom + Jib



CAUTION: This material is supplied for reference use only. Operator must refer to in-cab Crane Rating Manual and Operator's Manual to determine allowable crane lifting capacities and assembly and operating procedures.



# Table Of Contents

Jib Make-Up With Heavy Duty Boom .....	1
Working Range Diagram With Heavy Duty Boom – Extended Gauge .....	2
Load Chart With Heavy Duty Boom – Extended Gauge .....	3
Jib Make-Up With Long Range Boom .....	15
Working Range Diagram With Long Range Boom – Extended Gauge .....	16
Load Chart With Long Range Boom – Extended Gauge .....	17



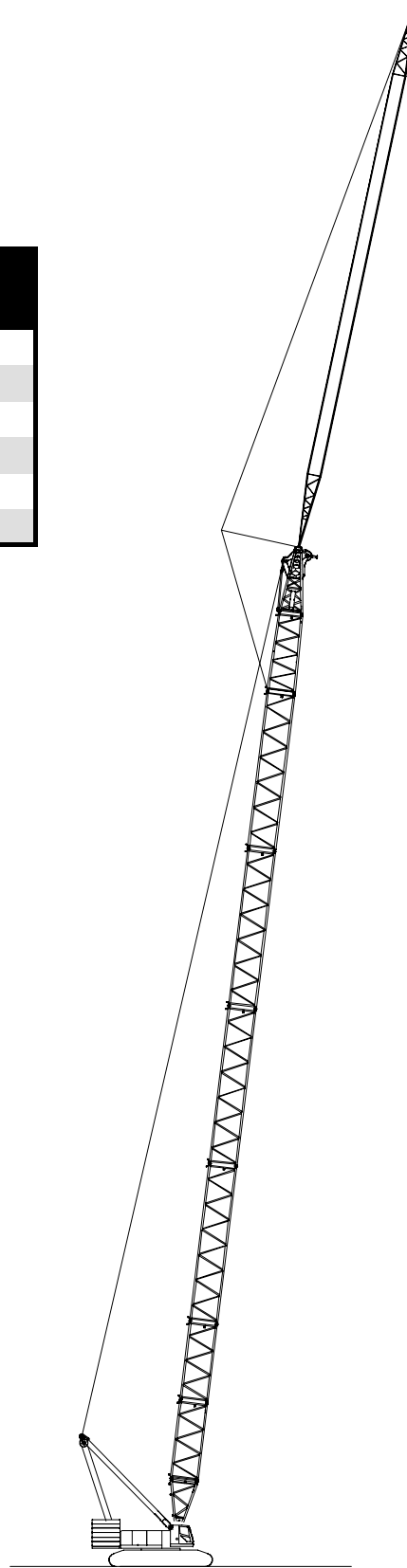
# Jib Attachment

## Jib Make-Up With Heavy Duty Boom

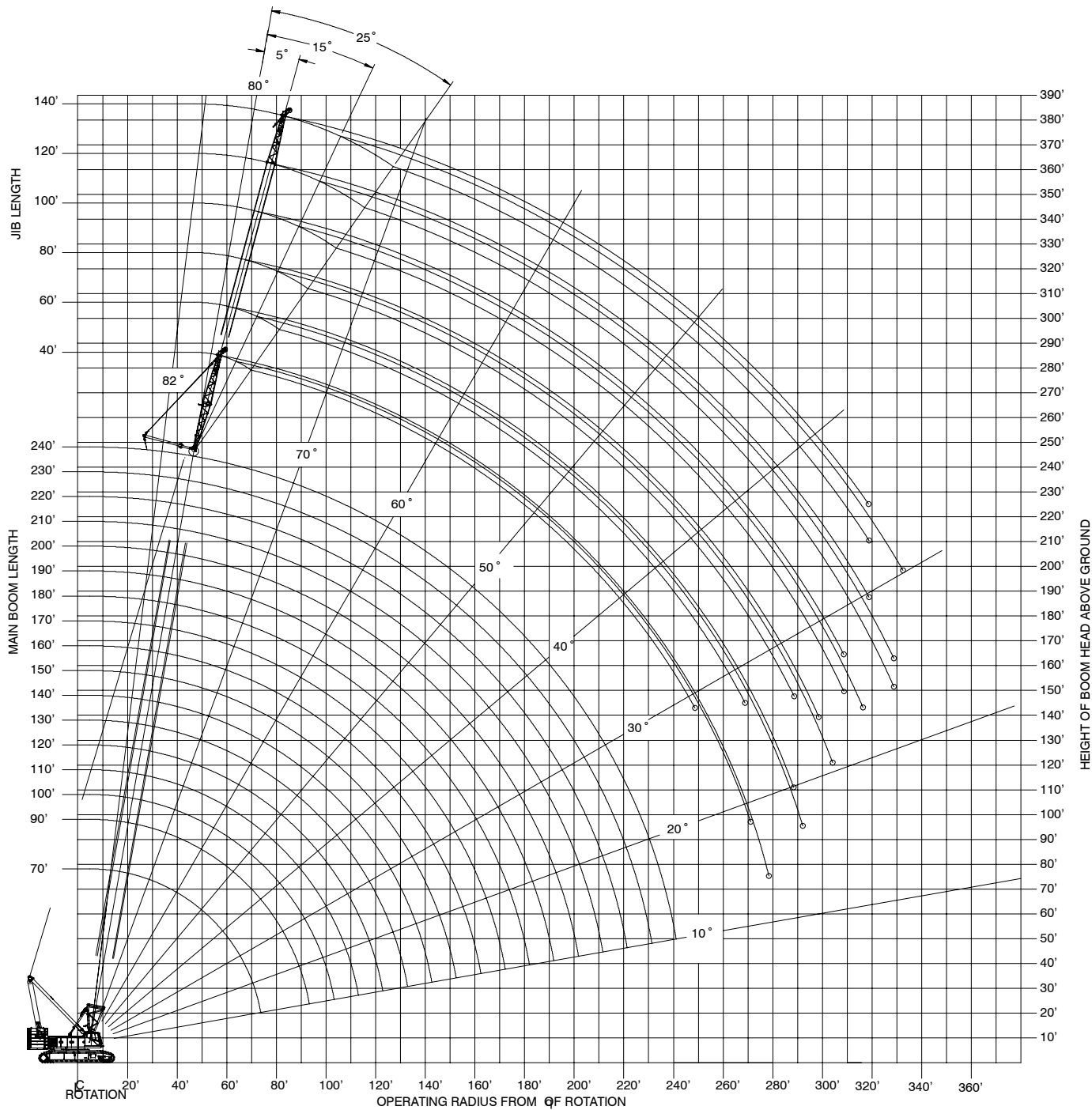
Jib Length ft (m)	20 ft (6.10m) "K" Jib Base	20 ft (6.10m) "EF" Jib Extensions	20 ft (6.10m) "E" Jib Top
40 (12.19)	1		1
60 (18.29)	1	1	1
80 (24.38)	1	2	1
100 (30.48)	1	3	1
120 (36.58)	1	4	1
140 (42.67)	1	5	1

### Notes:

- Capacities shown are in kips/metric tons (1 kip = 1,000 lb / 1 metric ton = 0.45 kips) and are not more than 75% of the tipping loads with the crane standing level on a firm supporting surface.
- A deduction must be made from these capacities for the weight of the main boom hook block or hook ball, jib hook block or hook ball, slings, grapples, load weighing devices, etc. When using main hook while jib is attached, reduce capacities by values shown in Crane Rating Manual. See Operator's Manual for all limitations when raising or lowering attachment.
- The capacities in the shaded areas are based on structural strength. The capacities in the non-shaded areas are based on stability ratings.
- Load ratings are based on freely suspended loads and make no allowances for such factors as the effect of the wind, ground conditions, and operating speeds. The operator shall therefore reduce load ratings in order to take these conditions into account. Refer to the Crane Rating Manual for Wind Speed Restrictions.
- These capacities are for ABC+A counterweight.
- These capacities are for 360° working areas.
- These capacities are for 40–140 ft (12.19–42.67m) jib lengths only.
- The jib cannot be used on boom lengths over 240 ft (73.15m).
- The least stable rated condition is over the side.
- These capacities are in compliance with ASME/ANSI B30.5 at date of manufacture.
- These capacities apply only to the crane as originally manufactured and normally equipped by Link-Belt Construction Equipment Company.



# Working Range Diagram With Heavy Duty Boom – Extended Gauge



**Notes:**

1. **Boom geometry shown is for unloaded condition and crane standing level on firm supporting surface. Boom deflection, subsequent radius, and boom angle change must be accounted for when applying load to hook.**

# Load Chart With Heavy Duty Boom – Extended Gauge

This material is supplied for reference use only. Operator must refer to in-cab Crane Rating Manual and Operator's Manual to determine allowable crane lifting capacities and assembly and operating procedures.

Load Chart With Heavy Duty Boom & Jib – Extended Gauge – 360° Rotation – ABC + A [221,100 75,000 lb (100.3 + 34.0kg)] Cttw																							
40 ft (12.34m) Jib Length																							
70 ft (21.59m) Boom Length								100 ft (30.84m) Boom Length								120 ft (37.01m) Boom Length							
Load Radius		5° Jib Offset		15° Jib Offset		25° Jib Offset		Load Radius		5° Jib Offset		15° Jib Offset		25° Jib Offset		Load Radius		5° Jib Offset		15° Jib Offset		25° Jib Offset	
ft	m	kips	mt	kips	mt	kips	mt	ft	m	kips	mt	kips	mt	kips	mt	ft	m	kips	mt	kips	mt	kips	mt
25	7.71	128.0	58.1					30	9.25	128.0	58.1					35	10.79	123.8	56.2				
30	9.25	128.0	58.1					35	10.79	126.0	57.2	106.4	48.3			40	12.34	119.4	54.2	102.9	46.7		
35	10.79	126.4	57.3	97.6	44.3			40	12.34	123.6	56.1	97.9	44.4			50	15.42	115.9	52.6	89.7	40.7	65.6	29.8
40	12.34	120.8	54.8	88.8	40.3	66.8	30.3	50	15.42	117.0	53.1	84.6	38.4	63.2	28.7	60	18.50	112.8	51.2	80.8	36.7	59.8	27.1
50	15.42	102.2	46.4	78.7	35.7	58.5	26.5	60	18.50	103.8	47.1	78.1	35.4	57.2	26.0	70	21.59	99.9	45.3	75.1	34.1	55.1	25.0
60	18.50	85.4	38.7	68.0	30.8	52.1	23.6	70	21.59	89.6	40.6	69.6	31.6	52.3	23.7	80	24.67	88.1	40.0	68.2	30.9	51.2	23.2
70	21.59	76.5	34.7	60.2	27.3	47.3	21.5	80	24.67	81.0	38.7	62.9	28.5	48.4	22.0	90	27.76	78.5	35.6	62.5	28.4	47.9	21.7
80	24.67	66.9	30.4	54.1	24.5	43.5	19.7	90	27.76	73.5	33.3	57.5	26.1	45.2	20.5	100	30.84	68.2	30.9	57.7	26.2	45.1	20.5
90	27.76	59.4	26.9	49.3	22.4	40.5	18.4	100	30.84	66.2	30.0	53	24.0	42.5	19.3	110	33.92	59.9	27.2	53.8	24.4	42.8	19.4
100	30.84	53.6	24.3	45.5	20.6	40.5	18.4	110	33.92	60.3	27.4	49.5	22.5	40.4	18.3	120	37.01	53.1	24.1	50.5	22.9	40.9	18.6
110	33.92	49.1	22.3	43.0	19.5			120	37.01	54.2	24.6	46.3	21.0	40.4	18.3	130	40.09	47.5	21.6	47.7	21.6	40.5	18.4
								130	40.09	48.6	22.0	44.0	20.0	40.4	18.3	140	43.18	42.7	19.4	42.9	19.5	40.5	18.4
								140	43.18	43.8	19.9	42.5	19.3			150	46.26	38.8	17.6	38.4	17.4	38.5	17.5
																160	49.34	35.2	16.0	35.3	16.0		
140 ft (43.18m) Boom Length								160 ft (49.34m) Boom Length								180 ft (55.51m) Boom Length							
Load Radius		5° Jib Offset		15° Jib Offset		25° Jib Offset		Load Radius		5° Jib Offset		15° Jib Offset		25° Jib Offset		Load Radius		5° Jib Offset		15° Jib Offset		25° Jib Offset	
ft	m	kips	mt	kips	mt	kips	mt	ft	m	kips	mt	kips	mt	kips	mt	ft	m	kips	mt	kips	mt	kips	mt
35	10.79	117.6	53.3					40	12.34	111.3	50.5					40	12.34	99.4	45.1				
40	12.34	116.1	52.7					50	15.42	109.0	49.4	98.2	44.5	69.3	31.4	50	15.42	98.1	44.5	97.0	44.0		
50	15.42	113.3	51.4	94.2	42.7	67.6	30.7	60	18.50	106.7	48.4	88.3	40.1	64.0	29.0	60	18.50	96.8	43.9	91.9	41.7	65.6	29.8
60	18.50	110.6	50.2	84.2	38.2	62.1	28.2	70	21.59	104.7	47.5	80.3	36.4	59.5	27.0	70	21.59	95.4	43.3	83.9	38.1	61.3	27.8
70	21.59	108.2	49.1	80.0	36.3	57.5	26.1	80	24.67	89.5	40.6	77.3	35.1	55.7	25.3	80	24.67	88.4	40.1	80.6	36.6	57.6	26.1
80	24.67	90.6	41.1	72.9	33.1	53.6	24.3	90	27.76	76.4	34.7	71.2	32.3	52.4	23.8	90	27.76	75.3	34.2	75.2	34.1	54.4	24.7
90	27.76	77.5	35.2	67.0	30.4	50.3	22.8	100	30.84	66.0	29.9	66.2	30.0	49.6	22.5	100	30.84	64.8	29.4	65.8	29.9	51.5	23.4
100	30.84	67.1	30.4	62.1	28.2	47.5	21.6	110	33.92	57.6	26.1	58.4	26.5	47.2	21.4	110	33.92	56.5	25.6	57.3	26.0	49.1	22.3
110	33.92	58.8	26.7	57.9	26.3	45.1	20.5	120	37.01	50.9	23.1	51.5	23.4	45.0	20.4	120	37.01	49.7	22.5	50.4	22.9	46.9	21.3
120	37.01	52.0	23.6	52.5	23.8	43.0	19.5	130	40.09	45.2	20.5	45.8	20.8	43.2	19.6	130	40.09	44.0	20.0	44.7	20.3	44.9	20.4
130	40.09	46.4	21.1	46.8	21.2	41.3	18.7	140	43.18	40.4	18.3	40.6	18.4	41.0	18.6	140	43.18	39.6	18.0	40.1	18.2	40.2	18.2
140	43.18	41.6	18.9	42.0	19.1	40.5	18.4	150	46.26	36.6	16.6	36.6	16.6	37.0	16.8	150	46.26	35.5	16.1	35.6	16.2	36.0	16.3
150	46.26	37.7	17.1	37.5	17	37.8	17.2	160	49.34	33.1	15.0	33.0	15.0	33.3	15.1	160	49.34	31.9	14.5	31.9	14.5	32.3	14.7
160	49.34	34.2	15.5	33.9	15.4	34.1	15.5	170	52.43	30.0	13.6	29.8	13.5	30.0	13.6	170	52.43	28.8	13.1	28.8	13.1	29.1	13.2
170	52.43	31.1	14.1	31.2	14.2			180	55.51	27.2	12.3	27.0	12.3	27.1	12.3	180	55.51	26.1	11.8	26.0	11.8	26.2	11.9
180	55.51	28.3	12.8					190	58.60	24.7	11.2	24.9	11.3			190	58.60	23.6	10.7	23.5	10.7	23.6	10.7
								200	61.68	22.5	10.2					200	61.68	21.4	9.7	21.2	9.6	21.3	9.7
																210	64.76	19.4	8.8	19.6	8.9		
																220	67.85	17.5	7.9				

Load Chart With Heavy Duty Boom & Jib – Extended Gauge – 360° Rotation – ABC + A [221,100 75,000 lb (100.3 + 34.0kg)] Cttwt																			
220 ft (67.85m) Boom Length												40 ft (12.34m) Jib Length							
220 ft (67.85m) Boom Length								240 ft (74.02m) Boom Length											
Load Radius		5° Jib Offset		15° Jib Offset		25° Jib Offset		Load Radius		5° Jib Offset		15° Jib Offset		25° Jib Offset					
ft	m	kips	mt	kips	mt	kips	mt	ft	m	kips	mt	kips	mt	kips	mt				
50	15.42	64.6	29.3					50	15.42	54.2	24.6								
60	18.50	63.3	28.7	62.5	28.4	60.0	27.2	60	18.50	52.9	24.0	52.4	23.8						
70	21.59	62.0	28.1	60.9	27.6	58.1	26.4	70	21.59	51.6	23.4	50.7	23.0	48.7	22.1				
80	24.67	60.7	27.5	59.2	26.9	56.3	25.5	80	24.67	50.3	22.8	49.2	22.3	47.1	21.4				
90	27.76	59.4	26.9	57.8	26.2	54.8	24.9	90	27.76	49.0	22.2	47.8	21.7	45.5	20.6				
100	30.84	58.1	26.4	56.4	25.6	53.3	24.2	100	30.84	47.8	21.7	46.5	21.1	44.2	20.1				
110	33.92	54.2	24.6	55.1	25.0	52.0	23.6	110	33.92	46.6	21.1	45.2	20.5	42.9	19.5				
120	37.01	47.3	21.5	48.0	21.8	48.9	22.2	120	37.01	45.5	20.6	44.0	20.0	39.0	17.7				
130	40.09	41.6	18.9	42.3	19.2	43.0	19.5	130	40.09	40.5	18.4	41.3	18.7	38.0	17.2				
140	43.18	37.3	16.9	37.8	17.2	38.4	17.4	140	43.18	36.1	16.4	36.9	16.7	37.1	16.8				
150	46.26	33.1	15.0	33.6	15.2	34.1	15.5	150	46.26	32.0	14.5	32.7	14.8	33.3	15.1				
160	49.34	29.6	13.4	30.0	13.6	30.4	13.8	160	49.34	28.4	12.9	29.0	13.2	29.6	13.4				
170	52.43	26.5	12.0	26.7	12.1	27.1	12.3	170	52.43	25.3	11.5	25.9	11.8	26.3	11.9				
180	55.51	23.7	10.8	23.9	10.8	24.2	11.0	180	55.51	22.5	10.2	23.0	10.4	23.5	10.7				
190	58.60	21.3	9.7	21.4	9.7	21.7	9.8	190	58.60	20.1	9.1	20.5	9.3	20.9	9.5				
200	61.68	19.1	8.7	19.1	8.7	19.4	8.8	200	61.68	17.9	8.1	18.3	8.3	18.6	8.4				
210	64.76	17.1	7.8	17.1	7.8	17.3	7.9	210	64.76	15.9	7.2	16.3	7.4	16.6	7.5				
220	67.85	15.3	6.9	15.2	6.9	15.4	7.0	220	67.85	13.7	6.2	14.2	6.4	14.6	6.6				
230	70.93	13.2	6.0	13.0	5.9	13.2	6.0	230	70.93	11.7	5.3	12.1	5.5	12.4	5.6				
240	74.02	11.2	5.1	11.5	5.2			240	74.02	9.8	4.5	10.2	4.6	10.4	4.7				
250	77.10	9.3	4.2	9.5	4.3			250	77.10	8.1	3.7	8.4	3.8	8.5	3.9				
260	80.18	7.4	3.4					260	80.18	6.4	2.9	6.6	3.0						
								270	83.27	4.8	2.2	4.9	2.2						
								280	86.35	3.1	1.4								





Load Chart With Heavy Duty Boom & Jib – Extended Gauge – 360° Rotation – ABC + A [221,100 75,000 lb (100.3 + 34.0kg)] Cwt																							
60 ft (18.50m) Jib Length																							
200 ft (61.68m) Boom Length								220 ft (67.85m) Boom Length								240 ft (74.02m) Boom Length							
Load Radius		5° Jib Offset		15° Jib Offset		25° Jib Offset		Load Radius		5° Jib Offset		15° Jib Offset		25° Jib Offset		Load Radius		5° Jib Offset		15° Jib Offset		25° Jib Offset	
ft	m	kips	mt	kips	mt	kips	mt	ft	m	kips	mt	kips	mt	kips	mt	ft	m	kips	mt	kips	mt	kips	mt
50	15.42	66.7	30.3					50	15.42	56.3	25.5					60	18.50	46.7	21.2				
60	18.50	65.8	29.9	63.6	28.9			60	18.50	55.3	25.1	53.9	24.5			70	21.59	45.6	20.7	44.5	20.2		
70	21.59	64.9	29.4	62.3	28.3	43.3	19.6	70	21.59	54.2	24.6	52.5	23.8	44.0	20.0	80	24.67	44.5	20.2	43.1	19.6	37.6	17.1
80	24.67	63.9	29.0	58.0	26.3	40.7	18.5	80	24.67	53.1	24.1	51.2	23.2	41.5	18.8	90	27.76	43.4	19.7	41.9	19.0	36.5	16.6
90	27.76	62.9	28.5	53.8	24.4	40.2	18.2	90	27.76	52.1	23.6	50.0	22.7	40.1	18.2	100	30.84	42.3	19.2	40.7	18.5	35.6	16.2
100	30.84	61.9	28.1	50.2	22.8	39.7	18.0	100	30.84	51.0	23.1	48.7	22.1	40.1	18.2	110	33.92	41.3	18.7	37.5	17.0	34.7	15.7
110	33.92	56.1	25.5	47.1	21.4	37.7	17.1	110	33.92	50.0	22.7	47.7	21.6	38.8	17.6	120	37.01	38.3	17.4	36.6	16.6	33.8	15.3
120	37.01	49.3	22.4	44.3	20.1	35.9	16.3	120	37.01	48.1	21.8	46.1	20.9	37.0	16.8	130	40.09	37.4	17.0	35.7	16.2	33.0	15.0
130	40.09	43.6	19.8	41.9	19.0	34.3	15.6	130	40.09	42.4	19.2	43.5	19.7	35.4	16.1	140	43.18	36.6	16.6	34.9	15.8	32.2	14.6
140	43.18	39.2	17.8	40.2	18.2	32.9	14.9	140	43.18	38.1	17.3	39.1	17.7	34.0	15.4	150	46.26	32.8	14.9	33.8	15.3	31.5	14.3
150	46.26	35.1	15.9	36.0	16.3	31.6	14.3	150	46.26	33.9	15.4	34.9	15.8	32.7	14.8	160	49.34	29.2	13.2	30.1	13.7	30.8	14.0
160	49.34	31.5	14.3	32.3	14.7	30.5	13.8	160	49.34	30.3	13.7	31.2	14.2	31.5	14.3	170	52.43	26.0	11.8	26.9	12.2	27.7	12.6
170	52.43	28.4	12.9	29.1	13.2	29.4	13.3	170	52.43	27.2	12.3	27.8	12.6	28.5	12.9	180	55.51	23.3	10.6	24.1	10.9	24.8	11.3
180	55.51	25.6	11.6	26.0	11.8	26.5	12.0	180	55.51	24.4	11.1	25.0	11.3	25.6	11.6	190	58.60	20.8	9.4	21.5	9.8	22.2	10.1
190	58.60	23.2	10.5	23.4	10.6	23.9	10.8	190	58.60	22.0	10.0	22.3	10.1	22.9	10.4	200	61.68	18.6	8.4	19.3	8.8	19.8	9.0
200	61.68	21.0	9.5	21.2	9.6	21.6	9.8	200	61.68	19.8	9.0	20.1	9.1	20.6	9.3	210	64.76	16.6	7.5	17.2	7.8	17.7	8.0
210	64.76	19.0	8.6	19.0	8.6	19.4	8.8	210	64.76	17.8	8.1	18.0	8.2	18.5	8.4	220	67.85	14.8	6.7	15.4	7.0	15.8	7.2
220	67.85	17.2	7.8	17.3	7.9	17.5	7.9	220	67.85	16.0	7.3	16.3	7.4	16.6	7.5	230	70.93	12.8	5.8	13.5	6.1	14.0	6.4
230	70.93	15.6	7.1	15.5	7.0	15.7	7.1	230	70.93	14.4	6.5	14.5	6.6	14.8	6.7	240	74.02	10.9	4.9	11.6	5.3	12.0	5.4
240	74.02	13.9	6.3	13.8	6.3	14.0	6.4	240	74.02	12.5	5.7	12.5	5.7	12.9	5.9	250	77.10	9.2	4.2	9.8	4.5	10.2	4.6
250	77.10	12.0	5.4	12.3	5.6			250	77.10	10.7	4.9	10.7	4.9	11.0	5.0	260	80.18	7.6	3.5	8.1	3.7	8.4	3.8
260	80.18	10.0	4.5					260	80.18	9.0	4.1	9.4	4.3			270	83.27	6.1	2.8	6.5	3.0	6.7	3.0
								270	83.27	7.4	3.4	7.7	3.5			280	86.35	4.6	2.1	5.0	2.3		
								280	86.35	5.7	2.6					290	89.44	3.2	1.5	3.5	1.6		

Load Chart With Heavy Duty Boom & Jib – Extended Gauge – 360° Rotation – ABC + A [221,100 75,000 lb (100.3 + 34.0kg)] Ctwt																							
80 ft (24.67m) Jib Length																							
70 ft (21.59m) Boom Length								100 ft (30.84m) Boom Length								120 ft (37.01m) Boom Length							
Load Radius		5° Jib Offset		15° Jib Offset		25° Jib Offset		Load Radius		5° Jib Offset		15° Jib Offset		25° Jib Offset		Load Radius		5° Jib Offset		15° Jib Offset		25° Jib Offset	
ft	m	kips	mt	kips	mt	kips	mt	ft	m	kips	mt	kips	mt	kips	mt	ft	m	kips	mt	kips	mt	kips	mt
50	15.42	64.6	29.3	47.6	21.6			40	12.34	70.6	32.0					40	12.34	69.5	31.5				
60	18.50	54.2	24.6	41.2	18.7	33.6	15.2	50	15.42	67.9	30.8					50	15.42	67.3	30.5				
70	21.59	46.5	21.1	39.1	17.7	30	13.6	60	18.50	62.0	28.1	44.6	20.2			60	18.50	65.2	29.6	46.4	21.1		
80	24.67	40.7	18.5	34.7	15.7	27.2	12.3	70	21.59	53.7	24.4	40.4	18.3	31.8	14.4	70	21.59	58.1	26.4	41.7	18.9	32.8	14.9
90	27.76	38.8	17.6	31.2	14.2	24.8	11.3	80	24.67	47.3	21.5	38.7	17.6	29.1	13.2	80	24.67	51.3	23.3	40.3	18.3	30.2	13.7
100	30.84	34.7	15.7	28.4	12.9	22.8	10.3	90	27.76	42.2	19.1	35.0	15.9	26.8	12.2	90	27.76	45.9	20.8	37.3	16.9	28.0	12.7
110	33.92	31.3	14.2	26	11.8	21.2	9.6	100	30.84	40.4	18.3	32.0	14.5	24.9	11.3	100	30.84	41.5	18.8	34.2	15.5	26.1	11.8
120	37.01	28.5	12.9	24.1	10.9	19.8	9.0	110	33.92	37.1	16.8	29.5	13.4	23.3	10.6	110	33.92	40.4	18.3	31.6	14.3	24.4	11.1
130	40.09	26.2	11.9	22.4	10.2	18.7	8.5	120	37.01	33.9	15.4	27.4	12.4	21.9	9.9	120	37.01	37.3	16.9	29.4	13.3	23.0	10.4
140	43.18	24.3	11.0	21.1	9.6	17.9	8.1	130	40.09	31.1	14.1	25.6	11.6	20.6	9.3	130	40.09	34.4	15.6	27.5	12.5	21.8	9.9
150	46.26	22.7	10.3	20.1	9.1			140	43.18	28.8	13.1	24.0	10.9	19.6	8.9	140	43.18	31.8	14.4	25.8	11.7	20.7	9.4
								150	46.26	26.9	12.2	22.6	10.3	18.7	8.5	150	46.26	29.6	13.4	24.4	11.1	19.8	9.0
								160	49.34	25.1	11.4	21.5	9.8	18.0	8.2	160	49.34	27.7	12.6	23.1	10.5	19.0	8.6
								170	52.43	23.7	10.8	20.6	9.3	17.6	8.0	170	52.43	26.1	11.8	22.0	10.0	18.3	8.3
								180	55.51	22.5	10.2	19.9	9.0			180	55.51	24.6	11.2	21.1	9.6	17.8	8.1
																190	58.60	23.4	10.6	20.3	9.2	17.5	7.9
																200	61.68	22.4	10.2	19.9	9.0		
140 ft (43.18m) Boom Length								160 ft (49.34m) Boom Length								180 ft (55.51m) Boom Length							
Load Radius		5° Jib Offset		15° Jib Offset		25° Jib Offset		Load Radius		5° Jib Offset		15° Jib Offset		25° Jib Offset		Load Radius		5° Jib Offset		15° Jib Offset		25° Jib Offset	
ft	m	kips	mt	kips	mt	kips	mt	ft	m	kips	mt	kips	mt	kips	mt	ft	m	kips	mt	kips	mt	kips	mt
50	15.42	66.0	29.9					50	15.42	64.2	29.1					50	15.42	61.8	28				
60	18.50	64.2	29.1	48.1	21.8			60	18.50	62.7	28.4	49.5	22.5			60	18.50	60.5	27.4				
70	21.59	62.3	28.3	43.4	19.7	33.6	15.2	70	21.59	61.2	27.8	45.0	20.4			70	21.59	59.3	26.9	46.3	21.0		
80	24.67	55.2	25	40.3	18.3	31.1	14.1	80	24.67	58.9	26.7	41.2	18.7	31.9	14.5	80	24.67	58.1	26.4	42.6	19.3	32.6	14.8
90	27.76	49.5	22.5	39.3	17.8	28.9	13.1	90	27.76	53.0	24.0	40.2	18.2	29.8	13.5	90	27.76	56.3	25.5	40.2	18.2	30.6	13.9
100	30.84	44.9	20.4	36.2	16.4	27.1	12.3	100	30.84	48.1	21.8	38.1	17.3	28.0	12.7	100	30.84	51.2	23.2	39.8	18.1	28.8	13.1
110	33.92	41.0	18.6	33.6	15.2	25.5	11.6	110	33.92	44.0	20.0	35.4	16.1	26.4	12.0	110	33.92	46.9	21.3	37.0	16.8	27.2	12.3
120	37.01	40.3	18.3	31.3	14.2	24.1	10.9	120	37.01	40.5	18.4	33.1	15.0	25.0	11.3	120	37.01	43.3	19.6	34.7	15.7	25.8	11.7
130	40.09	37.5	17.0	29.3	13.3	22.8	10.3	130	40.09	40.3	18.3	31.0	14.1	23.7	10.8	130	40.09	40.1	18.2	32.6	14.8	24.6	11.2
140	43.18	34.8	15.8	27.6	12.5	21.7	9.8	140	43.18	37.6	17.1	29.2	13.2	22.6	10.3	140	43.18	40.1	18.2	30.7	13.9	23.5	10.7
150	46.26	32.4	14.7	26.0	11.8	20.7	9.4	150	46.26	35.1	15.9	27.6	12.5	21.7	9.8	150	46.26	36.8	16.7	29.1	13.2	22.5	10.2
160	49.34	30.3	13.7	24.7	11.2	19.9	9.0	160	49.34	32.9	14.9	26.2	11.9	20.8	9.4	160	49.34	33.2	15.1	27.7	12.6	21.6	9.8
170	52.43	28.5	12.9	23.5	10.7	19.2	8.7	170	52.43	30.9	14.0	25.0	11.3	20.0	9.1	170	52.43	30.1	13.7	26.4	12.0	20.8	9.4
180	55.51	26.9	12.2	22.5	10.2	18.5	8.4	180	55.51	28.5	12.9	23.8	10.8	19.3	8.8	180	55.51	27.4	12.4	25.2	11.4	20.1	9.1
190	58.60	25.5	11.6	21.6	9.8	18.0	8.2	190	58.60	26.1	11.8	22.9	10.4	18.7	8.5	190	58.60	24.9	11.3	24.1	10.9	19.4	8.8
200	61.68	24.2	11.0	20.8	9.4	17.6	8.0	200	61.68	23.9	10.8	22.0	10.0	18.2	8.3	200	61.68	22.7	10.3	23.2	10.5	18.8	8.5
210	64.76	23.0	10.4	20.2	9.2			210	64.76	21.9	9.9	21.2	9.6	17.8	8.1	210	64.76	20.7	9.4	21.2	9.6	18.4	8.4
220	67.85	21.2	9.6					220	67.85	20.1	9.1	20.4	9.3	17.5	7.9	220	67.85	18.9	8.6	19.4	8.8	17.9	8.1
								230	70.93	18.5	8.4	18.7	8.5			230	70.93	17.3	7.9	17.7	8.0	17.6	8.0
								240	74.02	16.9	7.7					240	74.02	15.8	7.2	15.7	7.1	15.9	7.2
																250	77.10	14.4	6.5	14.7	6.7		
																260	80.18	12.5	5.7				

Load Chart With Heavy Duty Boom & Jib – Extended Gauge – 360° Rotation – ABC + A [221,100 75,000 lb (100.3 + 34.0kg)] Cwt																							
80 ft (24.67m) Jib Length																							
200 ft (61.68m) Boom Length								220 ft (67.85m) Boom Length								240 ft (74.02m) Boom Length							
Load Radius		5° Jib Offset		15° Jib Offset		25° Jib Offset		Load Radius		5° Jib Offset		15° Jib Offset		25° Jib Offset		Load Radius		5° Jib Offset		15° Jib Offset		25° Jib Offset	
ft	m	kips	mt	kips	mt	kips	mt	ft	m	kips	mt	kips	mt	kips	mt	ft	m	kips	mt	kips	mt	kips	mt
60	18.50	55.2	25.0					60	18.50	47.4	21.5					60	18.50	38.6	17.5				
70	21.59	54.6	24.8	47.6	21.6			70	21.59	46.6	21.1	44.4	20.1			70	21.59	37.7	17.1				
80	24.67	53.9	24.5	43.9	19.9	33.2	15.1	80	24.67	45.8	20.8	43.4	19.7	33.8	15.3	80	24.67	37.0	16.8	35.4	16.1		
90	27.76	53.2	24.1	40.7	18.5	31.2	14.2	90	27.76	45.0	20.4	42.0	19.1	31.9	14.5	90	27.76	36.3	16.5	34.5	15.7	31.1	14.1
100	30.84	52.5	23.8	40.2	18.2	29.5	13.4	100	30.84	44.2	20.1	39.6	18.0	30.2	13.7	100	30.84	35.5	16.1	33.7	15.3	30.4	13.8
110	33.92	49.7	22.5	38.6	17.5	28.0	12.7	110	33.92	43.4	19.7	38.8	17.6	28.7	13.0	110	33.92	34.8	15.8	32.9	14.9	29.3	13.3
120	37.01	45.9	20.8	36.2	16.4	26.6	12.1	120	37.01	42.6	19.3	37.7	17.1	27.3	12.4	120	37.01	34.0	15.4	32.2	14.6	28.0	12.7
130	40.09	42.7	19.4	34.1	15.5	25.4	11.5	130	40.09	41.8	19.0	35.5	16.1	26.1	11.8	130	40.09	33.3	15.1	31.4	14.2	26.8	12.2
140	43.18	39.8	18.1	32.2	14.6	24.3	11.0	140	43.18	38.7	17.6	33.6	15.2	25.0	11.3	140	43.18	32.6	14.8	30.7	13.9	25.7	11.7
150	46.26	35.7	16.2	30.6	13.9	23.3	10.6	150	46.26	34.5	15.7	31.9	14.5	24.0	10.9	150	46.26	31.9	14.5	30.1	13.7	24.7	11.2
160	49.34	32.1	14.6	29.1	13.2	22.4	10.2	160	49.34	30.9	14	30.4	13.8	23.1	10.5	160	49.34	29.8	13.5	29.4	13.3	23.7	10.8
170	52.43	29.0	13.2	27.7	12.6	21.5	9.8	170	52.43	27.8	12.6	28.9	13.1	22.2	10.1	170	52.43	26.6	12.1	27.8	12.6	22.9	10.4
180	55.51	26.2	11.9	26.5	12.0	20.8	9.4	180	55.51	25.0	11.3	26.0	11.8	21.5	9.8	180	55.51	23.9	10.8	24.9	11.3	22.1	10.0
190	58.60	23.7	10.8	24.5	11.1	20.1	9.1	190	58.60	22.6	10.3	23.5	10.7	20.8	9.4	190	58.60	21.4	9.7	22.4	10.2	21.4	9.7
200	61.68	21.5	9.8	22.2	10.1	19.5	8.9	200	61.68	20.4	9.3	21.2	9.6	20.2	9.2	200	61.68	19.2	8.7	20.1	9.1	20.8	9.4
210	64.76	19.6	8.9	20.2	9.2	19.0	8.6	210	64.76	18.4	8.4	19.0	8.6	19.5	8.9	210	64.76	17.2	7.8	18.0	8.2	18.8	8.5
220	67.85	17.8	8.1	18.3	8.3	18.5	8.4	220	67.85	16.6	7.5	17.0	7.7	17.6	8.0	220	67.85	15.4	7.0	16.2	7.4	16.8	7.6
230	70.93	16.1	7.3	16.3	7.4	16.7	7.6	230	70.93	15.0	6.8	15.3	6.9	15.8	7.2	230	70.93	13.6	6.2	14.4	6.5	15.0	6.8
240	74.02	14.6	6.6	14.8	6.7	15.1	6.9	240	74.02	13.4	6.1	13.7	6.2	14.1	6.4	240	74.02	11.8	5.4	12.6	5.7	13.4	6.1
250	77.10	13.2	6.0	13.3	6.0	13.6	6.2	250	77.10	11.7	5.3	12.0	5.4	12.5	5.7	250	77.10	10.1	4.6	10.9	4.9	11.5	5.2
260	80.18	11.5	5.2	11.5	5.2	11.8	5.4	260	80.18	10.1	4.6	10.3	4.7	10.7	4.9	260	80.18	8.5	3.9	9.2	4.2	9.8	4.5
270	83.27	9.9	4.5	10.2	4.6			270	83.27	8.6	3.9	8.7	4.0	9.0	4.1	270	83.27	7.0	3.2	7.7	3.5	8.2	3.7
280	86.35	8.1	3.7					280	86.35	7.1	3.2	7.5	3.4			280	86.35	5.7	2.6	6.2	2.8	6.6	3.0
								290	89.44	5.7	2.6	6.0	2.7			290	89.44	4.3	2.0	4.8	2.2	5.1	2.3
								300	92.52	4.2	1.9					300	92.52	3.1	1.4	3.5	1.6		

Load Chart With Heavy Duty Boom & Jib – Extended Gauge – 360° Rotation – ABC + A [221,100 75,000 lb (100.3 + 34.0kg)] Ctw																							
100 ft (30.84m) Jib Length																							
70 ft (21.59m) Boom Length								100 ft (30.84m) Boom Length								120 ft (37.01m) Boom Length							
Load Radius		5° Jib Offset		15° Jib Offset		25° Jib Offset		Load Radius		5° Jib Offset		15° Jib Offset		25° Jib Offset		Load Radius		5° Jib Offset		15° Jib Offset		25° Jib Offset	
ft	m	kips	mt	kips	mt	kips	mt	ft	m	kips	mt	kips	mt	kips	mt	ft	m	kips	mt	kips	mt	kips	mt
40	12.34	57.6	26.1					50	15.42	54.9	24.9					50	15.42	54.3	24.6				
50	15.42	54.6	24.8					60	18.50	51.5	23.4	40.1	18.2			60	18.50	52.7	23.9				
60	18.50	46.0	20.9	37.6	17.1			70	21.59	44.7	20.3	35.5	16.1			70	21.59	47.8	21.7	37.0	16.8		
70	21.59	40.4	18.3	32.9	14.9	25.1	11.4	80	24.67	40.3	18.3	31.7	14.4	23.7	10.8	80	24.67	42.3	19.2	33.3	15.1	24.4	11.1
80	24.67	37.1	16.8	29.2	13.2	22.6	10.3	90	27.76	37.7	17.1	28.8	13.1	21.8	9.9	90	27.76	40.3	18.3	30.3	13.7	22.5	10.2
90	27.76	32.8	14.9	26.2	11.9	20.5	9.3	100	30.84	33.9	15.4	26.3	11.9	20.2	9.2	100	30.84	36.8	16.7	27.8	12.6	20.9	9.5
100	30.84	29.3	13.3	23.7	10.8	18.8	8.5	110	33.92	30.7	13.9	24.2	11.0	18.7	8.5	110	33.92	33.4	15.2	25.6	11.6	19.5	8.9
110	33.92	26.4	12.0	21.7	9.8	17.3	7.9	120	37.01	28.0	12.7	22.3	10.1	17.5	7.9	120	37.01	30.5	13.8	23.8	10.8	18.3	8.3
120	37.01	24.0	10.9	19.9	9.0	16.1	7.3	130	40.09	25.7	11.7	20.8	9.4	16.4	7.4	130	40.09	28.1	12.8	22.1	10.0	17.2	7.8
130	40.09	22.0	10.0	18.4	8.4	15.0	6.8	140	43.18	23.7	10.8	19.4	8.8	15.5	7.0	140	43.18	26.0	11.8	20.8	9.4	16.3	7.4
140	43.18	20.3	9.2	17.2	7.8	14.1	6.4	150	46.26	22.1	10.0	18.2	8.3	14.7	6.7	150	46.26	24.2	11.0	19.5	8.9	15.5	7.0
150	46.26	18.8	8.5	16.1	7.3	13.4	6.1	160	49.34	20.6	9.3	17.2	7.8	14.0	6.4	160	49.34	22.6	10.3	18.4	8.4	14.7	6.7
160	49.34	17.6	8.0	15.2	6.9	12.8	5.8	170	52.43	19.3	8.8	16.3	7.4	13.4	6.1	170	52.43	21.2	9.6	17.5	7.9	14.1	6.4
170	52.43	16.5	7.5	14.5	6.6			180	55.51	18.2	8.3	15.5	7.0	12.9	5.9	180	55.51	19.9	9.0	16.6	7.5	13.5	6.1
								190	58.60	17.2	7.8	14.9	6.8	12.6	5.7	190	58.60	18.8	8.5	15.9	7.2	13.1	5.9
								200	61.68	16.4	7.4	14.4	6.5			200	61.68	17.8	8.1	15.2	6.9	12.7	5.8
																210	64.76	17.0	7.7	14.7	6.7	12.5	5.7
																220	67.85	16.3	7.4	14.4	6.5		
140 ft (43.18m) Boom Length								160 ft (49.34m) Boom Length								180 ft (55.51m) Boom Length							
Load Radius		5° Jib Offset		15° Jib Offset		25° Jib Offset		Load Radius		5° Jib Offset		15° Jib Offset		25° Jib Offset		Load Radius		5° Jib Offset		15° Jib Offset		25° Jib Offset	
ft	m	kips	mt	kips	mt	kips	mt	ft	m	kips	mt	kips	mt	kips	mt	ft	m	kips	mt	kips	mt	kips	mt
50	15.42	53.4	24.2					60	18.50	50.8	23.0					60	18.50	49.3	22.4				
60	18.50	52.0	23.6					70	21.59	49.7	22.5	39.5	17.9			70	21.59	48.3	21.9	40.1	18.2		
70	21.59	50.5	22.9	38.3	17.4			80	24.67	47.7	21.6	36.0	16.3			80	24.67	47.3	21.5	37.1	16.8		
80	24.67	45.1	20.5	34.7	15.7	24.9	11.3	90	27.76	43.0	19.5	33.0	15.0	23.7	10.8	90	27.76	45.4	20.6	34.2	15.5	24.1	10.9
90	27.76	40.5	18.4	31.7	14.4	23.1	10.5	100	30.84	40.2	18.2	30.5	13.8	22.2	10.1	100	30.84	41.3	18.7	31.6	14.3	22.7	10.3
100	30.84	39.6	18.0	29.2	13.2	21.6	9.8	110	33.92	38.6	17.5	28.3	12.8	20.8	9.4	110	33.92	40.2	18.2	29.5	13.4	21.4	9.7
110	33.92	36.0	16.3	27.0	12.3	20.2	9.2	120	37.01	35.4	16.1	26.4	12.0	19.7	8.9	120	37.01	37.7	17.1	27.5	12.5	20.2	9.2
120	37.01	33.0	15.0	25.1	11.4	19.0	8.6	130	40.09	32.6	14.8	24.7	11.2	18.6	8.4	130	40.09	34.8	15.8	25.9	11.8	19.2	8.7
130	40.09	30.4	13.8	23.5	10.7	18.0	8.2	140	43.18	30.3	13.7	23.2	10.5	17.7	8.0	140	43.18	32.4	14.7	24.4	11.1	18.3	8.3
140	43.18	28.2	12.8	22.0	10.0	17.0	7.7	150	46.26	28.2	12.8	21.9	9.9	16.8	7.6	150	46.26	30.2	13.7	22.9	10.4	17.4	7.9
150	46.26	26.2	11.9	20.8	9.4	16.2	7.4	160	49.34	26.4	12.0	20.7	9.4	16.1	7.3	160	49.34	28.3	12.8	21.8	9.9	16.7	7.6
160	49.34	24.5	11.1	19.6	8.9	15.4	7.0	170	52.43	24.8	11.3	19.7	8.9	15.4	7.0	170	52.43	26.6	12.1	20.7	9.4	16.0	7.3
170	52.43	23.0	10.4	18.6	8.4	14.8	6.7	180	55.51	23.4	10.6	18.7	8.5	14.8	6.7	180	55.51	25.0	11.3	19.8	9.0	15.4	7.0
180	55.51	21.7	9.8	17.7	8.0	14.2	6.4	190	58.60	22.1	10.0	17.9	8.1	14.3	6.5	190	58.60	23.7	10.8	18.9	8.6	14.8	6.7
190	58.60	20.4	9.3	16.9	7.7	13.7	6.2	200	61.68	20.9	9.5	17.1	7.8	13.8	6.3	200	61.68	22.5	10.2	18.1	8.2	14.3	6.5
200	61.68	19.4	8.8	16.2	7.4	13.2	6.0	210	64.76	19.9	9.0	16.4	7.4	13.4	6.1	210	64.76	21.1	9.6	17.3	7.9	13.9	6.3
210	64.76	18.4	8.4	15.5	7.0	12.9	5.9	220	67.85	18.9	8.6	15.8	7.2	13.0	5.9	220	67.85	19.4	8.8	16.7	7.6	13.5	6.1
220	67.85	17.6	8.0	15.0	6.8	12.6	5.7	230	70.93	18.1	8.2	15.3	6.9	12.7	5.8	230	70.93	17.7	8.0	16.1	7.3	13.1	5.9
230	70.93	16.8	7.6	14.6	6.6			240	74.02	17.4	7.9	14.8	6.7	12.5	5.7	240	74.02	16.2	7.4	15.6	7.1	12.8	5.8
240	74.02	16.2	7.4					250	77.10	16.0	7.3	14.5	6.6			250	77.10	14.9	6.8	15.1	6.9	12.6	5.7
								260	80.18	14.7	6.7					260	80.18	13.6	6.2	13.9	6.3	12.4	5.6
																270	83.27	12.1	5.5	12.6	5.7		
																280	86.35	10.4	4.7				

Load Chart With Heavy Duty Boom & Jib – Extended Gauge – 360° Rotation – ABC + A [221,100 75,000 lb (100.3 + 34.0kg)] Cwt																							
100 ft (30.84m) Jib Length																							
200 ft (61.68m) Boom Length								220 ft (67.85m) Boom Length								240 ft (74.02m) Boom Length							
Load Radius		5° Jib Offset		15° Jib Offset		25° Jib Offset		Load Radius		5° Jib Offset		15° Jib Offset		25° Jib Offset		Load Radius		5° Jib Offset		15° Jib Offset		25° Jib Offset	
ft	m	kips	mt	kips	mt	kips	mt	ft	m	kips	mt	kips	mt	kips	mt	ft	m	kips	mt	kips	mt	kips	mt
60	18.50	45.2	20.5					60	18.50	38.0	17.2					70	21.59	32.8	14.9				
70	21.59	44.8	20.3					70	21.59	37.6	17.1					80	24.67	32.3	14.7	30.5	13.8		
80	24.67	44.4	20.1	38.1	17.3			80	24.67	37.1	16.8	34.6	15.7			90	27.76	31.7	14.4	29.8	13.5		
90	27.76	43.9	19.9	35.2	16.0	24.6	11.2	90	27.76	36.7	16.7	34.0	15.4			100	30.84	31.1	14.1	29.2	13.2	23.9	10.8
100	30.84	43.4	19.7	32.7	14.8	23.1	10.5	100	30.84	36.2	16.4	33.5	15.2	23.6	10.7	110	33.92	30.5	13.8	28.5	12.9	22.7	10.3
110	33.92	39.9	18.1	30.5	13.8	21.9	9.9	110	33.92	35.7	16.2	31.6	14.3	22.3	10.1	120	37.01	30.0	13.6	27.9	12.7	21.7	9.8
120	37.01	39.9	18.1	28.6	13.0	20.8	9.4	120	37.01	35.2	16.0	29.6	13.4	21.2	9.6	130	40.09	29.4	13.3	27.4	12.4	20.7	9.4
130	40.09	37	16.8	26.9	12.2	19.8	9.0	130	40.09	34.7	15.7	27.9	12.7	20.2	9.2	140	43.18	28.8	13.1	26.8	12.2	19.8	9.0
140	43.18	34.4	15.6	25.4	11.5	18.8	8.5	140	43.18	34.2	15.5	26.4	12.0	19.3	8.8	150	46.26	28.3	12.8	25.9	11.8	19.0	8.6
150	46.26	32.1	14.6	24.0	10.9	18.0	8.2	150	46.26	33.7	15.3	25.0	11.3	18.5	8.4	160	49.34	27.7	12.6	24.7	11.2	18.2	8.3
160	49.34	30.1	13.7	22.8	10.3	17.2	7.8	160	49.34	31.4	14.2	23.8	10.8	17.8	8.1	170	52.43	27.1	12.3	23.5	10.7	17.5	7.9
170	52.43	28.3	12.8	21.6	9.8	16.5	7.5	170	52.43	28.3	12.8	22.6	10.3	17.1	7.8	180	55.51	24.3	11.0	22.5	10.2	16.9	7.7
180	55.51	26.6	12.1	20.7	9.4	15.9	7.2	180	55.51	25.5	11.6	21.6	9.8	16.4	7.4	190	58.60	21.9	9.9	21.5	9.8	16.3	7.4
190	58.60	24.2	11.0	19.8	9.0	15.3	6.9	190	58.60	23.0	10.4	20.7	9.4	15.8	7.2	200	61.68	19.6	8.9	20.7	9.4	15.8	7.2
200	61.68	22.0	10.0	19.0	8.6	14.8	6.7	200	61.68	20.8	9.4	19.8	9.0	15.3	6.9	210	64.76	17.7	8.0	18.7	8.5	15.3	6.9
210	64.76	20.0	9.1	18.2	8.3	14.4	6.5	210	64.76	18.8	8.5	19.0	8.6	14.8	6.7	220	67.85	15.8	7.2	16.8	7.6	14.8	6.7
220	67.85	18.2	8.3	17.5	7.9	13.9	6.3	220	67.85	17.0	7.7	17.9	8.1	14.4	6.5	230	70.93	14.2	6.4	15.1	6.9	14.4	6.5
230	70.93	16.6	7.5	16.9	7.7	13.5	6.1	230	70.93	15.4	7.0	16.2	7.4	14.0	6.4	240	74.02	12.4	5.6	13.5	6.1	14.0	6.4
240	74.02	15.1	6.9	15.7	7.1	13.2	6.0	240	74.02	13.9	6.3	14.6	6.6	13.6	6.2	250	77.10	10.7	4.9	11.8	5.4	12.7	5.8
250	77.10	13.7	6.2	14.2	6.4	12.9	5.9	250	77.10	12.4	5.6	13.2	6.0	13.3	6.0	260	80.18	9.2	4.2	10.1	4.6	11.0	5.0
260	80.18	12.4	5.6	12.9	5.9	12.7	5.8	260	80.18	10.8	4.9	11.4	5.2	12.0	5.4	270	83.27	7.7	3.5	8.6	3.9	9.3	4.2
270	83.27	10.9	4.9	11.1	5.0	11.5	5.2	270	83.27	9.4	4.3	9.7	4.4	10.3	4.7	280	86.35	6.4	2.9	7.2	3.3	7.8	3.5
280	86.35	9.4	4.3	9.5	4.3	9.8	4.5	280	86.35	8.0	3.6	8.2	3.7	8.7	4.0	290	89.44	5.1	2.3	5.8	2.6	6.4	2.9
290	89.44	7.9	3.6	8.3	3.8			290	89.44	6.6	3.0	6.8	3.1	7.2	3.3	300	92.52	3.9	1.8	4.5	2.0	5.0	2.3
300	92.52	6.4	2.9					300	92.52	5.3	2.4	5.8	2.6			310	95.60	2.7	1.2	3.3	1.5	3.6	1.6
								310	95.60	4.1	1.9	4.5	2.0										
								320	98.69	2.8	1.3												

Load Chart With Heavy Duty Boom & Jib – Extended Gauge – 360° Rotation – ABC + A [221,100 75,000 lb (100.3 + 34.0kg)] Ctwt																							
120 ft (37.01m) Jib Length																							
70 ft (21.59m) Boom Length								100 ft (30.84m) Boom Length								120 ft (37.01m) Boom Length							
Load Radius		5° Jib Offset		15° Jib Offset		25° Jib Offset		Load Radius		5° Jib Offset		15° Jib Offset		25° Jib Offset		Load Radius		5° Jib Offset		15° Jib Offset		25° Jib Offset	
ft	m	kips	mt	kips	mt	kips	mt	ft	m	kips	mt	kips	mt	kips	mt	ft	m	kips	mt	kips	mt	kips	mt
50	15.42	43.9	19.9					50	15.42	44.4	20.1					50	15.42	43.9	19.9				
60	18.50	39.3	17.8					60	18.50	42.0	19.1					60	18.50	42.2	19.1				
70	21.59	37.0	16.8	28.4	12.9			70	21.59	38.1	17.3	30.1	13.7			70	21.59	40.2	18.2	31.1	14.1		
80	24.67	32.2	14.6	25.1	11.4			80	24.67	36.2	16.4	27.0	12.3			80	24.67	36.8	16.7	28.0	12.7		
90	27.76	28.4	12.9	22.5	10.2	17.4	7.9	90	27.76	32.2	14.6	24.4	11.1	18.2	8.3	90	27.76	34.5	15.7	25.5	11.6	18.6	8.4
100	30.84	25.4	11.5	20.3	9.2	15.9	7.2	100	30.84	28.9	13.1	22.2	10.1	16.8	7.6	100	30.84	31.1	14.1	23.3	10.6	17.3	7.9
110	33.92	22.8	10.3	18.5	8.4	14.5	6.6	110	33.92	26.1	11.8	20.3	9.2	15.5	7.0	110	33.92	28.2	12.8	21.4	9.7	16.0	7.3
120	37.01	20.7	9.4	16.9	7.7	13.4	6.1	120	37.01	23.8	10.8	18.7	8.5	14.4	6.5	120	37.01	25.7	11.7	19.8	9.0	15.0	6.8
130	40.09	18.9	8.6	15.6	7.1	12.4	5.6	130	40.09	21.8	9.9	17.3	7.9	13.4	6.1	130	40.09	23.6	10.7	18.4	8.4	14.0	6.4
140	43.18	17.4	7.9	14.4	6.5	11.6	5.3	140	43.18	20.1	9.1	16.1	7.3	12.6	5.7	140	43.18	21.8	9.9	17.2	7.8	13.2	6.0
150	46.26	16.1	7.3	13.4	6.1	10.8	4.9	150	46.26	18.6	8.4	15.1	6.9	11.8	5.4	150	46.26	20.3	9.2	16.1	7.3	12.4	5.6
160	49.34	14.9	6.8	12.5	5.7	10.2	4.6	160	49.34	17.3	7.9	14.1	6.4	11.2	5.1	160	49.34	18.9	8.6	15.1	6.9	11.8	5.4
170	52.43	13.9	6.3	11.8	5.4	9.7	4.4	170	52.43	16.2	7.4	13.3	6	10.6	4.8	170	52.43	17.6	8	14.2	6.4	11.2	5.1
180	55.51	13.0	5.9	11.2	5.1	9.2	4.2	180	55.51	15.1	6.9	12.6	5.7	10.1	4.6	180	55.51	16.5	7.5	13.5	6.1	10.6	4.8
190	58.60	12.3	5.6	10.7	4.9			190	58.60	14.2	6.4	11.9	5.4	9.7	4.4	190	58.60	15.6	7.1	12.8	5.8	10.2	4.6
								200	61.68	13.4	6.1	11.4	5.2	9.3	4.2	200	61.68	14.7	6.7	12.2	5.5	9.8	4.5
								210	64.76	12.7	5.8	10.9	4.9	9.1	4.1	210	64.76	13.9	6.3	11.6	5.3	9.4	4.3
								220	67.85	12.2	5.5	10.6	4.8			220	67.85	13.2	6.0	11.2	5.1	9.2	4.2
																230	70.93	12.6	5.7	10.8	4.9	9.0	4.1
																240	74.02	12.1	5.5	10.6	4.8		
140 ft (43.18m) Boom Length								160 ft (49.34m) Boom Length								180 ft (55.51m) Boom Length							
Load Radius		5° Jib Offset		15° Jib Offset		25° Jib Offset		Load Radius		5° Jib Offset		15° Jib Offset		25° Jib Offset		Load Radius		5° Jib Offset		15° Jib Offset		25° Jib Offset	
ft	m	kips	mt	kips	mt	kips	mt	ft	m	kips	mt	kips	mt	kips	mt	ft	m	kips	mt	kips	mt	kips	mt
60	18.50	42.1	19.1					60	18.50	41.0	18.6					60	18.50	38.5	17.5				
70	21.59	38.6	17.5					70	21.59	38.4	17.4					70	21.59	38	17.2				
80	24.67	37.1	16.8	29.0	13.2			80	24.67	37.1	16.8	29.8	13.5			80	24.67	36.8	16.7	30.6	13.9		
90	27.76	35.6	16.2	26.4	12.0			90	27.76	35.8	16.2	27.3	12.4			90	27.76	35.6	16.2	28.1	12.8		
100	30.84	33.2	15.1	24.3	11.0	17.7	8.0	100	30.84	34.5	15.7	25.2	11.4	18.1	8.2	100	30.84	34.5	15.7	26.0	11.8	18.4	8.4
110	33.92	30.2	13.7	22.4	10.2	16.5	7.5	110	33.92	32.1	14.6	23.3	10.6	16.9	7.7	110	33.92	33.4	15.2	24.2	11.0	17.3	7.9
120	37.01	27.6	12.5	20.8	9.4	15.5	7.0	120	37.01	29.5	13.4	21.7	9.8	15.9	7.2	120	37.01	31.2	14.2	22.6	10.3	16.3	7.4
130	40.09	25.4	11.5	19.4	8.8	14.5	6.6	130	40.09	27.2	12.3	20.3	9.2	15.0	6.8	130	40.09	28.8	13.1	21.2	9.6	15.4	7.0
140	43.18	23.5	10.7	18.1	8.2	13.7	6.2	140	43.18	25.2	11.4	19.0	8.6	14.2	6.4	140	43.18	26.8	12.2	19.9	9.0	14.6	6.6
150	46.26	21.9	9.9	17.0	7.7	13.0	5.9	150	46.26	23.4	10.6	17.9	8.1	13.5	6.1	150	46.26	24.9	11.3	18.7	8.5	13.9	6.3
160	49.34	20.4	9.3	16.0	7.3	12.3	5.6	160	49.34	21.9	9.9	16.9	7.7	12.8	5.8	160	49.34	23.3	10.6	17.7	8.0	13.2	6.0
170	52.43	19.1	8.7	15.1	6.9	11.7	5.3	170	52.43	20.5	9.3	16.0	7.3	12.2	5.5	170	52.43	21.9	9.9	16.8	7.6	12.6	5.7
180	55.51	17.9	8.1	14.3	6.5	11.2	5.1	180	55.51	19.3	8.8	15.2	6.9	11.6	5.3	180	55.51	20.6	9.3	15.9	7.2	12.1	5.5
190	58.60	16.9	7.7	13.6	6.2	10.7	4.9	190	58.60	18.2	8.3	14.4	6.5	11.1	5.0	190	58.60	19.4	8.8	15.2	6.9	11.6	5.3
200	61.68	15.9	7.2	13.0	5.9	10.2	4.6	200	61.68	17.2	7.8	13.7	6.2	10.7	4.9	200	61.68	18.4	8.4	14.5	6.6	11.1	5.0
210	64.76	15.1	6.9	12.4	5.6	9.9	4.5	210	64.76	16.3	7.4	13.1	5.9	10.3	4.7	210	64.76	17.4	7.9	13.8	6.3	10.7	4.9
220	67.85	14.3	6.5	11.9	5.4	9.5	4.3	220	67.85	15.5	7.0	12.6	5.7	9.9	4.5	220	67.85	16.6	7.5	13.2	6.0	10.3	4.7
230	70.93	13.7	6.2	11.4	5.2	9.3	4.2	230	70.93	14.7	6.7	12.1	5.5	9.6	4.4	230	70.93	15.8	7.2	12.7	5.8	10.0	4.5
240	74.02	13.0	5.9	11.0	5.0	9.1	4.1	240	74.02	14.0	6.4	11.6	5.3	9.3	4.2	240	74.02	15.1	6.9	12.2	5.5	9.7	4.4
250	77.10	12.5	5.7	10.7	4.9			250	77.10	13.4	6.1	11.2	5.1	9.1	4.1	250	77.10	14.4	6.5	11.8	5.4	9.4	4.3
260	80.18	12.1	5.5					260	80.18	12.9	5.9	10.9	4.9	9.0	4.1	260	80.18	13.8	6.3	11.4	5.2	9.2	4.2
								270	83.27	12.4	5.6	10.6	4.8			270	83.27	12.7	5.8	11.1	5.0	9.0	4.1
								280	86.35	12.0	5.4					280	86.35	11.5	5.2	10.8	4.9	8.9	4.0
																290	89.44	10.1	4.6	10.6	4.8		
																300	92.52	8.6	3.9				

Load Chart With Heavy Duty Boom & Jib – Extended Gauge – 360° Rotation – ABC + A [221,100 75,000 lb (100.3 + 34.0kg)] Ctw																							
120 ft (37.01m) Jib Length																							
200 ft (61.68m) Boom Length								220 ft (67.85m) Boom Length								240 ft (74.02m) Boom Length							
Load Radius		5° Jib Offset		15° Jib Offset		25° Jib Offset		Load Radius		5° Jib Offset		15° Jib Offset		25° Jib Offset		Load Radius		5° Jib Offset		15° Jib Offset		25° Jib Offset	
ft	m	kips	mt	kips	mt	kips	mt	ft	m	kips	mt	kips	mt	kips	mt	ft	m	kips	mt	kips	mt	kips	mt
70	21.59	35.0	15.9					70	21.59	31.5	14.3					70	21.59	28.2	12.8				
80	24.67	34.7	15.7					80	24.67	31.2	14.2					80	24.67	27.7	12.6				
90	27.76	34.5	15.7	28.9	13.1			90	27.76	30.9	14.0	28.2	12.8			90	27.76	27.3	12.4	25.3	11.5		
100	30.84	34.1	15.5	26.8	12.2	18.7	8.5	100	30.84	30.5	13.8	27.5	12.5			100	30.84	26.9	12.2	24.8	11.3		
110	33.92	33.1	15.0	25.0	11.3	17.6	8.0	110	33.92	30.1	13.7	25.7	11.7	17.9	8.1	110	33.92	26.4	12	24.4	11.1	18.2	8.3
120	37.01	32.1	14.6	23.4	10.6	16.7	7.6	120	37.01	29.8	13.5	24.1	10.9	17.0	7.7	120	37.01	26.0	11.8	23.9	10.8	17.3	7.9
130	40.09	30.5	13.8	21.9	9.9	15.8	7.2	130	40.09	29.4	13.3	22.7	10.3	16.1	7.3	130	40.09	25.5	11.6	23.4	10.6	16.4	7.4
140	43.18	28.3	12.8	20.7	9.4	15.0	6.8	140	43.18	29.0	13.2	21.4	9.7	15.4	7.0	140	43.18	25.1	11.4	22.1	10.0	15.7	7.1
150	46.26	26.4	12.0	19.5	8.9	14.3	6.5	150	46.26	27.8	12.6	20.2	9.2	14.6	6.6	150	46.26	24.6	11.2	20.9	9.5	15.0	6.8
160	49.34	24.7	11.2	18.5	8.4	13.6	6.2	160	49.34	26.1	11.8	19.2	8.7	14.0	6.4	160	49.34	24.2	11.0	19.9	9.0	14.3	6.5
170	52.43	23.2	10.5	17.5	7.9	13.0	5.9	170	52.43	24.5	11.1	18.2	8.3	13.4	6.1	170	52.43	23.8	10.8	18.9	8.6	13.8	6.3
180	55.51	21.9	9.9	16.7	7.6	12.5	5.7	180	55.51	23.1	10.5	17.4	7.9	12.9	5.9	180	55.51	23.4	10.6	18.0	8.2	13.2	6.0
190	58.60	20.7	9.4	15.9	7.2	12	5.4	190	58.60	21.9	9.9	16.6	7.5	12.4	5.6	190	58.60	22.3	10.1	17.2	7.8	12.7	5.8
200	61.68	19.6	8.9	15.2	6.9	11.5	5.2	200	61.68	20.7	9.4	15.8	7.2	11.9	5.4	200	61.68	20.0	9.1	16.5	7.5	12.2	5.5
210	64.76	18.6	8.4	14.5	6.6	11.1	5.0	210	64.76	19.2	8.7	15.2	6.9	11.5	5.2	210	64.76	18.0	8.2	15.8	7.2	11.8	5.4
220	67.85	17.6	8.0	13.9	6.3	10.7	4.9	220	67.85	17.4	7.9	14.5	6.6	11.1	5.0	220	67.85	16.2	7.4	15.2	6.9	11.4	5.2
230	70.93	16.8	7.6	13.4	6.1	10.4	4.7	230	70.93	15.7	7.1	14.0	6.4	10.7	4.9	230	70.93	14.6	6.6	14.6	6.6	11.0	5.0
240	74.02	15.4	7.0	12.9	5.9	10.0	4.5	240	74.02	14.2	6.4	13.4	6.1	10.4	4.7	240	74.02	12.9	5.9	14.0	6.4	10.7	4.9
250	77.10	14.0	6.4	12.4	5.6	9.7	4.4	250	77.10	12.9	5.9	13.0	5.9	10.1	4.6	250	77.10	11.2	5.1	12.5	5.7	10.4	4.7
260	80.18	12.8	5.8	12.0	5.4	9.5	4.3	260	80.18	11.4	5.2	12.3	5.6	9.8	4.5	260	80.18	9.7	4.4	10.9	4.9	10.1	4.6
270	83.27	11.5	5.2	11.6	5.3	9.3	4.2	270	83.27	9.9	4.5	10.9	4.9	9.6	4.4	270	83.27	8.3	3.8	9.4	4.3	9.8	4.5
280	86.35	10.1	4.6	10.9	4.9	9.1	4.1	280	86.35	8.6	3.9	9.5	4.3	9.3	4.2	280	86.35	6.9	3.1	8.0	3.6	8.8	4.0
290	89.44	8.8	4.0	9.4	4.3	9.0	4.1	290	89.44	7.3	3.3	7.8	3.5	8.4	3.8	290	89.44	5.7	2.6	6.6	3.0	7.4	3.4
300	92.52	7.5	3.4	7.6	3.5	8.0	3.6	300	92.52	6.1	2.8	6.5	3.0	7.0	3.2	300	92.52	4.5	2.0	5.4	2.5	6.0	2.7
310	95.60	6.2	2.8	6.7	3.0			310	95.60	4.9	2.2	5.1	2.3	5.6	2.5	310	95.60	3.4	1.5	4.2	1.9	4.8	2.2
320	98.69	4.9	2.2					320	98.69	3.8	1.7	4.3	2.0			320	98.69	2.3	1.0	3.0	1.4	3.5	1.6
								330	101.77	2.6	1.2	3.0	1.4			330	101.77					2.3	1.0



Load Chart With Heavy Duty Boom & Jib – Extended Gauge – 360° Rotation – ABC + A [221,100 75,000 lb (100.3 + 34.0kg)] Ctwt																							
140 ft (43.18m) Jib Length																							
70 ft (21.59m) Boom Length								100 ft (30.84m) Boom Length								120 ft (37.01m) Boom Length							
Load Radius		5° Jib Offset		15° Jib Offset		25° Jib Offset		Load Radius		5° Jib Offset		15° Jib Offset		25° Jib Offset		Load Radius		5° Jib Offset		15° Jib Offset		25° Jib Offset	
ft	m	kips	mt	kips	mt	kips	mt	ft	m	kips	mt	kips	mt	kips	mt	ft	m	kips	mt	kips	mt	kips	mt
50	15.42	32.9	14.9					60	18.50	31.8	14.4					60	18.50	31.4	14.2				
60	18.50	31.7	14.4					70	21.59	30.5	13.8					70	21.59	30.9	14.0				
70	21.59	29.7	13.5	24.8	11.3			80	24.67	28.9	13.1	23.2	10.5			80	24.67	29.4	13.3	24.0	10.9		
80	24.67	27.8	12.6	22.0	10.0			90	27.76	27.3	12.4	21.0	9.5			90	27.76	27.9	12.7	21.7	9.8		
90	27.76	25.0	11.3	19.6	8.9			100	30.84	25.0	11.3	19.0	8.6	14.1	6.4	100	30.84	26.6	12.1	19.8	9.0	14.4	6.5
100	30.84	22.3	10.1	17.6	8.0	13.5	6.1	110	33.92	22.6	10.3	17.4	7.9	13.0	5.9	110	33.92	24.2	11.0	18.2	8.3	13.4	6.1
110	33.92	20.0	9.1	16.0	7.3	12.3	5.6	120	37.01	20.6	9.3	15.9	7.2	12.0	5.4	120	37.01	22.1	10.0	16.8	7.6	12.4	5.6
120	37.01	18.1	8.2	14.6	6.6	11.3	5.1	130	40.09	18.8	8.5	14.7	6.7	11.1	5.0	130	40.09	20.3	9.2	15.5	7.0	11.5	5.2
130	40.09	16.5	7.5	13.3	6.0	10.4	4.7	140	43.18	17.3	7.9	13.6	6.2	10.3	4.7	140	43.18	18.7	8.5	14.4	6.5	10.8	4.9
140	43.18	15.1	6.9	12.3	5.6	9.6	4.4	150	46.26	15.9	7.2	12.7	5.8	9.7	4.4	150	46.26	17.3	7.9	13.4	6.1	10.1	4.6
150	46.26	13.9	6.3	11.3	5.1	8.9	4.0	160	49.34	14.8	6.7	11.8	5.4	9.0	4.1	160	49.34	16.0	7.3	12.6	5.7	9.5	4.3
160	49.34	12.8	5.8	10.5	4.8	8.3	3.8	170	52.43	13.7	6.2	11.0	5.0	8.5	3.9	170	52.43	14.9	6.8	11.8	5.4	8.9	4.0
170	52.43	11.9	5.4	9.8	4.5	7.7	3.5	180	55.51	12.8	5.8	10.3	4.7	8.0	3.6	180	55.51	14.0	6.4	11.1	5.0	8.4	3.8
180	55.51	11.0	5.0	9.2	4.2	7.2	3.3	190	58.60	12.0	5.4	9.7	4.4	7.6	3.5	190	58.60	13.1	5.9	10.4	4.7	8.0	3.6
190	58.60	10.3	4.7	8.6	3.9	6.9	3.1	200	61.68	11.2	5.1	9.2	4.2	7.2	3.3	200	61.68	12.3	5.6	9.9	4.5	7.6	3.5
200	61.68	9.7	4.4	8.1	3.7	6.5	3.0	210	64.76	10.6	4.8	8.7	4.0	6.8	3.1	210	64.76	11.6	5.3	9.4	4.3	7.2	3.3
210	64.76	9.1	4.1	7.8	3.5			220	67.85	10.0	4.5	8.3	3.8	6.6	3.0	220	67.85	10.9	4.9	8.9	4.0	6.9	3.1
								230	70.93	9.5	4.3	7.9	3.6	6.4	2.9	230	70.93	10.4	4.7	8.5	3.9	6.7	3.0
								240	74.02	9.1	4.1	7.7	3.5			240	74.02	9.8	4.5	8.1	3.7	6.5	3.0
																250	77.10	9.4	4.3	7.9	3.6	6.3	2.9
																260	80.18	9.0	4.1	7.7	3.5		
140 ft (43.18m) Boom Length								160 ft (49.34m) Boom Length								180 ft (55.51m) Boom Length							
Load Radius		5° Jib Offset		15° Jib Offset		25° Jib Offset		Load Radius		5° Jib Offset		15° Jib Offset		25° Jib Offset		Load Radius		5° Jib Offset		15° Jib Offset		25° Jib Offset	
ft	m	kips	mt	kips	mt	kips	mt	ft	m	kips	mt	kips	mt	kips	mt	ft	m	kips	mt	kips	mt	kips	mt
60	18.50	30.8	14					60	18.50	30.1	13.7					70	21.59	28.9	13.1				
70	21.59	30.4	13.8					70	21.59	29.7	13.5					80	24.67	28.6	13.0				
80	24.67	29.7	13.5	24.6	11.2			80	24.67	29.4	13.3					90	27.76	28.4	12.9	23.7	10.8		
90	27.76	28.3	12.8	22.4	10.2			90	27.76	28.6	13.0	23.1	10.5			100	30.84	27.5	12.5	21.9	9.9		
100	30.84	27.1	12.3	20.6	9.3			100	30.84	27.4	12.4	21.2	9.6			110	33.92	26.5	12.0	20.3	9.2	14.2	6.4
110	33.92	25.8	11.7	18.9	8.6	13.7	6.2	110	33.92	26.3	11.9	19.6	8.9	13.9	6.3	120	37.01	25.5	11.6	18.9	8.6	13.3	6.0
120	37.01	23.6	10.7	17.5	7.9	12.7	5.8	120	37.01	25.0	11.3	18.1	8.2	13.0	5.9	130	40.09	24.4	11.1	17.6	8.0	12.5	5.7
130	40.09	21.7	9.8	16.3	7.4	11.9	5.4	130	40.09	23.1	10.5	17.0	7.7	12.2	5.5	140	43.18	22.6	10.3	16.5	7.5	11.8	5.4
140	43.18	20.0	9.1	15.2	6.9	11.2	5.1	140	43.18	21.3	9.7	15.9	7.2	11.5	5.2	150	46.26	21.0	9.5	15.5	7.0	11.2	5.1
150	46.26	18.6	8.4	14.2	6.4	10.5	4.8	150	46.26	19.8	9.0	14.9	6.8	10.9	4.9	160	49.34	19.6	8.9	14.6	6.6	10.6	4.8
160	49.34	17.3	7.9	13.3	6.0	9.9	4.5	160	49.34	18.5	8.4	14.0	6.4	10.3	4.7	170	52.43	18.4	8.4	13.8	6.3	10.0	4.5
170	52.43	16.1	7.3	12.5	5.7	9.3	4.2	170	52.43	17.2	7.8	13.2	6.0	9.7	4.4	180	55.51	17.2	7.8	13.0	5.9	9.6	4.4
180	55.51	15.1	6.9	11.8	5.4	8.8	4.0	180	55.51	16.2	7.4	12.4	5.6	9.2	4.2	190	58.60	16.2	7.4	12.4	5.6	9.1	4.1
190	58.60	14.1	6.4	11.1	5.0	8.4	3.8	190	58.60	15.2	6.9	11.8	5.4	8.8	4.0	200	61.68	15.3	6.9	11.7	5.3	8.7	4.0
200	61.68	13.3	6.0	10.5	4.8	8	3.6	200	61.68	14.3	6.5	11.1	5.0	8.4	3.8	210	64.76	14.5	6.6	11.2	5.1	8.3	3.8
210	64.76	12.5	5.7	10	4.5	7.6	3.5	210	64.76	13.5	6.1	10.6	4.8	8.0	3.6	220	67.85	13.7	6.2	10.6	4.8	8.0	3.6
220	67.85	11.9	5.4	9.5	4.3	7.3	3.3	220	67.85	12.8	5.8	10.1	4.6	7.6	3.5	230	70.93	13.0	5.9	10.2	4.6	7.6	3.5
230	70.93	11.2	5.1	9.1	4.1	7.0	3.2	230	70.93	12.1	5.5	9.6	4.4	7.3	3.3	240	74.02	12.3	5.6	9.7	4.4	7.4	3.4
240	74.02	10.7	4.9	8.7	4.0	6.7	3.0	240	74.02	11.5	5.2	9.2	4.2	7.1	3.2	250	77.10	11.8	5.4	9.3	4.2	7.1	3.2
250	77.10	10.2	4.6	8.3	3.8	6.5	3.0	250	77.10	11.0	5.0	8.8	4.0	6.8	3.1	260	80.18	11.2	5.1	9.0	4.1	6.9	3.1
260	80.18	9.7	4.4	8.0	3.6	6.4	2.9	260	80.18	10.5	4.8	8.5	3.9	6.6	3.0	270	83.27	10.7	4.9	8.6	3.9	6.7	3.0
270	83.27	9.3	4.2	7.8	3.5			270	83.27	10.0	4.5	8.2	3.7	6.4	2.9	280	86.35	10.3	4.7	8.3	3.8	6.5	3.0
280	86.35	9.0	4.1					280	86.35	9.6	4.4	7.9	3.6	6.3	2.9	290	89.44	9.8	4.5	8.1	3.7	6.4	2.9
								290	89.44	9.2	4.2	7.7	3.5			300	92.52	9.5	4.3	7.8	3.5	6.3	2.9
								300	92.52	8.9	4.0					310	95.60	8.2	3.7	7.7	3.5		
																320	98.69	6.9	3.1				

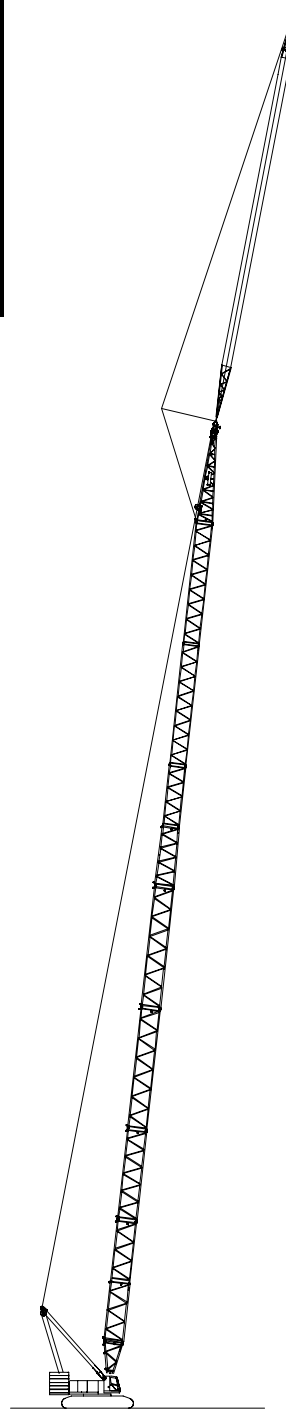
Load Chart With Heavy Duty Boom & Jib – Extended Gauge – 360° Rotation – ABC + A [221,100 75,000 lb (100.3 + 34.0kg)] Cwt																							
140 ft (43.18m) Jib Length																							
200 ft (61.68m) Boom Length								220 ft (67.85m) Boom Length								240 ft (74.02m) Boom Length							
Load Radius		5° Jib Offset		15° Jib Offset		25° Jib Offset		Load Radius		5° Jib Offset		15° Jib Offset		25° Jib Offset		Load Radius		5° Jib Offset		15° Jib Offset		25° Jib Offset	
ft	m	kips	mt	kips	mt	kips	mt	ft	m	kips	mt	kips	mt	kips	mt	ft	m	kips	mt	kips	mt	kips	mt
70	21.59	28.0	12.7					70	21.59	26.1	11.8					80	24.67	23.5	10.7				
80	24.67	27.7	12.6					80	24.67	25.8	11.7					90	27.76	23.1	10.5				
90	27.76	27.5	12.5	24.2	11.0			90	27.76	25.5	11.6					100	30.84	22.8	10.3	20.8	9.4		
100	30.84	27.2	12.3	22.4	10.2			100	30.84	25.3	11.5	22.7	10.3			110	33.92	22.5	10.2	20.4	9.3		
110	33.92	26.5	12.0	20.9	9.5	14.4	6.5	110	33.92	25.0	11.3	21.4	9.7			120	37.01	22.1	10.0	20.1	9.1	14.0	6.4
120	37.01	25.5	11.6	19.5	8.9	13.6	6.2	120	37.01	24.7	11.2	20.0	9.1	13.8	6.3	130	40.09	21.8	9.9	19.3	8.8	13.3	6.0
130	40.09	24.7	11.2	18.2	8.3	12.8	5.8	130	40.09	24.4	11.1	18.8	8.5	13.0	5.9	140	43.18	21.4	9.7	18.2	8.3	12.6	5.7
140	43.18	23.8	10.8	17.1	7.8	12.1	5.5	140	43.18	23.8	10.8	17.7	8.0	12.4	5.6	150	46.26	21.1	9.6	17.2	7.8	12	5.4
150	46.26	22.2	10.1	16.1	7.3	11.5	5.2	150	46.26	23.0	10.4	16.7	7.6	11.7	5.3	160	49.34	20.8	9.4	16.3	7.4	11.4	5.2
160	49.34	20.7	9.4	15.2	6.9	10.9	4.9	160	49.34	21.8	9.9	15.8	7.2	11.2	5.1	170	52.43	20.4	9.3	15.4	7.0	10.9	4.9
170	52.43	19.4	8.8	14.4	6.5	10.4	4.7	170	52.43	20.5	9.3	14.9	6.8	10.6	4.8	180	55.51	20.1	9.1	14.7	6.7	10.4	4.7
180	55.51	18.3	8.3	13.6	6.2	9.9	4.5	180	55.51	19.3	8.8	14.2	6.4	10.1	4.6	190	58.60	19.1	8.7	14	6.4	10.0	4.5
190	58.60	17.2	7.8	12.9	5.9	9.4	4.3	190	58.60	18.2	8.3	13.5	6.1	9.7	4.4	200	61.68	18.1	8.2	13.3	6.0	9.6	4.4
200	61.68	16.2	7.4	12.3	5.6	9.0	4.1	200	61.68	17.2	7.8	12.8	5.8	9.3	4.2	210	64.76	17.2	7.8	12.7	5.8	9.2	4.2
210	64.76	15.4	7.0	11.7	5.3	8.6	3.9	210	64.76	16.3	7.4	12.2	5.5	8.9	4.0	220	67.85	16.3	7.4	12.2	5.5	8.8	4.0
220	67.85	14.6	6.6	11.2	5.1	8.3	3.8	220	67.85	15.4	7.0	11.6	5.3	8.5	3.9	230	70.93	14.8	6.7	11.7	5.3	8.5	3.9
230	70.93	13.8	6.3	10.7	4.9	7.9	3.6	230	70.93	14.7	6.7	11.2	5.1	8.2	3.7	240	74.02	13.3	6.0	11.2	5.1	8.2	3.7
240	74.02	13.2	6.0	10.2	4.6	7.6	3.5	240	74.02	14	6.4	10.7	4.9	7.9	3.6	250	77.10	11.6	5.3	10.7	4.9	7.9	3.6
250	77.10	12.5	5.7	9.8	4.5	7.4	3.4	250	77.10	13.1	5.9	10.3	4.7	7.6	3.5	260	80.18	10.1	4.6	10.3	4.7	7.6	3.5
260	80.18	12.0	5.4	9.4	4.3	7.1	3.2	260	80.18	11.8	5.4	9.9	4.5	7.4	3.4	270	83.27	8.7	4.0	9.9	4.5	7.4	3.4
270	83.27	11.5	5.2	9.1	4.1	6.9	3.1	270	83.27	10.3	4.7	9.5	4.3	7.1	3.2	280	86.35	7.3	3.3	8.6	3.9	7.2	3.3
280	86.35	10.6	4.8	8.7	4.0	6.7	3.0	280	86.35	9.0	4.1	9.2	4.2	6.9	3.1	290	89.44	6.1	2.8	7.2	3.3	7.0	3.2
290	89.44	9.3	4.2	8.5	3.9	6.5	3.0	290	89.44	7.7	3.5	8.7	4.0	6.7	3.0	300	92.52	4.9	2.2	6.0	2.7	6.8	3.1
300	92.52	8.1	3.7	8.2	3.7	6.4	2.9	300	92.52	6.5	3.0	7.5	3.4	6.6	3.0	310	95.60	3.8	1.7	4.8	2.2	5.6	2.5
310	95.60	6.9	3.1	7.6	3.5	6.3	2.9	310	95.60	5.4	2.5	6.3	2.9	6.4	2.9	320	98.69	2.8	1.3	3.7	1.7	4.4	2.0
320	98.69	5.8	2.6	6.4	2.9	6.2	2.8	320	98.69	4.3	2.0	4.7	2.1	5.3	2.4								
330	101.77	4.6	2.1	5.1	2.3			330	101.77	3.3	1.5	3.7	1.7	4.1	1.9								
340	104.86	3.5	1.6					340	104.86	2.3	1.0	2.9	1.3										

## Jib Make-Up With Long Range Boom

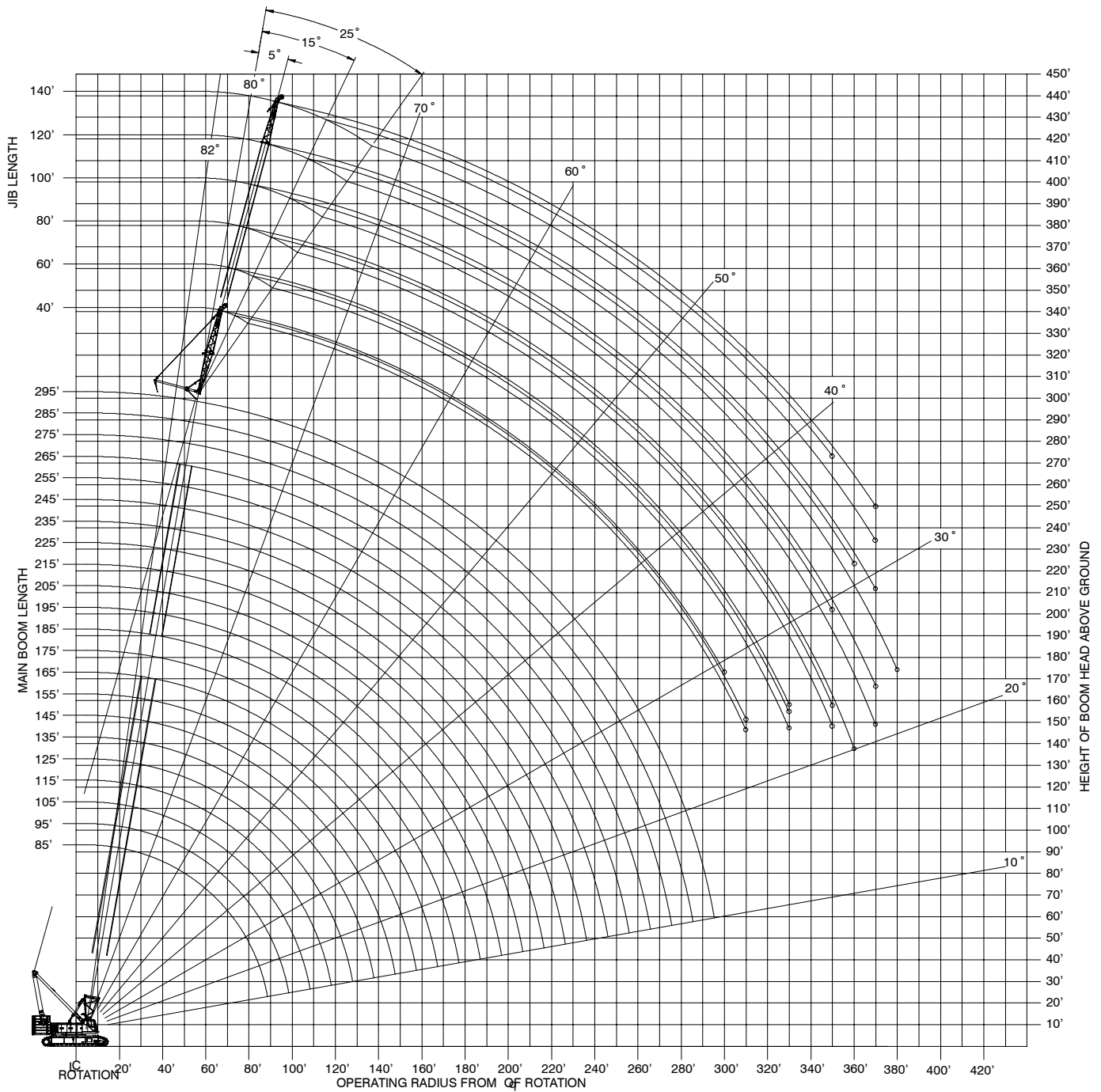
Jib Length ft (m)	20 ft (6.10m) "K" Jib Base	20 ft (6.10m) "EF" Jib Extensions	20 ft (6.10m) "E" Jib Top
40 (12.19)	1		1
60 (18.29)	1	1	1
80 (24.38)	1	2	1
100 (30.48)	1	3	1
120 (36.58)	1	4	1
140 (42.67)	1	5	1

### Notes:

- Capacities shown are in kips/metric tons (1 kip = 1,000 lb / 1 metric ton = 0.45 kips) and are not more than 75% of the tipping loads with the crane standing level on a firm supporting surface.
- A deduction must be made from these capacities for the weight of the main boom hook block or hook ball, jib hook block or hook ball, slings, grapples, load weighing devices, etc. When using main hook while jib is attached, reduce capacities by values shown in Crane Rating Manual. See Operator's Manual for all limitations when raising or lowering attachment.
- The capacities in the shaded areas are based on structural strength. The capacities in the non-shaded areas are based on stability ratings.
- Load ratings are based on freely suspended loads and make no allowances for such factors as the effect of the wind, ground conditions, and operating speeds. The operator shall therefore reduce load ratings in order to take these conditions into account. Refer to the Crane Rating Manual for Wind Speed Restrictions.
- These capacities are for ABC+A counterweight.
- These capacities are for 360° working areas.
- These capacities are for 40–140 ft (12.19–42.67m) jib lengths only.
- The jib cannot be used on boom lengths over 295 ft (89.92m).
- The least stable rated condition is over the side.
- These capacities are in compliance with ASME/ANSI B30.5 at date of manufacture.
- These capacities apply only to the crane as originally manufactured and normally equipped by Link-Belt Construction Equipment Company.



# Working Range Diagram With Long Range Boom – Extended Gauge



**Notes:**

1. Boom geometry shown is for unloaded condition and crane standing level on firm supporting surface. Boom deflection, subsequent radius, and boom angle change must be accounted for when applying load to hook.

# Load Chart With Long Range Boom – Extended Gauge

This material is supplied for reference use only. Operator must refer to in-cab Crane Rating Manual and Operator's Manual to determine allowable crane lifting capacities and assembly and operating procedures.

Load Chart With Long Range Boom & Jib – Extended Gauge – 360° Rotation – ABC + A [221,100 75,000 lb (100.3 + 34.0kg)] Cwt																							
40 ft (12.34m) Jib Length																							
85 ft (26.21m) Boom Length								105 ft (32.38m) Boom Length								125 ft (38.55m) Boom Length							
Load Radius		5° Jib Offset		15° Jib Offset		25° Jib Offset		Load Radius		5° Jib Offset		15° Jib Offset		25° Jib Offset		Load Radius		5° Jib Offset		15° Jib Offset		25° Jib Offset	
ft	m	kips	mt	kips	mt	kips	mt	ft	m	kips	mt	kips	mt	kips	mt	ft	m	kips	mt	kips	mt	kips	mt
30	9.25	98.0	44.5					30	9.25	97.6	44.3					35	10.79	89.0	40.4				
35	10.79	89.0	40.4	69.3	31.4			35	10.79	88.9	40.3					40	12.34	82.1	37.2	68.1	30.9		
40	12.34	81.6	37.0	69.3	31.4	42.4	19.2	40	12.34	81.7	37.1	68.7	31.2			45	13.88	77.1	35.0	63.9	29.0	42.4	19.2
45	13.88	75.9	34.4	65.3	29.6	42.4	19.2	45	13.88	76.4	34.7	64.4	29.2	42.4	19.2	50	15.42	71.8	32.6	60.2	27.3	42.4	19.2
50	15.42	70.5	32.0	61.3	27.8	42.4	19.2	50	15.42	71.0	32.2	60.5	27.4	42.4	19.2	55	16.96	67.2	30.5	56.9	25.8	42.4	19.2
55	16.96	65.8	29.8	57.7	26.2	42.4	19.2	55	16.96	66.4	30.1	57.1	25.9	42.4	19.2	60	18.50	63.1	28.6	54.0	24.5	42.4	19.2
60	18.50	61.7	28.0	54.6	24.8	42.4	19.2	60	18.50	62.2	28.2	54.1	24.5	42.4	19.2	65	20.05	59.5	27.0	51.3	23.3	42.4	19.2
65	20.05	58.1	26.4	51.8	23.5	42.4	19.2	65	20.05	58.6	26.6	51.4	23.3	42.4	19.2	70	21.59	56.3	25.5	48.9	22.2	42.4	19.2
70	21.59	54.9	24.9	49.3	22.4	42.4	19.2	70	21.59	55.4	25.1	48.9	22.2	42.4	19.2	75	23.13	53.4	24.2	46.8	21.2	41.6	18.9
75	23.13	52.1	23.6	47.1	21.4	42.4	19.2	75	23.13	52.5	23.8	46.7	21.2	42.1	19.1	80	24.67	50.8	23.0	44.8	20.3	40.1	18.2
80	24.67	49.5	22.5	45.0	20.4	41.4	18.8	80	24.67	50.0	22.7	44.7	20.3	40.5	18.4	85	26.21	48.4	22.0	43.0	19.5	39.3	17.8
85	26.21	47.2	21.4	43.2	19.6	40.1	18.2	85	26.21	47.6	21.6	42.9	19.5	39.5	17.9	90	27.76	46.2	21.0	41.3	18.7	38.0	17.2
90	27.76	45.1	20.5	41.5	18.8	38.8	17.6	90	27.76	45.5	20.6	41.2	18.7	38.2	17.3	100	30.84	42.5	19.3	39.1	17.7	35.6	16.1
100	30.84	41.5	18.8	38.9	17.6	36.4	16.5	100	30.84	41.8	19.0	38.8	17.6	35.8	16.2	110	33.92	40.1	18.2	36.5	16.6	33.6	15.2
110	33.92	38.8	17.6	36.4	16.5	34.5	15.6	110	33.92	39.2	17.8	36.2	16.4	33.8	15.3	120	37.01	37.2	16.9	34.2	15.5	31.8	14.4
120	37.01	36.1	16.4	34.3	15.6	33.1	15.0	120	37.01	36.5	16.6	34.0	15.4	32.1	14.6	130	40.09	34.7	15.7	32.2	14.6	30.3	13.7
130	40.09	34.0	15.4	32.9	14.9			130	40.09	34.1	15.5	32.1	14.6	30.7	13.9	140	43.18	32.6	14.8	30.5	13.8	29.0	13.2
								140	43.18	32.0	14.5	30.5	13.8	29.6	13.4	150	46.26	30.7	13.9	29.0	13.2	27.9	12.7
								150	46.26	30.3	13.7					160	49.34	29.0	13.2	27.7	12.6	27.0	12.2
																170	52.43	27.5	12.5				
145 ft (44.72m) Boom Length								165 ft (50.89m) Boom Length								185 ft (57.05m) Boom Length							
Load Radius		5° Jib Offset		15° Jib Offset		25° Jib Offset		Load Radius		5° Jib Offset		15° Jib Offset		25° Jib Offset		Load Radius		5° Jib Offset		15° Jib Offset		25° Jib Offset	
ft	m	kips	mt	kips	mt	kips	mt	ft	m	kips	mt	kips	mt	kips	mt	ft	m	kips	mt	kips	mt	kips	mt
35	10.79	88.9	40.3					40	12.34	81.9	37.1					45	13.88	76.7	34.8				
40	12.34	82.2	37.3					45	13.88	77.5	35.2	63.2	28.7			50	15.42	72.2	32.7	59.3	26.9		
45	13.88	77.6	35.2	63.6	28.8			50	15.42	72.6	32.9	59.8	27.1			55	16.96	68.1	30.9	56.4	25.6	42.4	19.2
50	15.42	72.4	32.8	60.1	27.3	42.4	19.2	55	16.96	68.3	31.0	56.7	25.7	42.4	19.2	60	18.50	64.4	29.2	53.7	24.4	42.4	19.2
55	16.96	67.9	30.8	56.9	25.8	42.4	19.2	60	18.50	64.4	29.2	54.0	24.5	42.4	19.2	65	20.05	61.0	27.7	51.3	23.3	42.4	19.2
60	18.50	63.9	29.0	54.0	24.5	42.4	19.2	65	20.05	60.9	27.6	51.4	23.3	42.4	19.2	70	21.59	57.9	26.3	49.1	22.3	42.4	19.2
65	20.05	60.3	27.4	51.4	23.3	42.4	19.2	70	21.59	57.7	26.2	49.2	22.3	42.4	19.2	75	23.13	55.1	25.0	47.0	21.3	40.9	18.6
70	21.59	57.1	25.9	49.1	22.3	42.4	19.2	75	23.13	54.8	24.9	47.0	21.3	41.2	18.7	80	24.67	52.6	23.9	45.1	20.5	39.8	18.1
75	23.13	54.2	24.6	46.9	21.3	41.4	18.8	80	24.67	52.2	23.7	45.1	20.5	40.3	18.3	85	26.21	50.2	22.8	43.4	19.7	39.0	17.7
80	24.67	51.6	23.4	45.0	20.4	40.0	18.1	85	26.21	49.8	22.6	43.3	19.6	39.2	17.8	90	27.76	48.1	21.8	41.7	18.9	37.8	17.1
85	26.21	49.2	22.3	43.2	19.6	39.2	17.8	90	27.76	47.6	21.6	41.7	18.9	37.9	17.2	100	30.84	44.2	20.0	39.9	18.1	35.5	16.1
90	27.76	47.0	21.3	41.5	18.8	37.9	17.2	100	30.84	43.8	19.9	39.7	18.0	35.6	16.1	110	33.92	40.9	18.6	37.2	16.9	33.4	15.1
100	30.84	43.2	19.6	39.4	17.9	35.6	16.1	110	33.92	40.5	18.4	37.1	16.8	33.5	15.2	120	37.01	39.2	17.8	35.0	15.9	31.6	14.3
110	33.92	40.0	18.1	36.8	16.7	33.6	15.2	120	37.01	38.7	17.6	34.8	15.8	31.7	14.4	130	40.09	36.6	16.6	32.9	14.9	30.0	13.6
120	37.01	38.0	17.2	34.5	15.6	31.8	14.4	130	40.09	36.1	16.4	32.7	14.8	30.1	13.7	140	43.18	34.3	15.6	31.1	14.1	28.6	13.0
130	40.09	35.5	16.1	32.5	14.7	30.2	13.7	140	43.18	33.8	15.3	30.9	14.0	28.7	13.0	150	46.26	32.3	14.7	29.5	13.4	27.3	12.4
140	43.18	33.2	15.1	30.7	13.9	28.8	13.1	150	46.26	31.8	14.4	29.3	13.3	27.4	12.4	160	49.34	30.5	13.8	28.0	12.7	26.2	11.9
150	46.26	31.3	14.2	29.1	13.2	27.6	12.5	160	49.34	30.0	13.6	27.9	12.7	26.3	11.9	170	52.43	28.8	13.1	26.7	12.1	25.1	11.4
160	49.34	29.5	13.4	27.7	12.6	26.5	12.0	170	52.43	28.4	12.9	26.6	12.1	25.3	11.5	180	55.51	27.3	12.4	25.5	11.6	24.2	11.0
170	52.43	28.0	12.7	26.5	12.0	25.6	11.6	180	55.51	27.0	12.2	25.4	11.5	24.4	11.1	190	58.60	25.7	11.7	24.4	11.1	23.3	10.6
180	55.51	26.5	12.0	25.4	11.5			190	58.60	25.6	11.6	24.4	11.1	23.6	10.7	200	61.68	23.6	10.7	23.3	10.6	22.6	10.3
190	58.60	25.3	11.5					200	61.68	24.4	11.1	23.5	10.7			210	64.76	21.6	9.8	21.3	9.7	21.4	9.7
								210	64.76	22.6	10.3					220	67.85	19.8	9.0	19.4	8.8		
																230	70.93	18.2	8.3				

Load Chart With Long Range Boom & Jib – Extended Gauge – 360° Rotation – ABC + A [221,100 75,000 lb (100.3 + 34.0kg)] Cwtw																							
40 ft (12.34m) Jib Length																							
205 ft (63.22m) Boom Length								225 ft (69.39m) Boom Length								255 ft (78.64m) Boom Length							
Load Radius		5° Jib Offset		15° Jib Offset		25° Jib Offset		Load Radius		5° Jib Offset		15° Jib Offset		25° Jib Offset		Load Radius		5° Jib Offset		15° Jib Offset		25° Jib Offset	
ft	m	kips	mt	kips	mt	kips	mt	ft	m	kips	mt	kips	mt	kips	mt	ft	m	kips	mt	kips	mt	kips	mt
45	13.88	65.0	29.5					50	15.42	53.9	24.4					50	15.42	42.1	19.1				
50	15.42	64.6	29.3	58.6	26.6			55	16.96	53.4	24.2	53.0	24.0			55	16.96	41.7	18.9				
55	16.96	64.2	29.1	55.8	25.3			60	18.50	53.0	24.0	52.3	23.7	42.4	19.2	60	18.50	41.2	18.7	40.9	18.6		
60	18.50	63.7	28.9	53.3	24.2	42.4	19.2	65	20.05	52.5	23.8	50.3	22.8	42.4	19.2	65	20.05	38.1	17.3	40.3	18.3	35.9	16.3
65	20.05	60.6	27.5	50.9	23.1	42.4	19.2	70	21.59	52.0	23.6	48.2	21.9	41.6	18.9	70	21.59	37.7	17.1	37.0	16.8	35.4	16.1
70	21.59	57.7	26.2	48.8	22.1	42.1	19.1	75	23.13	51.6	23.4	46.3	21.0	40.1	18.2	75	23.13	37.4	17.0	36.5	16.6	34.9	15.8
75	23.13	55.0	24.9	46.8	21.2	40.6	18.4	80	24.67	51.1	23.2	44.5	20.2	39.6	18.0	80	24.67	37.0	16.8	36.1	16.4	34.4	15.6
80	24.67	52.6	23.9	44.9	20.4	40.1	18.2	85	26.21	49.9	22.6	42.9	19.5	38.3	17.4	85	26.21	36.6	16.6	35.7	16.2	33.9	15.4
85	26.21	50.3	22.8	43.2	19.6	38.8	17.6	90	27.76	47.9	21.7	41.3	18.7	37.1	16.8	90	27.76	36.3	16.5	35.2	16.0	33.5	15.2
90	27.76	48.2	21.9	41.6	18.9	37.5	17.0	100	30.84	44.3	20.1	39.5	17.9	35.0	15.9	100	30.84	35.5	16.1	34.4	15.6	32.6	14.8
100	30.84	44.4	20.1	39.8	18.1	35.3	16.0	110	33.92	41.1	18.6	37.1	16.8	33.0	15.0	110	33.92	34.8	15.8	33.6	15.2	31.8	14.4
110	33.92	41.2	18.7	37.3	16.9	33.3	15.1	120	37.01	39.5	17.9	34.9	15.8	31.3	14.2	120	37.01	34.1	15.5	32.9	14.9	30.5	13.8
120	37.01	39.5	17.9	35.0	15.9	31.5	14.3	130	40.09	37.0	16.8	32.9	14.9	29.7	13.5	130	40.09	33.4	15.1	32.2	14.6	29.0	13.2
130	40.09	36.9	16.7	33.0	15.0	29.9	13.6	140	43.18	34.7	15.7	31.1	14.1	28.3	12.8	140	43.18	32.7	14.8	30.5	13.8	27.7	12.6
140	43.18	34.6	15.7	31.2	14.2	28.5	12.9	150	46.26	32.7	14.8	29.5	13.4	27.0	12.2	150	46.26	32.0	14.5	29.0	13.2	26.4	12.0
150	46.26	32.6	14.8	29.5	13.4	27.2	12.3	160	49.34	30.9	14.0	28.0	12.7	25.8	11.7	160	49.34	29.8	13.5	27.6	12.5	25.3	11.5
160	49.34	30.8	14.0	28.1	12.7	26.0	11.8	170	52.43	28.6	13.0	26.7	12.1	24.7	11.2	170	52.43	26.7	12.1	26.3	11.9	24.2	11.0
170	52.43	29.1	13.2	26.7	12.1	25.0	11.3	180	55.51	25.9	11.7	25.5	11.6	23.8	10.8	180	55.51	24.0	10.9	24.4	11.1	23.2	10.5
180	55.51	27.0	12.2	25.5	11.6	24.0	10.9	190	58.60	23.5	10.7	23.5	10.7	22.9	10.4	190	58.60	21.5	9.8	22.0	10.0	22.3	10.1
190	58.60	24.6	11.2	24.4	11.1	23.1	10.5	200	61.68	21.3	9.7	21.3	9.7	21.6	9.8	200	61.68	19.3	8.8	19.7	8.9	20.1	9.1
200	61.68	22.5	10.2	22.3	10.1	22.3	10.1	210	64.76	19.4	8.8	19.3	8.8	19.5	8.8	210	64.76	17.4	7.9	17.7	8.0	18.0	8.2
210	64.76	20.5	9.3	20.3	9.2	20.5	9.3	220	67.85	17.6	8.0	17.5	7.9	17.7	8.0	220	67.85	15.6	7.1	15.9	7.2	16.2	7.3
220	67.85	18.8	8.5	18.5	8.4	18.6	8.4	230	70.93	16.0	7.3	15.9	7.2	16.0	7.3	230	70.93	14.0	6.4	14.3	6.5	14.5	6.6
230	70.93	17.1	7.8	16.9	7.7	16.9	7.7	240	74.02	14.6	6.6	14.4	6.5	14.4	6.5	240	74.02	12.5	5.7	12.8	5.8	13.0	5.9
240	74.02	15.7	7.1	15.3	6.9			250	77.10	13.2	6.0	12.9	5.9	13.0	5.9	250	77.10	11.2	5.1	11.4	5.2	11.5	5.2
250	77.10	14.3	6.5					260	80.18	12.0	5.4	11.6	5.3	0.0	0.0	260	80.18	9.9	4.5	10.1	4.6	10.2	4.6
								270	83.27	10.3	4.7					270	83.27	8.8	4.0	8.9	4.0	9.0	4.1
																280	86.35	7.7	3.5	7.8	3.5		
																290	89.44	6.7	3.0	6.8	3.1		

Load Chart With Long Range Boom & Jib - Extended Gauge - 360° Rotation - ABC + A [221,100 75,000 lb (100.3 + 34.0kg)] Cwt																			
40 ft (12.34m) Jib Length																			
275 ft (84.81m) Boom Length								295 ft (90.98m) Boom Length											
Load Radius		5° Jib Offset		15° Jib Offset		25° Jib Offset		Load Radius		5° Jib Offset		15° Jib Offset		25° Jib Offset					
ft	m	kips	mt	kips	mt	kips	mt	ft	m	kips	mt	kips	mt	kips	mt				
55	16.96	33.3	15.1					60	18.50	28.4	12.9								
60	18.50	32.9	14.9	32.5	14.7			65	20.05	28.1	12.7	27.7	12.6						
65	20.05	32.6	14.8	32.1	14.6			70	21.59	27.8	12.6	27.3	12.4	26.3	11.9				
70	21.59	32.2	14.6	31.6	14.3	30.4	13.8	75	23.13	27.4	12.4	26.9	12.2	25.8	11.7				
75	23.13	31.9	14.5	31.2	14.2	29.9	13.6	80	24.67	27.1	12.3	26.5	12.0	25.4	11.5				
80	24.67	31.5	14.3	30.8	14.0	29.4	13.3	85	26.21	26.8	12.2	26.1	11.8	24.9	11.3				
85	26.21	31.2	14.2	30.4	13.8	29.0	13.2	90	27.76	26.4	12.0	25.7	11.7	24.5	11.1				
90	27.76	30.8	14.0	30.0	13.6	28.6	13.0	100	30.84	25.8	11.7	25.0	11.3	23.7	10.8				
100	30.84	30.1	13.7	29.2	13.2	27.7	12.6	110	33.92	25.1	11.4	24.3	11.0	23.0	10.4				
110	33.92	29.4	13.3	28.4	12.9	27.0	12.2	120	37.01	24.5	11.1	23.6	10.7	22.3	10.1				
120	37.01	28.7	13.0	27.7	12.6	26.2	11.9	130	40.09	23.8	10.8	22.9	10.4	21.7	9.8				
130	40.09	28.1	12.7	27.0	12.2	25.5	11.6	140	43.18	23.3	10.6	22.3	10.1	21.1	9.6				
140	43.18	27.4	12.4	26.4	12.0	24.9	11.3	150	46.26	22.7	10.3	21.7	9.8	20.5	9.3				
150	46.26	26.8	12.2	25.7	11.7	24.2	11.0	160	49.34	22.1	10.0	21.2	9.6	19.9	9.0				
160	49.34	26.1	11.8	25.1	11.4	23.7	10.8	170	52.43	21.6	9.8	20.7	9.4	19.4	8.8				
170	52.43	25.6	11.6	24.5	11.1	23.1	10.5	180	55.51	21.1	9.6	20.2	9.2	19.0	8.6				
180	55.51	23.4	10.6	23.9	10.8	22.5	10.2	190	58.60	20.6	9.3	19.7	8.9	18.5	8.4				
190	58.60	21.0	9.5	21.5	9.8	21.9	9.9	200	61.68	18.4	8.3	18.9	8.6	18.1	8.2				
200	61.68	18.8	8.5	19.2	8.7	19.6	8.9	210	64.76	16.5	7.5	16.9	7.7	17.2	7.8				
210	64.76	16.8	7.6	17.2	7.8	17.6	8.0	220	67.85	14.7	6.7	15.1	6.8	15.4	7.0				
220	67.85	15.1	6.8	15.4	7.0	15.7	7.1	230	70.93	13.1	5.9	13.4	6.1	13.7	6.2				
230	70.93	13.5	6.1	13.8	6.3	14.0	6.4	240	74.02	11.6	5.3	11.9	5.4	12.2	5.5				
240	74.02	12.0	5.4	12.3	5.6	12.5	5.7	250	77.10	10.3	4.7	10.5	4.8	10.8	4.9				
250	77.10	10.6	4.8	10.9	4.9	11.1	5.0	260	80.18	9.0	4.1	9.3	4.2	9.5	4.3				
260	80.18	9.4	4.3	9.6	4.4	9.8	4.4	270	83.27	7.9	3.6	8.1	3.7	8.3	3.8				
270	83.27	8.3	3.8	8.4	3.8	8.6	3.9	280	86.35	6.8	3.1	7.0	3.2	7.1	3.2				
280	86.35	7.2	3.3	7.3	3.3	7.4	3.4	290	89.44	5.8	2.6	6.0	2.7	6.1	2.8				
290	89.44	6.2	2.8	6.3	2.9	6.4	2.9	300	92.52	4.9	2.2	5.0	2.3	5.1	2.3				
								310	95.60	0.0	0.0	4.2	1.9	4.2	1.9				

Load Chart With Long Range Boom & Jib – Extended Gauge – 360° Rotation – ABC + A [221,100 75,000 lb (100.3 + 34.0kg)] Cwt																							
85 ft (26.21m) Boom Length								60 ft (18.50m) Jib Length								125 ft (38.55m) Boom Length							
Load Radius		5° Jib Offset		15° Jib Offset		25° Jib Offset		Load Radius		5° Jib Offset		15° Jib Offset		25° Jib Offset		Load Radius		5° Jib Offset		15° Jib Offset		25° Jib Offset	
ft	m	kips	mt	kips	mt	kips	mt	ft	m	kips	mt	kips	mt	kips	mt	ft	m	kips	mt	kips	mt	kips	mt
45	13.88	62.5	28.3	46.2	21.0			35	10.79	71.2	32.3					40	12.34	67.3	30.5				
50	15.42	58.0	26.3	46.2	21.0	28.2	12.8	40	12.34	67.3	30.5					45	13.88	62.4	28.3				
55	16.96	54.1	24.5	46.2	21.0	28.2	12.8	45	13.88	62.3	28.3	46.2	21.0			50	15.42	58.2	26.4	46.2	21.0		
60	18.50	50.8	23.0	44.3	20.1	28.2	12.8	50	15.42	57.9	26.3	46.2	21.0			55	16.96	54.4	24.7	45.3	20.5		
65	20.05	47.7	21.6	42.0	19.1	28.2	12.8	55	16.96	54.1	24.5	45.8	20.8	28.2	12.8	60	18.50	51.1	23.2	43.0	19.5	28.2	12.8
70	21.59	45.1	20.5	40.3	18.3	28.2	12.8	60	18.50	50.7	23.0	43.4	19.7	28.2	12.8	65	20.05	48.2	21.9	40.8	18.5	28.2	12.8
75	23.13	42.7	19.4	38.5	17.5	28.2	12.8	65	20.05	47.7	21.6	41.2	18.7	28.2	12.8	70	21.59	45.5	20.6	39.8	18.1	28.2	12.8
80	24.67	40.6	18.4	36.8	16.7	28.2	12.8	70	21.59	45.1	20.5	39.9	18.1	28.2	12.8	75	23.13	43.1	19.5	38.0	17.2	28.2	12.8
85	26.21	39.1	17.7	35.2	16.0	28.2	12.8	75	23.13	42.7	19.4	38.0	17.2	28.2	12.8	80	24.67	41.0	18.6	36.3	16.5	28.2	12.8
90	27.76	37.3	16.9	33.8	15.3	28.2	12.8	80	24.67	40.6	18.4	36.4	16.5	28.2	12.8	85	26.21	40.0	18.1	34.8	15.8	28.2	12.8
100	30.84	34.2	15.5	31.3	14.2	28.2	12.8	85	26.21	39.4	17.9	34.8	15.8	28.2	12.8	90	27.76	38.1	17.3	33.4	15.1	28.2	12.8
110	33.92	31.5	14.3	29.1	13.2	27.1	12.3	90	27.76	37.5	17.0	33.4	15.1	28.2	12.8	100	30.84	34.9	15.8	31.0	14.1	27.8	12.6
120	37.01	29.2	13.2	27.3	12.4	25.6	11.6	100	30.84	34.4	15.6	30.9	14.0	28.1	12.7	110	33.92	32.2	14.6	28.8	13.1	26.1	11.8
130	40.09	27.3	12.4	25.7	11.7	24.4	11.1	110	33.92	31.7	14.4	28.8	13.1	26.4	12.0	120	37.01	29.8	13.5	27.0	12.2	24.7	11.2
140	43.18	25.6	11.6	24.4	11.1	23.5	10.7	120	37.01	29.4	13.3	26.9	12.2	25.0	11.3	130	40.09	27.8	12.6	25.4	11.5	23.4	10.6
150	46.26	24.2	11.0	23.5	10.7			130	40.09	27.4	12.4	25.3	11.5	23.7	10.8	140	43.18	26.0	11.8	23.9	10.8	22.3	10.1
								140	43.18	25.6	11.6	23.9	10.8	22.6	10.3	150	46.26	24.4	11.1	22.7	10.3	21.3	9.7
								150	46.26	24.1	10.9	22.7	10.3	21.7	9.8	160	49.34	23.0	10.4	21.6	9.8	20.5	9.3
								160	49.34	22.8	10.3	21.7	9.8	21.1	9.6	170	52.43	21.8	9.9	20.6	9.3	19.8	9.0
								170	52.43	21.6	9.8					180	55.51	20.7	9.4	19.7	8.9	19.3	8.8
																190	58.60	19.7	8.9				
145 ft (44.72m) Boom Length								165 ft (50.89m) Boom Length								185 ft (57.05m) Boom Length							
Load Radius		5° Jib Offset		15° Jib Offset		25° Jib Offset		Load Radius		5° Jib Offset		15° Jib Offset		25° Jib Offset		Load Radius		5° Jib Offset		15° Jib Offset		25° Jib Offset	
ft	m	kips	mt	kips	mt	kips	mt	ft	m	kips	mt	kips	mt	kips	mt	ft	m	kips	mt	kips	mt	kips	mt
40	12.34	67.3	30.5					45	13.88	62.5	28.3					45	13.88	62.0	28.1				
45	13.88	62.6	28.4					50	15.42	58.6	26.6					50	15.42	58.3	26.4				
50	15.42	58.5	26.5	46.2	21.0			55	16.96	55.0	24.9	44.7	20.3			55	16.96	55.0	24.9	44.4	20.1		
55	16.96	54.8	24.9	45.0	20.4			60	18.50	51.9	23.5	42.5	19.3			60	18.50	51.9	23.5	42.3	19.2		
60	18.50	51.6	23.4	42.7	19.4	28.2	12.8	65	20.05	49.0	22.2	40.5	18.4	28.2	12.8	65	20.05	49.2	22.3	40.4	18.3	28.2	12.8
65	20.05	48.6	22.0	40.7	18.5	28.2	12.8	70	21.59	46.4	21.0	39.8	18.1	28.2	12.8	70	21.59	46.7	21.2	39.7	18.0	28.2	12.8
70	21.59	46.0	20.9	39.8	18.1	28.2	12.8	75	23.13	44.1	20.0	38.1	17.3	28.2	12.8	75	23.13	44.4	20.1	38.1	17.3	28.2	12.8
75	23.13	43.7	19.8	38.0	17.2	28.2	12.8	80	24.67	42.0	19.1	36.5	16.6	28.2	12.8	80	24.67	42.3	19.2	36.5	16.6	28.2	12.8
80	24.67	41.5	18.8	36.4	16.5	28.2	12.8	85	26.21	40.0	18.1	35.0	15.9	28.2	12.8	85	26.21	40.4	18.3	35.1	15.9	28.2	12.8
85	26.21	40.3	18.3	34.9	15.8	28.2	12.8	90	27.76	39.4	17.9	33.7	15.3	28.2	12.8	90	27.76	39.8	18.1	33.8	15.3	28.2	12.8
90	27.76	38.8	17.6	33.6	15.2	28.2	12.8	100	30.84	36.1	16.4	31.3	14.2	27.5	12.5	100	30.84	36.6	16.6	31.4	14.2	27.4	12.4
100	30.84	35.6	16.1	31.1	14.1	27.6	12.5	110	33.92	33.3	15.1	29.1	13.2	25.9	11.7	110	33.92	33.8	15.3	29.3	13.3	25.8	11.7
110	33.92	32.8	14.9	29.0	13.2	26.0	11.8	120	37.01	30.9	14.0	27.3	12.4	24.5	11.1	120	37.01	31.3	14.2	27.4	12.4	24.4	11.1
120	37.01	30.4	13.8	27.1	12.3	24.6	11.2	130	40.09	28.8	13.1	25.7	11.7	23.2	10.5	130	40.09	29.2	13.2	25.8	11.7	23.1	10.5
130	40.09	28.3	12.8	25.5	11.6	23.3	10.6	140	43.18	26.9	12.2	24.2	11.0	22.1	10.0	140	43.18	27.3	12.4	24.3	11.0	22.0	10.0
140	43.18	26.5	12.0	24.1	10.9	22.2	10.1	150	46.26	25.3	11.5	22.9	10.4	21.1	9.6	150	46.26	25.6	11.6	23.0	10.4	21.0	9.5
150	46.26	24.8	11.2	22.8	10.3	21.1	9.6	160	49.34	23.8	10.8	21.7	9.8	20.1	9.1	160	49.34	24.1	10.9	21.8	9.9	20.0	9.1
160	49.34	23.4	10.6	21.6	9.8	20.3	9.2	170	52.43	22.5	10.2	20.7	9.4	19.3	8.8	170	52.43	22.8	10.3	20.7	9.4	19.2	8.7
170	52.43	22.1	10.0	20.6	9.3	19.5	8.8	180	55.51	21.3	9.7	19.7	8.9	18.6	8.4	180	55.51	21.6	9.8	19.8	9.0	18.4	8.3
180	55.51	21.0	9.5	19.7	8.9	18.8	8.5	190	58.60	20.2	9.2	18.9	8.6	17.9	8.1	190	58.60	20.5	9.3	18.9	8.6	17.7	8.0
190	58.60	19.9	9.0	18.9	8.6	18.2	8.3	200	61.68	19.2	8.7	18.1	8.2	17.3	7.8	200	61.68	19.4	8.8	18.1	8.2	17.1	7.8
200	61.68	19.0	8.6	18.2	8.3			210	64.76	18.3	8.3	17.4	7.9	16.8	7.6	210	64.76	18.5	8.4	17.3	7.8	16.5	7.5
210	64.76	18.1	8.2					220	67.85	17.5	7.9	16.8	7.6			220	67.85	17.7	8.0	16.7	7.6	16.0	7.3
								230	70.93	16.7	7.6					230	70.93	16.9	7.7	16.1	7.3	15.6	7.1
																240	74.02	16.1	7.3	15.5	7.0		
																250	77.10	15.5	7.0				



Load Chart With Long Range Boom & Jib – Extended Gauge – 360° Rotation – ABC + A [221,100 75,000 lb (100.3 + 34.0kg)] Cwt																							
205 ft (63.22m) Boom Length												60 ft (18.50m) Jib Length											
205 ft (63.22m) Boom Length								225 ft (69.39m) Boom Length								255 ft (78.64m) Boom Length							
Load Radius		5° Jib Offset		15° Jib Offset		25° Jib Offset		Load Radius		5° Jib Offset		15° Jib Offset		25° Jib Offset		Load Radius		5° Jib Offset		15° Jib Offset		25° Jib Offset	
ft	m	kips	mt	kips	mt	kips	mt	ft	m	kips	mt	kips	mt	kips	mt	ft	m	kips	mt	kips	mt	kips	mt
50	15.42	55.4	25.1					55	16.96	46.6	21.1					55	16.96	34.7	15.7				
55	16.96	54.5	24.7					60	18.50	46.2	21.0					60	18.50	34.4	15.6				
60	18.50	51.6	23.4	41.9	19.0			65	20.05	45.8	20.8	39.7	18.0			65	20.05	34.1	15.5	33.2	15.1		
65	20.05	49.0	22.2	40.1	18.2			70	21.59	45.4	20.6	39.1	17.7	28.2	12.8	70	21.59	33.8	15.3	32.8	14.9		
70	21.59	46.6	21.1	39.5	17.9	28.2	12.8	75	23.13	44.1	20.0	37.5	17.0	28.2	12.8	75	23.13	33.4	15.1	32.4	14.7	28.2	12.8
75	23.13	44.4	20.1	37.9	17.2	28.2	12.8	80	24.67	42.2	19.1	36.1	16.4	28.2	12.8	80	24.67	33.1	15.0	32.0	14.5	28.2	12.8
80	24.67	42.4	19.2	36.4	16.5	28.2	12.8	85	26.21	40.4	18.3	34.8	15.8	28.2	12.8	85	26.21	32.8	14.9	31.6	14.3	28.2	12.8
85	26.21	40.5	18.4	35.0	15.9	28.2	12.8	90	27.76	39.8	18.1	33.5	15.2	28.2	12.8	90	27.76	32.5	14.7	31.2	14.2	28.2	12.8
90	27.76	40.0	18.1	33.7	15.3	28.2	12.8	100	30.84	36.8	16.7	31.2	14.2	27.0	12.2	100	30.84	31.8	14.4	30.5	13.8	26.6	12.1
100	30.84	36.8	16.7	31.4	14.2	27.2	12.3	110	33.92	34.1	15.5	29.2	13.2	25.5	11.6	110	33.92	31.1	14.1	28.8	13.1	25.1	11.4
110	33.92	34.1	15.5	29.3	13.3	25.7	11.7	120	37.01	31.7	14.4	27.4	12.4	24.1	10.9	120	37.01	30.5	13.8	27.1	12.3	23.7	10.8
120	37.01	31.6	14.3	27.5	12.5	24.3	11.0	130	40.09	29.6	13.4	25.8	11.7	22.9	10.4	130	40.09	29.3	13.3	25.5	11.6	22.5	10.2
130	40.09	29.5	13.4	25.8	11.7	23.0	10.4	140	43.18	27.8	12.6	24.4	11.1	21.7	9.8	140	43.18	27.5	12.5	24.1	10.9	21.4	9.7
140	43.18	27.6	12.5	24.4	11.1	21.9	9.9	150	46.26	26.1	11.8	23.0	10.4	20.7	9.4	150	46.26	25.9	11.7	22.8	10.3	20.4	9.3
150	46.26	25.9	11.7	23.1	10.5	20.9	9.5	160	49.34	24.6	11.2	21.9	9.9	19.8	9.0	160	49.34	24.4	11.1	21.7	9.8	19.5	8.8
160	49.34	24.4	11.1	21.9	9.9	19.9	9.0	170	52.43	23.2	10.5	20.8	9.4	18.9	8.6	170	52.43	23.1	10.5	20.6	9.3	18.6	8.4
170	52.43	23.0	10.4	20.8	9.4	19.1	8.7	180	55.51	22.0	10.0	19.8	9.0	18.2	8.3	180	55.51	21.8	9.9	19.6	8.9	17.8	8.1
180	55.51	21.8	9.9	19.8	9.0	18.3	8.3	190	58.60	20.8	9.4	18.9	8.6	17.4	7.9	190	58.60	20.7	9.4	18.7	8.5	17.1	7.8
190	58.60	20.7	9.4	18.9	8.6	17.6	8.0	200	61.68	19.8	9.0	18.1	8.2	16.8	7.6	200	61.68	19.7	8.9	17.9	8.1	16.4	7.4
200	61.68	19.7	8.9	18.1	8.2	16.9	7.7	210	64.76	18.8	8.5	17.3	7.8	16.2	7.3	210	64.76	17.9	8.1	17.1	7.8	15.8	7.2
210	64.76	18.7	8.5	17.3	7.8	16.3	7.4	220	67.85	18.0	8.2	16.6	7.5	15.6	7.1	220	67.85	16.1	7.3	16.4	7.4	15.2	6.9
220	67.85	17.8	8.1	16.6	7.5	15.8	7.2	230	70.93	16.5	7.5	15.9	7.2	15.1	6.8	230	70.93	14.5	6.6	15.0	6.8	14.7	6.7
230	70.93	17.0	7.7	16.0	7.3	15.3	6.9	240	74.02	15.0	6.8	15.0	6.8	14.6	6.6	240	74.02	13.0	5.9	13.5	6.1	13.8	6.3
240	74.02	16.1	7.3	15.4	7.0	14.9	6.8	250	77.10	13.7	6.2	13.6	6.2	13.8	6.3	250	77.10	11.7	5.3	12.1	5.5	12.4	5.6
250	77.10	14.8	6.7	14.6	6.6	14.5	6.6	260	80.18	12.4	5.6	12.3	5.6	12.4	5.6	260	80.18	10.4	4.7	10.8	4.9	11.0	5.0
260	80.18	13.5	6.1	13.3	6.0			270	83.27	11.3	5.1	11.1	5.0	11.2	5.1	270	83.27	9.3	4.2	9.6	4.4	9.8	4.4
270	83.27	12.4	5.6					280	86.35	10.2	4.6	9.9	4.5			280	86.35	8.2	3.7	8.5	3.9	8.6	3.9
								290	89.44	8.5	3.9					290	89.44	7.2	3.3	7.4	3.4	7.5	3.4
																300	92.52	6.3	2.9	6.4	2.9		
																310	95.60	5.4	2.4	5.5	2.5		
																320	98.69	3.9	1.8				

Load Chart With Long Range Boom & Jib – Extended Gauge – 360° Rotation – ABC + A [221,100 75,000 lb (100.3 + 34.0kg)] Cwt																			
275 ft (84.81m) Boom Length												60 ft (18.50m) Jib Length							
275 ft (84.81m) Boom Length								295 ft (90.98m) Boom Length											
Load Radius		5° Jib Offset		15° Jib Offset		25° Jib Offset		Load Radius		5° Jib Offset		15° Jib Offset		25° Jib Offset					
ft	m	kips	mt	kips	mt	kips	mt	ft	m	kips	mt	kips	mt	kips	mt				
60	18.50	29.7	13.5					60	18.50	25.8	11.7								
65	20.05	29.4	13.3					65	20.05	25.4	11.5								
70	21.59	29.0	13.2	28.3	12.8			70	21.59	25.1	11.4								
75	23.13	28.7	13.0	27.9	12.7			75	23.13	24.8	11.2	24.2	11.0						
80	24.67	28.4	12.9	27.5	12.5	25.8	11.7	80	24.67	24.5	11.1	23.8	10.8	22.5	10.2				
85	26.21	28.1	12.7	27.1	12.3	25.4	11.5	85	26.21	24.2	11.0	23.4	10.6	22.1	10.0				
90	27.76	27.7	12.6	26.8	12.2	25.0	11.3	90	27.76	23.9	10.8	23.1	10.5	21.7	9.8				
100	30.84	27.1	12.3	26.0	11.8	24.2	11.0	100	30.84	23.2	10.5	22.4	10.2	20.9	9.5				
110	33.92	26.4	12.0	25.3	11.5	23.5	10.7	110	33.92	22.6	10.3	21.7	9.8	20.2	9.2				
120	37.01	25.8	11.7	24.7	11.2	22.8	10.3	120	37.01	22.0	10.0	21.0	9.5	19.6	8.9				
130	40.09	25.2	11.4	24.0	10.9	22.2	10.1	130	40.09	21.4	9.7	20.4	9.3	19.0	8.6				
140	43.18	24.6	11.2	23.4	10.6	21.1	9.6	140	43.18	20.8	9.4	19.8	9.0	18.4	8.3				
150	46.26	24.0	10.9	22.6	10.3	20.1	9.1	150	46.26	20.3	9.2	19.3	8.8	17.9	8.1				
160	49.34	23.4	10.6	21.4	9.7	19.2	8.7	160	49.34	19.8	9.0	18.7	8.5	17.3	7.8				
170	52.43	22.8	10.3	20.4	9.3	18.4	8.3	170	52.43	19.2	8.7	18.2	8.3	16.9	7.7				
180	55.51	21.7	9.8	19.4	8.8	17.6	8.0	180	55.51	18.8	8.5	17.7	8.0	16.4	7.4				
190	58.60	20.6	9.3	18.6	8.4	16.9	7.7	190	58.60	18.3	8.3	17.3	7.8	16.0	7.3				
200	61.68	19.3	8.8	17.7	8.0	16.2	7.3	200	61.68	17.8	8.1	16.8	7.6	15.5	7.0				
210	64.76	17.3	7.8	17.0	7.7	15.6	7.1	210	64.76	16.9	7.7	16.4	7.4	15.2	6.9				
220	67.85	15.6	7.1	16.1	7.3	15.0	6.8	220	67.85	15.1	6.8	15.7	7.1	14.7	6.7				
230	70.93	13.9	6.3	14.5	6.6	14.5	6.6	230	70.93	13.5	6.1	14.1	6.4	14.2	6.4				
240	74.02	12.5	5.7	12.9	5.9	13.3	6.0	240	74.02	12.0	5.4	12.6	5.7	13.0	5.9				
250	77.10	11.1	5.0	11.5	5.2	11.9	5.4	250	77.10	10.7	4.9	11.2	5.1	11.5	5.2				
260	80.18	9.9	4.5	10.2	4.6	10.5	4.8	260	80.18	9.4	4.3	9.9	4.5	10.2	4.6				
270	83.27	8.7	3.9	9.1	4.1	9.3	4.2	270	83.27	8.3	3.8	8.7	3.9	9.0	4.1				
280	86.35	7.6	3.4	7.9	3.6	8.2	3.7	280	86.35	7.2	3.3	7.6	3.4	7.8	3.5				
290	89.44	6.7	3.0	6.9	3.1	7.1	3.2	290	89.44	6.2	2.8	6.5	2.9	6.8	3.1				
300	92.52	5.7	2.6	5.9	2.7	6.1	2.8	300	92.52	5.3	2.4	5.6	2.5	5.8	2.6				
310	95.60	4.9	2.2	5.0	2.3	5.1	2.3	310	95.60	4.4	2.0	4.7	2.1	4.8	2.2				
320	98.69	4.1	1.9	4.2	1.9			320	98.69	3.6	1.6	3.8	1.7	3.9	1.8				
								330	101.77	2.9	1.3	3.0	1.4	3.1	1.4				

Load Chart With Long Range Boom & Jib – Extended Gauge – 360° Rotation – ABC + A [221,100 75,000 lb (100.3 + 34.0kg)] Cwt																							
85 ft (26.21m) Boom Length												80 ft (24.67m) Jib Length											
85 ft (26.21m) Boom Length								105 ft (32.38m) Boom Length								125 ft (38.55m) Boom Length							
Load Radius		5° Jib Offset		15° Jib Offset		25° Jib Offset		Load Radius		5° Jib Offset		15° Jib Offset		25° Jib Offset		Load Radius		5° Jib Offset		15° Jib Offset		25° Jib Offset	
ft	m	kips	mt	kips	mt	kips	mt	ft	m	kips	mt	kips	mt	kips	mt	ft	m	kips	mt	kips	mt	kips	mt
40	12.34	56.3	25.5					40	12.34	56.1	25.4					45	13.88	52.6	23.9				
45	13.88	53.4	24.2					45	13.88	52.8	23.9					50	15.42	49.1	22.3				
50	15.42	49.7	22.5	34.6	15.7			50	15.42	49.1	22.3					55	16.96	45.9	20.8	34.6	15.7		
55	16.96	46.4	21.0	34.6	15.7			55	16.96	45.9	20.8	34.6	15.7			60	18.50	43.2	19.6	34.6	15.7		
60	18.50	43.5	19.7	34.6	15.7			60	18.50	43.1	19.5	34.6	15.7			65	20.05	40.7	18.5	34.6	15.7		
65	20.05	41.0	18.6	34.6	15.7	21.2	9.6	65	20.05	40.6	18.4	34.6	15.7	21.2	9.6	70	21.59	39.4	17.9	33.3	15.1	21.2	9.6
70	21.59	39.2	17.8	34.4	15.6	21.2	9.6	70	21.59	39.1	17.7	33.6	15.2	21.2	9.6	75	23.13	37.4	17.0	31.7	14.4	21.2	9.6
75	23.13	37.1	16.8	32.8	14.9	21.2	9.6	75	23.13	37.1	16.8	32.0	14.5	21.2	9.6	80	24.67	35.5	16.1	30.4	13.8	21.2	9.6
80	24.67	35.2	16.0	31.3	14.2	21.2	9.6	80	24.67	35.2	16.0	30.6	13.9	21.2	9.6	85	26.21	33.8	15.3	29.1	13.2	21.2	9.6
85	26.21	33.5	15.2	29.9	13.6	21.2	9.6	85	26.21	33.4	15.1	29.3	13.3	21.2	9.6	90	27.76	32.2	14.6	27.9	12.7	21.2	9.6
90	27.76	32.0	14.5	28.7	13.0	21.2	9.6	90	27.76	31.9	14.5	28.1	12.7	21.2	9.6	100	30.84	29.4	13.3	25.8	11.7	21.2	9.6
100	30.84	29.2	13.2	26.5	12.0	21.2	9.6	100	30.84	29.1	13.2	25.9	11.7	21.2	9.6	110	33.92	27.1	12.3	24.0	10.9	21.2	9.6
110	33.92	26.9	12.2	24.6	11.2	21.2	9.6	110	33.92	26.8	12.2	24.1	10.9	21.2	9.6	120	37.01	25.0	11.3	22.4	10.2	20.2	9.2
120	37.01	24.9	11.3	22.9	10.4	21.2	9.6	120	37.01	24.8	11.2	22.5	10.2	20.5	9.3	130	40.09	23.3	10.6	21.0	9.5	19.1	8.7
130	40.09	23.2	10.5	21.5	9.8	20.1	9.1	130	40.09	23.0	10.4	21.1	9.6	19.4	8.8	140	43.18	21.7	9.8	19.7	8.9	18.1	8.2
140	43.18	21.7	9.8	20.3	9.2	19.1	8.7	140	43.18	21.5	9.8	19.8	9.0	18.4	8.3	150	46.26	20.4	9.3	18.6	8.4	17.2	7.8
150	46.26	20.4	9.3	19.2	8.7	18.3	8.3	150	46.26	20.2	9.2	18.7	8.5	17.5	7.9	160	49.34	19.1	8.7	17.6	8.0	16.4	7.4
160	49.34	19.2	8.7	18.3	8.3	17.6	8.0	160	49.34	19.0	8.6	17.8	8.1	16.8	7.6	170	52.43	18.0	8.2	16.8	7.6	15.8	7.2
170	52.43	18.2	8.3	17.7	8.0			170	52.43	17.9	8.1	16.9	7.7	16.2	7.3	180	55.51	17.1	7.8	16.0	7.3	15.2	6.9
								180	55.51	17.0	7.7	16.2	7.3	15.7	7.1	190	58.60	16.2	7.3	15.3	6.9	14.7	6.7
								190	58.60	16.2	7.3					200	61.68	15.4	7.0	14.7	6.7	14.3	6.5
																210	64.76	14.7	6.7				

Load Chart With Long Range Boom & Jib – Extended Gauge – 360° Rotation – ABC + A [221,100 75,000 lb (100.3 + 34.0kg)] Cwt																							
145 ft (44.72m) Boom Length												80 ft (24.67m) Jib Length											
145 ft (44.72m) Boom Length								165 ft (50.89m) Boom Length								185 ft (57.05m) Boom Length							
Load Radius		5° Jib Offset		15° Jib Offset		25° Jib Offset		Load Radius		5° Jib Offset		15° Jib Offset		25° Jib Offset		Load Radius		5° Jib Offset		15° Jib Offset		25° Jib Offset	
ft	m	kips	mt	kips	mt	kips	mt	ft	m	kips	mt	kips	mt	kips	mt	ft	m	kips	mt	kips	mt	kips	mt
45	13.88	52.5	23.8					50	15.42	49.1	22.3					50	15.42	48.8	22.1				
50	15.42	49.1	22.3					55	16.96	46.1	20.9					55	16.96	46.0	20.9				
55	16.96	46.1	20.9					60	18.50	43.5	19.7	34.6	15.7			60	18.50	43.5	19.7				
60	18.50	43.4	19.7	34.6	15.7			65	20.05	41.1	18.6	34.5	15.6			65	20.05	41.2	18.7	34.3	15.6		
65	20.05	40.9	18.6	34.6	15.7			70	21.59	40.2	18.2	33.0	15.0			70	21.59	40.2	18.2	32.8	14.9		
70	21.59	39.8	18.1	33.1	15.0	21.2	9.6	75	23.13	38.1	17.3	31.5	14.3	21.2	9.6	75	23.13	38.4	17.4	31.4	14.2	21.2	9.6
75	23.13	37.8	17.1	31.6	14.3	21.2	9.6	80	24.67	36.3	16.5	30.2	13.7	21.2	9.6	80	24.67	36.6	16.6	30.1	13.7	21.2	9.6
80	24.67	35.9	16.3	30.3	13.7	21.2	9.6	85	26.21	34.6	15.7	29.0	13.2	21.2	9.6	85	26.21	34.9	15.8	28.9	13.1	21.2	9.6
85	26.21	34.2	15.5	29.0	13.2	21.2	9.6	90	27.76	33.0	15.0	27.9	12.7	21.2	9.6	90	27.76	33.3	15.1	27.8	12.6	21.2	9.6
90	27.76	32.6	14.8	27.9	12.7	21.2	9.6	100	30.84	30.3	13.7	25.8	11.7	21.2	9.6	100	30.84	30.6	13.9	25.8	11.7	21.2	9.6
100	30.84	29.8	13.5	25.8	11.7	21.2	9.6	110	33.92	27.9	12.7	24.0	10.9	21.1	9.6	110	33.92	28.2	12.8	24.1	10.9	20.9	9.5
110	33.92	27.5	12.5	24.0	10.9	21.2	9.6	120	37.01	25.8	11.7	22.5	10.2	19.9	9.0	120	37.01	26.1	11.8	22.5	10.2	19.7	8.9
120	37.01	25.4	11.5	22.4	10.2	20.0	9.1	130	40.09	24.0	10.9	21.1	9.6	18.8	8.5	130	40.09	24.3	11.0	21.1	9.6	18.7	8.5
130	40.09	23.6	10.7	21.0	9.5	18.9	8.6	140	43.18	22.4	10.2	19.8	9.0	17.8	8.1	140	43.18	22.7	10.3	19.9	9.0	17.7	8.0
140	43.18	22.0	10.0	19.8	9.0	17.9	8.1	150	46.26	21.0	9.5	18.7	8.5	16.9	7.7	150	46.26	21.2	9.6	18.8	8.5	16.8	7.6
150	46.26	20.6	9.3	18.6	8.4	17.0	7.7	160	49.34	19.7	8.9	17.7	8.0	16.1	7.3	160	49.34	19.9	9.0	17.7	8.0	16.0	7.3
160	49.34	19.4	8.8	17.6	8.0	16.3	7.4	170	52.43	18.5	8.4	16.8	7.6	15.4	7.0	170	52.43	18.8	8.5	16.8	7.6	15.3	6.9
170	52.43	18.3	8.3	16.7	7.6	15.6	7.1	180	55.51	17.5	7.9	16.0	7.3	14.8	6.7	180	55.51	17.7	8.0	16.0	7.3	14.7	6.7
180	55.51	17.3	7.8	15.9	7.2	14.9	6.8	190	58.60	16.6	7.5	15.2	6.9	14.2	6.4	190	58.60	16.8	7.6	15.2	6.9	14.1	6.4
190	58.60	16.4	7.4	15.2	6.9	14.4	6.5	200	61.68	15.7	7.1	14.5	6.6	13.7	6.2	200	61.68	15.9	7.2	14.5	6.6	13.5	6.1
200	61.68	15.5	7.0	14.6	6.6	13.9	6.3	210	64.76	14.9	6.8	13.9	6.3	13.2	6.0	210	64.76	15.1	6.8	13.9	6.3	13.0	5.9
210	64.76	14.8	6.7	14.0	6.4	13.5	6.1	220	67.85	14.2	6.4	13.4	6.1	12.8	5.8	220	67.85	14.4	6.5	13.3	6.0	12.6	5.7
220	67.85	14.1	6.4	13.5	6.1			230	70.93	13.6	6.2	12.9	5.9	12.4	5.6	230	70.93	13.7	6.2	12.8	5.8	12.2	5.5
230	70.93	13.5	6.1					240	74.02	13.0	5.9	12.4	5.6			240	74.02	13.1	5.9	12.3	5.6	11.8	5.4
								250	77.10	12.4	5.6					250	77.10	12.5	5.7	11.8	5.4	11.5	5.2
																260	80.18	12.0	5.4	11.5	5.2		
																270	83.27	11.5	5.2				

Load Chart With Long Range Boom & Jib – Extended Gauge – 360° Rotation – ABC + A [221,100 75,000 lb (100.3 + 34.0kg)] Cwt																							
205 ft (63.22m) Boom Length												80 ft (24.67m) Jib Length											
205 ft (63.22m) Boom Length								225 ft (69.39m) Boom Length								255 ft (78.64m) Boom Length							
Load Radius		5° Jib Offset		15° Jib Offset		25° Jib Offset		Load Radius		5° Jib Offset		15° Jib Offset		25° Jib Offset		Load Radius		5° Jib Offset		15° Jib Offset		25° Jib Offset	
ft	m	kips	mt	kips	mt	kips	mt	ft	m	kips	mt	kips	mt	kips	mt	ft	m	kips	mt	kips	mt	kips	mt
55	16.96	45.6	20.7					55	16.96	37.7	17.1					60	18.50	30.4	13.8				
60	18.50	43.2	19.6					60	18.50	37.5	17.0					65	20.05	30.2	13.7				
65	20.05	41.1	18.6					65	20.05	37.3	16.9					70	21.59	29.9	13.6				
70	21.59	40.1	18.2	32.6	14.8			70	21.59	37.1	16.8	32.3	14.7			75	23.13	29.7	13.5	28.4	12.9		
75	23.13	38.4	17.4	31.3	14.2			75	23.13	36.9	16.7	31.0	14.1			80	24.67	29.4	13.3	28.1	12.7		
80	24.67	36.6	16.6	30.0	13.6	21.2	9.6	80	24.67	36.4	16.5	29.8	13.5			85	26.21	29.1	13.2	27.7	12.6	21.2	9.6
85	26.21	35.0	15.9	28.9	13.1	21.2	9.6	85	26.21	34.9	15.8	28.7	13.0	21.2	9.6	90	27.76	28.8	13.1	27.2	12.3	21.2	9.6
90	27.76	33.5	15.2	27.8	12.6	21.2	9.6	90	27.76	33.4	15.1	27.6	12.5	21.2	9.6	100	30.84	28.2	12.8	25.4	11.5	21.2	9.6
100	30.84	30.8	14.0	25.8	11.7	21.2	9.6	100	30.84	30.8	14.0	25.7	11.7	21.2	9.6	110	33.92	27.7	12.6	23.7	10.8	20.3	9.2
110	33.92	28.4	12.9	24.1	10.9	20.8	9.4	110	33.92	28.5	12.9	24.0	10.9	20.6	9.3	120	37.01	26.3	11.9	22.3	10.1	19.2	8.7
120	37.01	26.4	12.0	22.5	10.2	19.6	8.9	120	37.01	26.5	12.0	22.5	10.2	19.5	8.8	130	40.09	24.5	11.1	20.9	9.5	18.1	8.2
130	40.09	24.5	11.1	21.1	9.6	18.6	8.4	130	40.09	24.7	11.2	21.1	9.6	18.4	8.3	140	43.18	22.9	10.4	19.7	8.9	17.2	7.8
140	43.18	22.9	10.4	19.9	9.0	17.6	8.0	140	43.18	23.0	10.4	19.9	9.0	17.5	7.9	150	46.26	21.5	9.8	18.6	8.4	16.4	7.4
150	46.26	21.5	9.8	18.8	8.5	16.7	7.6	150	46.26	21.6	9.8	18.8	8.5	16.6	7.5	160	49.34	20.2	9.2	17.6	8.0	15.6	7.1
160	49.34	20.2	9.2	17.8	8.1	15.9	7.2	160	49.34	20.3	9.2	17.8	8.1	15.8	7.2	170	52.43	19.0	8.6	16.7	7.6	14.9	6.8
170	52.43	19.0	8.6	16.9	7.7	15.2	6.9	170	52.43	19.1	8.7	16.8	7.6	15.1	6.8	180	55.51	18.0	8.2	15.9	7.2	14.2	6.4
180	55.51	17.9	8.1	16.0	7.3	14.6	6.6	180	55.51	18.0	8.2	16.0	7.3	14.4	6.5	190	58.60	17.0	7.7	15.1	6.8	13.6	6.2
190	58.60	16.9	7.7	15.2	6.9	13.9	6.3	190	58.60	17.1	7.8	15.2	6.9	13.8	6.3	200	61.68	16.1	7.3	14.4	6.5	13.0	5.9
200	61.68	16.1	7.3	14.5	6.6	13.4	6.1	200	61.68	16.2	7.3	14.5	6.6	13.2	6.0	210	64.76	15.3	6.9	13.7	6.2	12.5	5.7
210	64.76	15.2	6.9	13.9	6.3	12.9	5.9	210	64.76	15.3	6.9	13.8	6.3	12.7	5.8	220	67.85	14.5	6.6	13.1	5.9	12.0	5.4
220	67.85	14.5	6.6	13.3	6.0	12.4	5.6	220	67.85	14.6	6.6	13.2	6.0	12.2	5.5	230	70.93	13.8	6.3	12.5	5.7	11.5	5.2
230	70.93	13.8	6.3	12.7	5.8	12.0	5.4	230	70.93	13.9	6.3	12.7	5.8	11.8	5.4	240	74.02	13.1	5.9	12.0	5.4	11.1	5.0
240	74.02	13.2	6.0	12.2	5.5	11.6	5.3	240	74.02	13.2	6.0	12.2	5.5	11.4	5.2	250	77.10	12.1	5.5	11.5	5.2	10.7	4.9
250	77.10	12.6	5.7	11.8	5.4	11.2	5.1	250	77.10	12.6	5.7	11.7	5.3	11.0	5.0	260	80.18	10.8	4.9	11.1	5.0	10.3	4.7
260	80.18	12.0	5.4	11.3	5.1	10.9	4.9	260	80.18	12.1	5.5	11.2	5.1	10.7	4.9	270	83.27	9.7	4.4	10.1	4.6	10.0	4.5
270	83.27	11.5	5.2	10.9	4.9	10.6	4.8	270	83.27	11.6	5.3	10.8	4.9	10.4	4.7	280	86.35	8.6	3.9	9.0	4.1	9.3	4.2
280	86.35	11.0	5.0	10.6	4.8			280	86.35	10.6	4.8	10.4	4.7	10.1	4.6	290	89.44	7.6	3.4	8.0	3.6	8.2	3.7
290	89.44	10.5	4.8					290	89.44	9.6	4.4	9.5	4.3	9.5	4.3	300	92.52	6.7	3.0	7.0	3.2	7.2	3.3
								300	92.52	8.4	3.8	8.1	3.7			310	95.60	5.8	2.6	6.1	2.8	6.2	2.8
								310	95.60	6.8	3.1					320	98.69	5.0	2.3	5.2	2.4		
																330	101.77	3.9	1.8	4.1	1.9		
																340	104.86	2.5	1.1				

Load Chart With Long Range Boom & Jib – Extended Gauge – 360° Rotation – ABC + A [221,100 75,000 lb (100.3 + 34.0kg)] Cwt																			
275 ft (84.81m) Boom Length												80 ft (24.67m) Jib Length							
275 ft (84.81m) Boom Length								295 ft (90.98m) Boom Length											
Load Radius		5° Jib Offset		15° Jib Offset		25° Jib Offset		Load Radius		5° Jib Offset		15° Jib Offset		25° Jib Offset					
ft	m	kips	mt	kips	mt	kips	mt	ft	m	kips	mt	kips	mt	kips	mt				
65	20.05	26.2	11.9					65	20.05	22.9	10.4								
70	21.59	26.0	11.8					70	21.59	22.6	10.3								
75	23.13	25.7	11.7					75	23.13	22.3	10.1								
80	24.67	25.4	11.5	24.4	11.1			80	24.67	22.0	10.0	21.3	9.7						
85	26.21	25.1	11.4	24.1	10.9			85	26.21	21.8	9.9	21.0	9.5						
90	27.76	24.8	11.2	23.7	10.8	21.2	9.6	90	27.76	21.5	9.8	20.6	9.3						
100	30.84	24.2	11.0	23.1	10.5	20.9	9.5	100	30.84	20.9	9.5	20.0	9.1	18.3	8.3				
110	33.92	23.7	10.8	22.4	10.2	20.1	9.1	110	33.92	20.3	9.2	19.3	8.8	17.7	8.0				
120	37.01	23.1	10.5	21.8	9.9	19.0	8.6	120	37.01	19.8	9.0	18.7	8.5	17.1	7.8				
130	40.09	22.5	10.2	20.7	9.4	18.0	8.2	130	40.09	19.2	8.7	18.2	8.3	16.6	7.5				
140	43.18	22.0	10.0	19.6	8.9	17.0	7.7	140	43.18	18.7	8.5	17.6	8.0	16.0	7.3				
150	46.26	21.4	9.7	18.5	8.4	16.2	7.3	150	46.26	18.2	8.3	17.1	7.8	15.5	7.0				
160	49.34	20.1	9.1	17.5	7.9	15.4	7.0	160	49.34	17.7	8.0	16.6	7.5	15.1	6.8				
170	52.43	19.0	8.6	16.6	7.5	14.7	6.7	170	52.43	17.2	7.8	16.1	7.3	14.5	6.6				
180	55.51	17.9	8.1	15.8	7.2	14.0	6.4	180	55.51	16.7	7.6	15.6	7.1	13.8	6.3				
190	58.60	17.0	7.7	15.0	6.8	13.4	6.1	190	58.60	16.3	7.4	14.8	6.7	13.2	6.0				
200	61.68	16.1	7.3	14.3	6.5	12.9	5.9	200	61.68	15.9	7.2	14.1	6.4	12.7	5.8				
210	64.76	15.3	6.9	13.6	6.2	12.3	5.6	210	64.76	15.2	6.9	13.5	6.1	12.2	5.5				
220	67.85	14.5	6.6	13.0	5.9	11.8	5.4	220	67.85	14.4	6.5	12.9	5.9	11.7	5.3				
230	70.93	13.8	6.3	12.5	5.7	11.4	5.2	230	70.93	13.7	6.2	12.3	5.6	11.2	5.1				
240	74.02	12.8	5.8	11.9	5.4	11.0	5.0	240	74.02	12.4	5.6	11.8	5.4	10.8	4.9				
250	77.10	11.5	5.2	11.5	5.2	10.6	4.8	250	77.10	11.0	5.0	11.3	5.1	10.4	4.7				
260	80.18	10.2	4.6	10.8	4.9	10.2	4.6	260	80.18	9.8	4.4	10.4	4.7	10.0	4.5				
270	83.27	9.1	4.1	9.6	4.4	9.9	4.5	270	83.27	8.6	3.9	9.2	4.2	9.6	4.4				
280	86.35	8.0	3.6	8.5	3.9	8.8	4.0	280	86.35	7.5	3.4	8.1	3.7	8.5	3.9				
290	89.44	7.0	3.2	7.4	3.4	7.7	3.5	290	89.44	6.5	2.9	7.0	3.2	7.4	3.4				
300	92.52	6.1	2.8	6.4	2.9	6.7	3.0	300	92.52	5.6	2.5	6.0	2.7	6.4	2.9				
310	95.60	5.2	2.4	5.5	2.5	5.8	2.6	310	95.60	4.8	2.2	5.1	2.3	5.4	2.4				
320	98.69	4.4	2.0	4.7	2.1	4.8	2.2	320	98.69	4.0	1.8	4.3	2.0	4.5	2.0				
330	101.77	3.7	1.7	3.9	1.8	4.0	1.8	330	101.77	3.2	1.5	3.5	1.6	3.7	1.7				
340	104.86	2.9	1.3	3.1	1.4			340	104.86	2.5	1.1	2.7	1.2	2.9	1.3				
350	107.94			2.3	1.0			350	107.94	0.0	0.0	2.0	0.9	2.1	1.0				
								360	111.02	0.0	0.0								

Load Chart With Long Range Boom & Jib – Extended Gauge – 360° Rotation – ABC + A [221,100 75,000 lb (100.3 + 34.0kg)] Cwt																							
85 ft (26.21m) Boom Length								100 ft (30.84m) Jib Length								125 ft (38.55m) Boom Length							
Load Radius		5° Jib Offset		15° Jib Offset		25° Jib Offset		Load Radius		5° Jib Offset		15° Jib Offset		25° Jib Offset		Load Radius		5° Jib Offset		15° Jib Offset		25° Jib Offset	
ft	m	kips	mt	kips	mt	kips	mt	ft	m	kips	mt	kips	mt	kips	mt	ft	m	kips	mt	kips	mt	kips	mt
40	12.34	46.4	21.0					45	13.88	45.2	20.5					50	15.42	42.3	19.2				
45	13.88	45.3	20.5					50	15.42	42.6	19.3					55	16.96	40.3	18.3				
50	15.42	43.4	19.7					55	16.96	39.9	18.1					60	18.50	38.3	17.4				
55	16.96	40.6	18.4					60	18.50	38.3	17.4	27.7	12.6			65	20.05	36.2	16.4	27.7	12.6		
60	18.50	38.8	17.6	27.7	12.6			65	20.05	36.1	16.4	27.7	12.6			70	21.59	34.2	15.5	27.7	12.6		
65	20.05	36.5	16.6	27.7	12.6			70	21.59	34.1	15.5	27.7	12.6			75	23.13	32.4	14.7	27.3	12.4		
70	21.59	34.5	15.6	27.7	12.6			75	23.13	32.3	14.7	27.7	12.6	16.9	7.7	80	24.67	30.8	14.0	26.1	11.8	16.9	7.7
75	23.13	32.7	14.8	27.7	12.6	16.9	7.7	80	24.67	30.7	13.9	26.5	12.0	16.9	7.7	85	26.21	29.3	13.3	25.0	11.3	16.9	7.7
80	24.67	31.0	14.1	27.4	12.4	16.9	7.7	85	26.21	29.2	13.2	25.4	11.5	16.9	7.7	90	27.76	27.9	12.7	24.0	10.9	16.9	7.7
85	26.21	29.5	13.4	26.2	11.9	16.9	7.7	90	27.76	27.8	12.6	24.3	11.0	16.9	7.7	100	30.84	25.5	11.6	22.1	10.0	16.9	7.7
90	27.76	28.1	12.7	25.0	11.3	16.9	7.7	100	30.84	25.4	11.5	22.4	10.2	16.9	7.7	110	33.92	23.4	10.6	20.5	9.3	16.9	7.7
100	30.84	25.6	11.6	23.1	10.5	16.9	7.7	110	33.92	23.3	10.6	20.7	9.4	16.9	7.7	120	37.01	21.6	9.8	19.1	8.7	16.9	7.7
110	33.92	23.6	10.7	21.4	9.7	16.9	7.7	120	37.01	21.5	9.8	19.3	8.8	16.9	7.7	130	40.09	20.0	9.1	17.8	8.1	16.0	7.3
120	37.01	21.8	9.9	19.9	9.0	16.9	7.7	130	40.09	19.9	9.0	18.0	8.2	16.4	7.4	140	43.18	18.6	8.4	16.7	7.6	15.1	6.8
130	40.09	20.2	9.2	18.6	8.4	16.9	7.7	140	43.18	18.6	8.4	16.9	7.7	15.5	7.0	150	46.26	17.4	7.9	15.7	7.1	14.3	6.5
140	43.18	18.9	8.6	17.4	7.9	16.2	7.3	150	46.26	17.4	7.9	15.9	7.2	14.7	6.7	160	49.34	16.3	7.4	14.8	6.7	13.6	6.2
150	46.26	17.6	8.0	16.4	7.4	15.3	6.9	160	49.34	16.3	7.4	15.0	6.8	14.0	6.4	170	52.43	15.3	6.9	14.0	6.4	13.0	5.9
160	49.34	16.6	7.5	15.5	7.0	14.6	6.6	170	52.43	15.3	6.9	14.2	6.4	13.3	6.0	180	55.51	14.5	6.6	13.3	6.0	12.4	5.6
170	52.43	15.6	7.1	14.7	6.7	14.0	6.4	180	55.51	14.4	6.5	13.5	6.1	12.8	5.8	190	58.60	13.7	6.2	12.7	5.8	11.9	5.4
180	55.51	14.8	6.7	14.1	6.4	13.6	6.2	190	58.60	13.7	6.2	12.9	5.9	12.3	5.6	200	61.68	12.9	5.9	12.1	5.5	11.5	5.2
190	58.60	14.1	6.4	13.6	6.2			200	61.68	13.0	5.9	12.4	5.6	12.0	5.4	210	64.76	12.3	5.6	11.6	5.3	11.1	5.0
								210	64.76	12.4	5.6					220	67.85	11.7	5.3	11.1	5.0	10.8	4.9
																230	70.93	11.2	5.1				

Load Chart With Long Range Boom & Jib – Extended Gauge – 360° Rotation – ABC + A [221,100 75,000 lb (100.3 + 34.0kg)] Cwt																							
100 ft (30.84m) Jib Length																							
145 ft (44.72m) Boom Length								165 ft (50.89m) Boom Length								185 ft (57.05m) Boom Length							
Load Radius		5° Jib Offset		15° Jib Offset		25° Jib Offset		Load Radius		5° Jib Offset		15° Jib Offset		25° Jib Offset		Load Radius		5° Jib Offset		15° Jib Offset		25° Jib Offset	
ft	m	kips	mt	kips	mt	kips	mt	ft	m	kips	mt	kips	mt	kips	mt	ft	m	kips	mt	kips	mt	kips	mt
50	15.42	42.1	19.1					55	16.96	40.1	18.2					55	16.96	39.2	17.8				
55	16.96	39.6	18.0					60	18.50	38.5	17.5					60	18.50	38.4	17.4				
60	18.50	38.4	17.4					65	20.05	36.4	16.5					65	20.05	36.4	16.5				
65	20.05	36.3	16.5	27.7	12.6			70	21.59	34.5	15.6	27.7	12.6			70	21.59	34.6	15.7				
70	21.59	34.4	15.6	27.7	12.6			75	23.13	32.8	14.9	26.9	12.2			75	23.13	32.9	14.9	26.7	12.1		
75	23.13	32.6	14.8	27.1	12.3			80	24.67	31.2	14.2	25.7	11.7			80	24.67	31.4	14.2	25.6	11.6		
80	24.67	31.0	14.1	25.9	11.7			85	26.21	29.8	13.5	24.7	11.2	16.9	7.7	85	26.21	29.9	13.6	24.6	11.2		
85	26.21	29.5	13.4	24.8	11.2	16.9	7.7	90	27.76	28.4	12.9	23.7	10.8	16.9	7.7	90	27.76	28.6	13.0	23.6	10.7	16.9	7.7
90	27.76	28.1	12.7	23.8	10.8	16.9	7.7	100	30.84	26.0	11.8	21.9	9.9	16.9	7.7	100	30.84	26.2	11.9	21.9	9.9	16.9	7.7
100	30.84	25.7	11.7	22.0	10.0	16.9	7.7	110	33.92	23.9	10.8	20.4	9.3	16.9	7.7	110	33.92	24.1	10.9	20.3	9.2	16.9	7.7
110	33.92	23.6	10.7	20.4	9.3	16.9	7.7	120	37.01	22.1	10.0	19.0	8.6	16.6	7.5	120	37.01	22.3	10.1	19.0	8.6	16.4	7.4
120	37.01	21.8	9.9	19.0	8.6	16.8	7.6	130	40.09	20.5	9.3	17.8	8.1	15.6	7.1	130	40.09	20.7	9.4	17.8	8.1	15.5	7.0
130	40.09	20.2	9.2	17.8	8.1	15.8	7.2	140	43.18	19.1	8.7	16.7	7.6	14.8	6.7	140	43.18	19.3	8.8	16.7	7.6	14.6	6.6
140	43.18	18.8	8.5	16.7	7.6	14.9	6.8	150	46.26	17.8	8.1	15.7	7.1	14.0	6.4	150	46.26	18.0	8.2	15.7	7.1	13.9	6.3
150	46.26	17.6	8.0	15.7	7.1	14.1	6.4	160	49.34	16.7	7.6	14.8	6.7	13.3	6.0	160	49.34	16.9	7.7	14.8	6.7	13.2	6.0
160	49.34	16.5	7.5	14.8	6.7	13.4	6.1	170	52.43	15.7	7.1	14.0	6.4	12.7	5.8	170	52.43	15.8	7.2	14.0	6.4	12.5	5.7
170	52.43	15.5	7.0	14.0	6.4	12.8	5.8	180	55.51	14.7	6.7	13.3	6.0	12.1	5.5	180	55.51	14.9	6.8	13.3	6.0	11.9	5.4
180	55.51	14.6	6.6	13.3	6.0	12.2	5.5	190	58.60	13.9	6.3	12.6	5.7	11.5	5.2	190	58.60	14.1	6.4	12.6	5.7	11.4	5.2
190	58.60	13.8	6.3	12.6	5.7	11.7	5.3	200	61.68	13.2	6.0	12.0	5.4	11.1	5.0	200	61.68	13.3	6.0	12.0	5.4	10.9	4.9
200	61.68	13.0	5.9	12.0	5.4	11.2	5.1	210	64.76	12.5	5.7	11.4	5.2	10.6	4.8	210	64.76	12.6	5.7	11.4	5.2	10.5	4.8
210	64.76	12.3	5.6	11.5	5.2	10.8	4.9	220	67.85	11.8	5.4	10.9	4.9	10.2	4.6	220	67.85	11.9	5.4	10.9	4.9	10.1	4.6
220	67.85	11.7	5.3	11.0	5.0	10.4	4.7	230	70.93	11.2	5.1	10.4	4.7	9.9	4.5	230	70.93	11.3	5.1	10.4	4.7	9.7	4.4
230	70.93	11.2	5.1	10.5	4.8	10.1	4.6	240	74.02	10.7	4.9	10.0	4.5	9.6	4.4	240	74.02	10.8	4.9	9.9	4.5	9.3	4.2
240	74.02	10.7	4.9	10.2	4.6			250	77.10	10.2	4.6	9.6	4.4	9.3	4.2	250	77.10	10.2	4.6	9.5	4.3	9.0	4.1
250	77.10	10.2	4.6					260	80.18	9.7	4.4	9.3	4.2			260	80.18	9.8	4.4	9.1	4.1	8.8	4.0
								270	83.27	9.3	4.2					270	83.27	9.3	4.2	8.8	4.0	8.5	3.9



Load Chart With Long Range Boom & Jib – Extended Gauge – 360° Rotation – ABC + A [221,100 75,000 lb (100.3 + 34.0kg)] Cwt																							
205 ft (63.22m) Boom Length												100 ft (30.84m) Jib Length											
205 ft (63.22m) Boom Length								225 ft (69.39m) Boom Length								255 ft (78.64m) Boom Length							
Load Radius		5° Jib Offset		15° Jib Offset		25° Jib Offset		Load Radius		5° Jib Offset		15° Jib Offset		25° Jib Offset		Load Radius		5° Jib Offset		15° Jib Offset		25° Jib Offset	
ft	m	kips	mt	kips	mt	kips	mt	ft	m	kips	mt	kips	mt	kips	mt	ft	m	kips	mt	kips	mt	kips	mt
60	18.50	36.3	16.5					60	18.50	32.1	14.6					65	20.05	26.5	12.0				
65	20.05	36.2	16.4					65	20.05	31.9	14.5					70	21.59	26.2	11.9				
70	21.59	34.5	15.6					70	21.59	31.8	14.4					75	23.13	26.0	11.8				
75	23.13	32.9	14.9	26.5	12.0			75	23.13	31.6	14.3					80	24.67	25.8	11.7				
80	24.67	31.4	14.2	25.4	11.5			80	24.67	31.2	14.2	25.2	11.4			85	26.21	25.6	11.6	23.9	10.8		
85	26.21	30.0	13.6	24.4	11.1			85	26.21	29.9	13.6	24.3	11.0			90	27.76	25.3	11.5	23.1	10.5		
90	27.76	28.7	13.0	23.5	10.7	16.9	7.7	90	27.76	28.7	13.0	23.4	10.6			100	30.84	24.9	11.3	21.5	9.8	16.9	7.7
100	30.84	26.4	12.0	21.8	9.9	16.9	7.7	100	30.84	26.4	12.0	21.7	9.8	16.9	7.7	110	33.92	24.2	11.0	20.0	9.1	16.9	7.7
110	33.92	24.3	11.0	20.3	9.2	16.9	7.7	110	33.92	24.4	11.1	20.2	9.2	16.9	7.7	120	37.01	22.5	10.2	18.7	8.5	15.9	7.2
120	37.01	22.5	10.2	19.0	8.6	16.3	7.4	120	37.01	22.6	10.3	18.9	8.6	16.1	7.3	130	40.09	20.9	9.5	17.6	8.0	15.0	6.8
130	40.09	20.9	9.5	17.7	8.0	15.3	6.9	130	40.09	21.0	9.5	17.7	8.0	15.2	6.9	140	43.18	19.5	8.8	16.5	7.5	14.2	6.4
140	43.18	19.4	8.8	16.7	7.6	14.5	6.6	140	43.18	19.6	8.9	16.6	7.5	14.4	6.5	150	46.26	18.2	8.3	15.5	7.0	13.4	6.1
150	46.26	18.2	8.3	15.7	7.1	13.8	6.3	150	46.26	18.3	8.3	15.7	7.1	13.6	6.2	160	49.34	17.1	7.8	14.6	6.6	12.7	5.8
160	49.34	17.0	7.7	14.8	6.7	13.1	5.9	160	49.34	17.1	7.8	14.8	6.7	12.9	5.9	170	52.43	16.0	7.3	13.8	6.3	12.1	5.5
170	52.43	16.0	7.3	14.0	6.4	12.4	5.6	170	52.43	16.1	7.3	13.9	6.3	12.3	5.6	180	55.51	15.1	6.8	13.1	5.9	11.5	5.2
180	55.51	15.0	6.8	13.2	6.0	11.8	5.4	180	55.51	15.1	6.8	13.2	6.0	11.7	5.3	190	58.60	14.2	6.4	12.4	5.6	11.0	5.0
190	58.60	14.2	6.4	12.6	5.7	11.3	5.1	190	58.60	14.3	6.5	12.5	5.7	11.2	5.1	200	61.68	13.4	6.1	11.8	5.4	10.5	4.8
200	61.68	13.4	6.1	11.9	5.4	10.8	4.9	200	61.68	13.5	6.1	11.9	5.4	10.7	4.9	210	64.76	12.7	5.8	11.2	5.1	10.0	4.5
210	64.76	12.7	5.8	11.4	5.2	10.3	4.7	210	64.76	12.7	5.8	11.3	5.1	10.2	4.6	220	67.85	12.0	5.4	10.6	4.8	9.6	4.4
220	67.85	12.0	5.4	10.8	4.9	9.9	4.5	220	67.85	12.1	5.5	10.8	4.9	9.8	4.4	230	70.93	11.4	5.2	10.1	4.6	9.2	4.2
230	70.93	11.4	5.2	10.3	4.7	9.5	4.3	230	70.93	11.4	5.2	10.3	4.7	9.4	4.3	240	74.02	10.8	4.9	9.7	4.4	8.8	4.0
240	74.02	10.8	4.9	9.9	4.5	9.2	4.2	240	74.02	10.9	4.9	9.8	4.4	9.0	4.1	250	77.10	10.2	4.6	9.2	4.2	8.4	3.8
250	77.10	10.3	4.7	9.5	4.3	8.8	4.0	250	77.10	10.3	4.7	9.4	4.3	8.7	3.9	260	80.18	9.7	4.4	8.8	4.0	8.1	3.7
260	80.18	9.8	4.4	9.1	4.1	8.5	3.9	260	80.18	9.8	4.4	9.0	4.1	8.4	3.8	270	83.27	9.2	4.2	8.4	3.8	7.8	3.5
270	83.27	9.4	4.3	8.7	3.9	8.3	3.8	270	83.27	9.4	4.3	8.6	3.9	8.1	3.7	280	86.35	8.8	4.0	8.1	3.7	7.5	3.4
280	86.35	8.9	4.0	8.4	3.8	8.0	3.6	280	86.35	8.9	4.0	8.3	3.8	7.8	3.5	290	89.44	7.9	3.6	7.7	3.5	7.2	3.3
290	89.44	8.5	3.9	8.1	3.7	7.8	3.5	290	89.44	8.5	3.9	7.9	3.6	7.6	3.4	300	92.52	7.0	3.2	7.4	3.4	7.0	3.2
300	92.52	8.2	3.7	7.8	3.5			300	92.52	8.2	3.7	7.6	3.4	7.4	3.4	310	95.60	6.1	2.8	6.5	2.9	6.8	3.1
310	95.60	7.8	3.5					310	95.60	7.8	3.5	7.4	3.4	7.2	3.3	320	98.69	5.3	2.4	5.6	2.5	5.9	2.7
								320	98.69	6.7	3.0	6.5	2.9			330	101.77	4.5	2.0	4.8	2.2	5.0	2.3
								330	101.77	5.3	2.4					340	104.86	3.6	1.6	3.9	1.8		
																350	107.94	2.5	1.1	2.8	1.3		

Load Chart With Long Range Boom & Jib – Extended Gauge – 360° Rotation – ABC + A [221,100 75,000 lb (100.3 + 34.0kg)] Cwt																			
275 ft (84.81m) Boom Length												100 ft (30.84m) Jib Length							
Load Radius		5° Jib Offset		15° Jib Offset		25° Jib Offset		Load Radius		5° Jib Offset		15° Jib Offset		25° Jib Offset					
		kips	mt	kips	mt	kips	mt			kips	mt	kips	mt	kips	mt				
ft	m							ft	m										
70	21.59	23.0	10.4					70	21.59	20.2	9.2								
75	23.13	22.8	10.3					75	23.13	20.0	9.1								
80	24.67	22.5	10.2					80	24.67	19.7	8.9								
85	26.21	22.3	10.1	21.2	9.6			85	26.21	19.5	8.8								
90	27.76	22.0	10.0	20.9	9.5			90	27.76	19.2	8.7	18.3	8.3						
100	30.84	21.5	9.8	20.3	9.2	16.9	7.7	100	30.84	18.7	8.5	17.7	8.0						
110	33.92	21.1	9.6	19.7	8.9	16.7	7.6	110	33.92	18.2	8.3	17.2	7.8	15.4	7.0				
120	37.01	20.6	9.3	18.6	8.4	15.7	7.1	120	37.01	17.7	8.0	16.6	7.5	14.9	6.8				
130	40.09	20.1	9.1	17.4	7.9	14.8	6.7	130	40.09	17.2	7.8	16.1	7.3	14.4	6.5				
140	43.18	19.4	8.8	16.4	7.4	14.0	6.4	140	43.18	16.7	7.6	15.6	7.1	13.9	6.3				
150	46.26	18.2	8.3	15.4	7.0	13.3	6.0	150	46.26	16.3	7.4	15.2	6.9	13.1	5.9				
160	49.34	17.1	7.8	14.6	6.6	12.6	5.7	160	49.34	15.8	7.2	14.4	6.5	12.5	5.7				
170	52.43	16.0	7.3	13.8	6.3	12.0	5.4	170	52.43	15.4	7.0	13.6	6.2	11.8	5.4				
180	55.51	15.1	6.8	13.0	5.9	11.4	5.2	180	55.51	14.9	6.8	12.9	5.9	11.3	5.1				
190	58.60	14.2	6.4	12.4	5.6	10.9	4.9	190	58.60	14.1	6.4	12.2	5.5	10.7	4.9				
200	61.68	13.4	6.1	11.7	5.3	10.4	4.7	200	61.68	13.4	6.1	11.6	5.3	10.2	4.6				
210	64.76	12.7	5.8	11.1	5.0	9.9	4.5	210	64.76	12.7	5.8	11.1	5.0	9.8	4.4				
220	67.85	12.0	5.4	10.6	4.8	9.4	4.3	220	67.85	12.0	5.4	10.5	4.8	9.3	4.2				
230	70.93	11.4	5.2	10.1	4.6	9.0	4.1	230	70.93	11.4	5.2	10.0	4.5	8.9	4.0				
240	74.02	10.8	4.9	9.6	4.4	8.7	3.9	240	74.02	10.8	4.9	9.5	4.3	8.5	3.9				
250	77.10	10.3	4.7	9.2	4.2	8.3	3.8	250	77.10	10.2	4.6	9.1	4.1	8.2	3.7				
260	80.18	9.8	4.4	8.8	4.0	8.0	3.6	260	80.18	9.7	4.4	8.7	3.9	7.9	3.6				
270	83.27	9.3	4.2	8.4	3.8	7.7	3.5	270	83.27	8.9	4.0	8.3	3.8	7.6	3.4				
280	86.35	8.3	3.8	8.0	3.6	7.4	3.4	280	86.35	7.8	3.5	8.0	3.6	7.3	3.3				
290	89.44	7.3	3.3	7.7	3.5	7.1	3.2	290	89.44	6.8	3.1	7.4	3.4	7.0	3.2				
300	92.52	6.4	2.9	6.9	3.1	6.9	3.1	300	92.52	5.9	2.7	6.4	2.9	6.7	3.0				
310	95.60	5.5	2.5	6.0	2.7	6.3	2.9	310	95.60	5.0	2.3	5.5	2.5	6.0	2.7				
320	98.69	4.7	2.1	5.1	2.3	5.4	2.4	320	98.69	4.2	1.9	4.7	2.1	5.1	2.3				
330	101.77	3.9	1.8	4.3	2.0	4.5	2.0	330	101.77	3.4	1.5	3.9	1.8	4.2	1.9				
340	104.86	3.2	1.5	3.5	1.6	3.7	1.7	340	104.86	2.7	1.2	3.1	1.4	3.4	1.5				
350	107.94	2.5	1.1	2.8	1.3	2.9	1.3	350	107.94	2.0	0.9	2.4	1.1	2.6	1.2				
								360	111.02										
								370	114.11										

Load Chart With Long Range Boom & Jib – Extended Gauge – 360° Rotation – ABC + A [221,100 75,000 lb (100.3 + 34.0kg)] Cwt																							
85 ft (26.21m) Boom Length												120 ft (37.01m) Jib Length											
85 ft (26.21m) Boom Length								105 ft (32.38m) Boom Length								125 ft (38.55m) Boom Length							
Load Radius		5° Jib Offset		15° Jib Offset		25° Jib Offset		Load Radius		5° Jib Offset		15° Jib Offset		25° Jib Offset		Load Radius		5° Jib Offset		15° Jib Offset		25° Jib Offset	
ft	m	kips	mt	kips	mt	kips	mt	ft	m	kips	mt	kips	mt	kips	mt	ft	m	kips	mt	kips	mt	kips	mt
45	13.88	36.2	16.4					50	15.42	35.4	16.1					50	15.42	35.2	16.0				
50	15.42	35.5	16.1					55	16.96	34.8	15.8					55	16.96	34.6	15.7				
55	16.96	34.7	15.7					60	18.50	33.8	15.3					60	18.50	33.6	15.2				
60	18.50	34.0	15.4					65	20.05	31.9	14.5					65	20.05	31.7	14.4				
65	20.05	32.5	14.7	23.1	10.5			70	21.59	30.1	13.7	23.1	10.5			70	21.59	30.0	13.6	23.1	10.5		
70	21.59	30.7	13.9	23.1	10.5			75	23.13	28.6	13.0	23.1	10.5			75	23.13	28.5	12.9	23.1	10.5		
75	23.13	29.1	13.2	23.1	10.5			80	24.67	27.1	12.3	23.1	10.5			80	24.67	27.1	12.3	22.8	10.3		
80	24.67	27.6	12.5	23.1	10.5			85	26.21	25.8	11.7	22.3	10.1			85	26.21	25.7	11.7	21.9	9.9		
85	26.21	26.3	11.9	23.1	10.5	14.1	6.4	90	27.76	24.6	11.2	21.4	9.7	14.1	6.4	90	27.76	24.5	11.1	20.9	9.5	14.1	6.4
90	27.76	25.0	11.3	22.2	10.1	14.1	6.4	100	30.84	22.4	10.2	19.7	8.9	14.1	6.4	100	30.84	22.4	10.2	19.3	8.8	14.1	6.4
100	30.84	22.8	10.3	20.4	9.3	14.1	6.4	110	33.92	20.6	9.3	18.2	8.3	14.1	6.4	110	33.92	20.5	9.3	17.8	8.1	14.1	6.4
110	33.92	21.0	9.5	18.9	8.6	14.1	6.4	120	37.01	18.9	8.6	16.8	7.6	14.1	6.4	120	37.01	18.9	8.6	16.6	7.5	14.1	6.4
120	37.01	19.3	8.8	17.5	7.9	14.1	6.4	130	40.09	17.5	7.9	15.7	7.1	14.1	6.4	130	40.09	17.5	7.9	15.4	7.0	13.7	6.2
130	40.09	17.9	8.1	16.3	7.4	14.1	6.4	140	43.18	16.3	7.4	14.7	6.7	13.3	6.0	140	43.18	16.2	7.3	14.4	6.5	12.9	5.9
140	43.18	16.6	7.5	15.2	6.9	14.0	6.4	150	46.26	15.2	6.9	13.7	6.2	12.5	5.7	150	46.26	15.1	6.8	13.5	6.1	12.1	5.5
150	46.26	15.5	7.0	14.3	6.5	13.2	6.0	160	49.34	14.2	6.4	12.9	5.9	11.8	5.4	160	49.34	14.1	6.4	12.7	5.8	11.5	5.2
160	49.34	14.5	6.6	13.4	6.1	12.5	5.7	170	52.43	13.3	6.0	12.2	5.5	11.2	5.1	170	52.43	13.2	6.0	12.0	5.4	10.9	4.9
170	52.43	13.6	6.2	12.7	5.8	11.9	5.4	180	55.51	12.5	5.7	11.5	5.2	10.7	4.9	180	55.51	12.4	5.6	11.3	5.1	10.3	4.7
180	55.51	12.9	5.9	12.0	5.4	11.3	5.1	190	58.60	11.8	5.4	10.9	4.9	10.2	4.6	190	58.60	11.7	5.3	10.7	4.9	9.8	4.4
190	58.60	12.1	5.5	11.4	5.2	10.9	4.9	200	61.68	11.1	5.0	10.4	4.7	9.8	4.4	200	61.68	11.0	5.0	10.1	4.6	9.4	4.3
200	61.68	11.5	5.2	10.9	4.9	10.5	4.8	210	64.76	10.5	4.8	9.9	4.5	9.4	4.3	210	64.76	10.4	4.7	9.6	4.4	9.0	4.1
210	64.76	11.0	5.0	10.6	4.8			220	67.85	10.0	4.5	9.5	4.3	9.2	4.2	220	67.85	9.9	4.5	9.2	4.2	8.7	3.9
								230	70.93	9.5	4.3					230	70.93	9.4	4.3	8.8	4.0	8.4	3.8
																240	74.02	8.9	4.0	8.5	3.9	8.2	3.7
																250	77.10	8.5	3.9				



Load Chart With Long Range Boom & Jib – Extended Gauge – 360° Rotation – ABC + A [221,100 75,000 lb (100.3 + 34.0kg)] Cwt																							
205 ft (63.22m) Boom Length												120 ft (37.01m) Jib Length											
205 ft (63.22m) Boom Length								225 ft (69.39m) Boom Length								255 ft (78.64m) Boom Length							
Load Radius		5° Jib Offset		15° Jib Offset		25° Jib Offset		Load Radius		5° Jib Offset		15° Jib Offset		25° Jib Offset		Load Radius		5° Jib Offset		15° Jib Offset		25° Jib Offset	
ft	m	kips	mt	kips	mt	kips	mt	ft	m	kips	mt	kips	mt	kips	mt	ft	m	kips	mt	kips	mt	kips	mt
65	20.05	29.8	13.5					65	20.05	26.9	12.2					70	21.59	22.7	10.3				
70	21.59	29.8	13.5					70	21.59	26.8	12.2					75	23.13	22.6	10.3				
75	23.13	28.6	13.0					75	23.13	26.6	12.1					80	24.67	22.4	10.2				
80	24.67	27.3	12.4					80	24.67	26.5	12.0					85	26.21	22.2	10.1				
85	26.21	26.1	11.8	21.1	9.6			85	26.21	26.0	11.8	20.9	9.5			90	27.76	22.0	10.0	19.8	9.0		
90	27.76	25.0	11.3	20.2	9.2			90	27.76	24.9	11.3	20.1	9.1			100	30.84	21.6	9.8	18.4	8.3		
100	30.84	22.9	10.4	18.7	8.5	14.1	6.4	100	30.84	22.9	10.4	18.6	8.4			110	33.92	21.0	9.5	17.1	7.8	14.1	6.4
110	33.92	21.1	9.6	17.4	7.9	14.1	6.4	110	33.92	21.1	9.6	17.3	7.8	14.1	6.4	120	37.01	19.4	8.8	16.0	7.3	13.3	6.0
120	37.01	19.5	8.8	16.2	7.3	13.7	6.2	120	37.01	19.5	8.8	16.1	7.3	13.6	6.2	130	40.09	18.0	8.2	14.9	6.8	12.6	5.7
130	40.09	18.0	8.2	15.1	6.8	12.9	5.9	130	40.09	18.1	8.2	15.1	6.8	12.8	5.8	140	43.18	16.8	7.6	14.0	6.4	11.8	5.4
140	43.18	16.8	7.6	14.2	6.4	12.2	5.5	140	43.18	16.8	7.6	14.1	6.4	12.0	5.4	150	46.26	15.7	7.1	13.1	5.9	11.2	5.1
150	46.26	15.6	7.1	13.3	6.0	11.5	5.2	150	46.26	15.7	7.1	13.2	6.0	11.3	5.1	160	49.34	14.6	6.6	12.3	5.6	10.5	4.8
160	49.34	14.6	6.6	12.5	5.7	10.8	4.9	160	49.34	14.7	6.7	12.4	5.6	10.7	4.9	170	52.43	13.7	6.2	11.6	5.3	10.0	4.5
170	52.43	13.6	6.2	11.8	5.4	10.3	4.7	170	52.43	13.7	6.2	11.7	5.3	10.2	4.6	180	55.51	12.8	5.8	10.9	4.9	9.4	4.3
180	55.51	12.8	5.8	11.1	5.0	9.7	4.4	180	55.51	12.9	5.9	11.0	5.0	9.6	4.4	190	58.60	12.0	5.4	10.3	4.7	8.9	4.0
190	58.60	12.0	5.4	10.5	4.8	9.2	4.2	190	58.60	12.1	5.5	10.4	4.7	9.1	4.1	200	61.68	11.3	5.1	9.7	4.4	8.5	3.9
200	61.68	11.3	5.1	9.9	4.5	8.8	4.0	200	61.68	11.4	5.2	9.8	4.4	8.7	3.9	210	64.76	10.6	4.8	9.2	4.2	8.1	3.7
210	64.76	10.6	4.8	9.4	4.3	8.4	3.8	210	64.76	10.7	4.9	9.3	4.2	8.3	3.8	220	67.85	10.0	4.5	8.7	3.9	7.7	3.5
220	67.85	10.0	4.5	8.9	4.0	8.0	3.6	220	67.85	10.1	4.6	8.8	4.0	7.9	3.6	230	70.93	9.4	4.3	8.2	3.7	7.3	3.3
230	70.93	9.5	4.3	8.4	3.8	7.6	3.4	230	70.93	9.5	4.3	8.4	3.8	7.5	3.4	240	74.02	8.9	4.0	7.8	3.5	6.9	3.1
240	74.02	9.0	4.1	8.0	3.6	7.3	3.3	240	74.02	9.0	4.1	8.0	3.6	7.2	3.3	250	77.10	8.4	3.8	7.4	3.4	6.6	3.0
250	77.10	8.5	3.9	7.6	3.4	7.0	3.2	250	77.10	8.5	3.9	7.6	3.4	6.8	3.1	260	80.18	7.9	3.6	7.0	3.2	6.3	2.9
260	80.18	8.0	3.6	7.3	3.3	6.7	3.0	260	80.18	8.0	3.6	7.2	3.3	6.6	3.0	270	83.27	7.5	3.4	6.7	3.0	6.0	2.7
270	83.27	7.6	3.4	6.9	3.1	6.4	2.9	270	83.27	7.6	3.4	6.9	3.1	6.3	2.9	280	86.35	7.1	3.2	6.4	2.9	5.8	2.6
280	86.35	7.2	3.3	6.6	3.0	6.2	2.8	280	86.35	7.2	3.3	6.5	2.9	6.0	2.7	290	89.44	6.7	3.0	6.1	2.8	5.5	2.5
290	89.44	6.9	3.1	6.3	2.9	6.0	2.7	290	89.44	6.9	3.1	6.2	2.8	5.8	2.6	300	92.52	6.4	2.9	5.8	2.6	5.3	2.4
300	92.52	6.5	2.9	6.1	2.8	5.8	2.6	300	92.52	6.5	2.9	6.0	2.7	5.6	2.5	310	95.60	6.0	2.7	5.5	2.5	5.1	2.3
310	95.60	6.2	2.8	5.8	2.6	5.7	2.6	310	95.60	6.2	2.8	5.7	2.6	5.4	2.4	320	98.69	5.5	2.5	5.3	2.4	4.9	2.2
320	98.69	5.9	2.7	5.6	2.5			320	98.69	5.9	2.7	5.5	2.5	5.2	2.4	330	101.77	4.8	2.2	5.0	2.3	4.7	2.1
330	101.77	5.7	2.6					330	101.77	5.6	2.5	5.3	2.4	5.1	2.3	340	104.86	4.0	1.8	4.4	2.0	4.6	2.1
								340	104.86	5.1	2.3	5.0	2.3			350	107.94	3.2	1.5	3.6	1.6	3.8	1.7
								350	107.94	3.9	1.8					360	111.02	2.2	1.0	2.6	1.2		

Load Chart With Long Range Boom & Jib – Extended Gauge – 360° Rotation – ABC + A [221,100 75,000 lb (100.3 + 34.0kg)] Cwt																			
275 ft (84.81m) Boom Length												120 ft (37.01m) Jib Length							
275 ft (84.81m) Boom Length								295 ft (90.98m) Boom Length											
Load Radius		5° Jib Offset		15° Jib Offset		25° Jib Offset		Load Radius		5° Jib Offset		15° Jib Offset		25° Jib Offset					
ft	m	kips	mt	kips	mt	kips	mt	ft	m	kips	mt	kips	mt	kips	mt				
75	23.13	20.0	9.1					75	23.13	17.7	8.0								
80	24.67	19.8	9.0					80	24.67	17.5	7.9								
85	26.21	19.6	8.9					85	26.21	17.3	7.8								
90	27.76	19.4	8.8					90	27.76	17.1	7.8								
100	30.84	19.0	8.6	17.7	8.0			100	30.84	16.6	7.5	15.6	7.1						
110	33.92	18.6	8.4	17.0	7.7	14.1	6.4	110	33.92	16.2	7.3	15.2	6.9						
120	37.01	18.2	8.3	15.9	7.2	13.2	6.0	120	37.01	15.8	7.2	14.7	6.7	12.9	5.9				
130	40.09	17.8	8.1	14.8	6.7	12.4	5.6	130	40.09	15.3	6.9	14.2	6.4	12.3	5.6				
140	43.18	16.7	7.6	13.9	6.3	11.7	5.3	140	43.18	14.9	6.8	13.8	6.3	11.6	5.3				
150	46.26	15.6	7.1	13.0	5.9	11.0	5.0	150	46.26	14.5	6.6	12.9	5.9	10.9	4.9				
160	49.34	14.6	6.6	12.3	5.6	10.4	4.7	160	49.34	14.1	6.4	12.2	5.5	10.3	4.7				
170	52.43	13.7	6.2	11.5	5.2	9.9	4.5	170	52.43	13.6	6.2	11.4	5.2	9.7	4.4				
180	55.51	12.8	5.8	10.9	4.9	9.3	4.2	180	55.51	12.8	5.8	10.8	4.9	9.2	4.2				
190	58.60	12.0	5.4	10.3	4.7	8.8	4.0	190	58.60	12.0	5.4	10.2	4.6	8.7	3.9				
200	61.68	11.3	5.1	9.7	4.4	8.4	3.8	200	61.68	11.3	5.1	9.6	4.4	8.3	3.8				
210	64.76	10.7	4.9	9.2	4.2	8.0	3.6	210	64.76	10.6	4.8	9.1	4.1	7.9	3.6				
220	67.85	10.0	4.5	8.7	3.9	7.6	3.4	220	67.85	10.0	4.5	8.6	3.9	7.5	3.4				
230	70.93	9.5	4.3	8.2	3.7	7.2	3.3	230	70.93	9.4	4.3	8.1	3.7	7.1	3.2				
240	74.02	8.9	4.0	7.8	3.5	6.9	3.1	240	74.02	8.9	4.0	7.7	3.5	6.8	3.1				
250	77.10	8.4	3.8	7.4	3.4	6.5	2.9	250	77.10	8.4	3.8	7.3	3.3	6.4	2.9				
260	80.18	8.0	3.6	7.0	3.2	6.2	2.8	260	80.18	8.0	3.6	6.9	3.1	6.1	2.8				
270	83.27	7.5	3.4	6.7	3.0	5.9	2.7	270	83.27	7.5	3.4	6.6	3.0	5.8	2.6				
280	86.35	7.1	3.2	6.3	2.9	5.7	2.6	280	86.35	7.1	3.2	6.3	2.9	5.6	2.5				
290	89.44	6.8	3.1	6.0	2.7	5.4	2.4	290	89.44	6.7	3.0	6.0	2.7	5.3	2.4				
300	92.52	6.4	2.9	5.7	2.6	5.2	2.4	300	92.52	6.1	2.8	5.7	2.6	5.1	2.3				
310	95.60	5.7	2.6	5.5	2.5	5.0	2.3	310	95.60	5.2	2.4	5.4	2.4	4.9	2.2				
320	98.69	4.9	2.2	5.2	2.4	4.8	2.2	320	98.69	4.4	2.0	5.0	2.3	4.7	2.1				
330	101.77	4.1	1.9	4.6	2.1	4.6	2.1	330	101.77	3.6	1.6	4.2	1.9	4.5	2.0				
340	104.86	3.4	1.5	3.9	1.8	4.2	1.9	340	104.86	2.9	1.3	3.4	1.5	3.8	1.7				
350	107.94	2.7	1.2	3.1	1.4	3.4	1.5	350	107.94	2.2	1.0	2.7	1.2	3.1	1.4				
360	111.02	2.1	1.0	2.4	1.1	2.7	1.2	360	111.02			2.0	0.9	2.3	1.0				
								370	114.11										
								380	117.19										



Load Chart With Long Range Boom & Jib – Extended Gauge – 360° Rotation – ABC + A [221,100 75,000 lb (100.3 + 34.0kg)] Cwt																							
145 ft (44.72m) Boom Length												140 ft (43.18m) Jib Length				185 ft (57.05m) Boom Length							
Load Radius		5° Jib Offset		15° Jib Offset		25° Jib Offset		Load Radius		5° Jib Offset		15° Jib Offset		25° Jib Offset		Load Radius		5° Jib Offset		15° Jib Offset		25° Jib Offset	
ft	m	kips	mt	kips	mt	kips	mt	ft	m	kips	mt	kips	mt	kips	mt	ft	m	kips	mt	kips	mt	kips	mt
60	18.50	26.8	12.2					60	18.50	26.2	11.9					65	20.05	25.4	11.5				
65	20.05	26.6	12.1					65	20.05	26.1	11.8					70	21.59	25.3	11.5				
70	21.59	26.5	12.0					70	21.59	26.0	11.8					75	23.13	25.1	11.4				
75	23.13	25.2	11.4					75	23.13	25.2	11.4					80	24.67	24.0	10.9				
80	24.67	24.0	10.9					80	24.67	24.0	10.9					85	26.21	22.9	10.4				
85	26.21	22.8	10.3	19.0	8.6			85	26.21	22.9	10.4	18.7	8.5			90	27.76	21.9	9.9	17.8	8.1		
90	27.76	21.8	9.9	18.2	8.3			90	27.76	21.8	9.9	18.0	8.2			100	30.84	20.0	9.1	16.4	7.4		
100	30.84	19.9	9.0	16.7	7.6			100	30.84	20.0	9.1	16.6	7.5			110	33.92	18.4	8.3	15.2	6.9	12.1	5.5
110	33.92	18.2	8.3	15.4	7.0	12.1	5.5	110	33.92	18.3	8.3	15.3	6.9	12.1	5.5	120	37.01	16.9	7.7	14.1	6.4	11.9	5.4
120	37.01	16.7	7.6	14.3	6.5	12.1	5.5	120	37.01	16.8	7.6	14.2	6.4	12.1	5.5	130	40.09	15.6	7.1	13.1	5.9	11.1	5.0
130	40.09	15.5	7.0	13.3	6.0	11.5	5.2	130	40.09	15.5	7.0	13.2	6.0	11.3	5.1	140	43.18	14.5	6.6	12.2	5.5	10.4	4.7
140	43.18	14.3	6.5	12.4	5.6	10.8	4.9	140	43.18	14.4	6.5	12.3	5.6	10.6	4.8	150	46.26	13.4	6.1	11.4	5.2	9.8	4.4
150	46.26	13.3	6.0	11.5	5.2	10.1	4.6	150	46.26	13.4	6.1	11.5	5.2	9.9	4.5	160	49.34	12.5	5.7	10.7	4.9	9.2	4.2
160	49.34	12.4	5.6	10.8	4.9	9.5	4.3	160	49.34	12.4	5.6	10.7	4.9	9.3	4.2	170	52.43	11.7	5.3	10.0	4.5	8.7	3.9
170	52.43	11.5	5.2	10.1	4.6	9.0	4.1	170	52.43	11.6	5.3	10.1	4.6	8.8	4.0	180	55.51	10.9	4.9	9.4	4.3	8.2	3.7
180	55.51	10.8	4.9	9.5	4.3	8.5	3.9	180	55.51	10.8	4.9	9.4	4.3	8.3	3.8	190	58.60	10.2	4.6	8.8	4.0	7.7	3.5
190	58.60	10.1	4.6	8.9	4.0	8.0	3.6	190	58.60	10.1	4.6	8.9	4.0	7.8	3.5	200	61.68	9.5	4.3	8.3	3.8	7.3	3.3
200	61.68	9.4	4.3	8.4	3.8	7.6	3.4	200	61.68	9.5	4.3	8.3	3.8	7.4	3.4	210	64.76	8.9	4.0	7.8	3.5	6.9	3.1
210	64.76	8.9	4.0	7.9	3.6	7.2	3.3	210	64.76	8.9	4.0	7.9	3.6	7.0	3.2	220	67.85	8.4	3.8	7.4	3.4	6.5	2.9
220	67.85	8.3	3.8	7.5	3.4	6.8	3.1	220	67.85	8.3	3.8	7.4	3.4	6.7	3.0	230	70.93	7.9	3.6	6.9	3.1	6.2	2.8
230	70.93	7.8	3.5	7.1	3.2	6.5	2.9	230	70.93	7.9	3.6	7.0	3.2	6.3	2.9	240	74.02	7.4	3.4	6.6	3.0	5.9	2.7
240	74.02	7.4	3.4	6.7	3.0	6.2	2.8	240	74.02	7.4	3.4	6.6	3.0	6.0	2.7	250	77.10	7.0	3.2	6.2	2.8	5.6	2.5
250	77.10	7.0	3.2	6.4	2.9	6.0	2.7	250	77.10	7.0	3.2	6.3	2.9	5.8	2.6	260	80.18	6.6	3.0	5.9	2.7	5.3	2.4
260	80.18	6.6	3.0	6.1	2.8	5.7	2.6	260	80.18	6.6	3.0	6.0	2.7	5.5	2.5	270	83.27	6.2	2.8	5.6	2.5	5.1	2.3
270	83.27	6.2	2.8	5.8	2.6	5.5	2.5	270	83.27	6.2	2.8	5.7	2.6	5.3	2.4	280	86.35	5.8	2.6	5.3	2.4	4.9	2.2
280	86.35	5.9	2.7	5.6	2.5			280	86.35	5.9	2.7	5.4	2.4	5.1	2.3	290	89.44	5.5	2.5	5.0	2.3	4.7	2.1
290	89.44	5.7	2.6					290	89.44	5.6	2.5	5.2	2.4	4.9	2.2	300	92.52	5.2	2.4	4.8	2.2	4.5	2.0
								300	92.52	5.3	2.4	5.0	2.3			310	95.60	4.9	2.2	4.6	2.1	4.4	2.0
								310	95.60	5.0	2.3					320	98.69	4.7	2.1	4.4	2.0		
																330	101.77	4.4	2.0				



Load Chart With Long Range Boom & Jib – Extended Gauge – 360° Rotation – ABC + A [221,100 75,000 lb (100.3 + 34.0kg)] Cwt																							
205 ft (63.22m) Boom Length												140 ft (43.18m) Jib Length											
205 ft (63.22m) Boom Length								225 ft (69.39m) Boom Length								255 ft (78.64m) Boom Length							
Load Radius		5° Jib Offset		15° Jib Offset		25° Jib Offset		Load Radius		5° Jib Offset		15° Jib Offset		25° Jib Offset		Load Radius		5° Jib Offset		15° Jib Offset		25° Jib Offset	
ft	m	kips	mt	kips	mt	kips	mt	ft	m	kips	mt	kips	mt	kips	mt	ft	m	kips	mt	kips	mt	kips	mt
70	21.59	24.2	11.0					70	21.59	22.3	10.1					75	23.13	19.3	8.8				
75	23.13	24.1	10.9					75	23.13	22.2	10.1					80	24.67	19.2	8.7				
80	24.67	23.9	10.8					80	24.67	22.1	10.0					85	26.21	19.0	8.6				
85	26.21	22.9	10.4					85	26.21	22.0	10.0					90	27.76	18.9	8.6				
90	27.76	21.9	9.9	17.6	8.0			90	27.76	21.8	9.9					100	30.84	18.6	8.4	15.9	7.2		
100	30.84	20.1	9.1	16.3	7.4			100	30.84	20.0	9.1	16.1	7.3			110	33.92	18.3	8.3	14.8	6.7		
110	33.92	18.4	8.3	15.1	6.8			110	33.92	18.5	8.4	15.0	6.8			120	37.01	17.0	7.7	13.7	6.2	11.3	5.1
120	37.01	17.0	7.7	14.0	6.4	11.7	5.3	120	37.01	17.0	7.7	13.9	6.3	11.5	5.2	130	40.09	15.7	7.1	12.8	5.8	10.6	4.8
130	40.09	15.7	7.1	13.0	5.9	10.9	4.9	130	40.09	15.8	7.2	12.9	5.9	10.8	4.9	140	43.18	14.6	6.6	11.9	5.4	9.9	4.5
140	43.18	14.6	6.6	12.1	5.5	10.3	4.7	140	43.18	14.6	6.6	12.1	5.5	10.1	4.6	150	46.26	13.5	6.1	11.2	5.1	9.3	4.2
150	46.26	13.5	6.1	11.3	5.1	9.6	4.4	150	46.26	13.6	6.2	11.3	5.1	9.5	4.3	160	49.34	12.6	5.7	10.4	4.7	8.7	3.9
160	49.34	12.6	5.7	10.6	4.8	9.1	4.1	160	49.34	12.6	5.7	10.5	4.8	8.9	4.0	170	52.43	11.7	5.3	9.8	4.4	8.2	3.7
170	52.43	11.7	5.3	9.9	4.5	8.5	3.9	170	52.43	11.8	5.4	9.9	4.5	8.4	3.8	180	55.51	10.9	4.9	9.1	4.1	7.7	3.5
180	55.51	10.9	4.9	9.3	4.2	8.0	3.6	180	55.51	11.0	5.0	9.3	4.2	7.9	3.6	190	58.60	10.2	4.6	8.6	3.9	7.3	3.3
190	58.60	10.2	4.6	8.8	4.0	7.6	3.4	190	58.60	10.3	4.7	8.7	3.9	7.5	3.4	200	61.68	9.5	4.3	8.1	3.7	6.9	3.1
200	61.68	9.6	4.4	8.2	3.7	7.2	3.3	200	61.68	9.6	4.4	8.2	3.7	7.0	3.2	210	64.76	8.9	4.0	7.6	3.4	6.5	2.9
210	64.76	9.0	4.1	7.7	3.5	6.8	3.1	210	64.76	9.0	4.1	7.7	3.5	6.7	3.0	220	67.85	8.4	3.8	7.1	3.2	6.1	2.8
220	67.85	8.4	3.8	7.3	3.3	6.4	2.9	220	67.85	8.4	3.8	7.2	3.3	6.3	2.9	230	70.93	7.8	3.5	6.7	3.0	5.8	2.6
230	70.93	7.9	3.6	6.9	3.1	6.1	2.8	230	70.93	7.9	3.6	6.8	3.1	6.0	2.7	240	74.02	7.3	3.3	6.3	2.9	5.4	2.4
240	74.02	7.4	3.4	6.5	2.9	5.8	2.6	240	74.02	7.4	3.4	6.4	2.9	5.6	2.5	250	77.10	6.9	3.1	5.9	2.7	5.1	2.3
250	77.10	7.0	3.2	6.1	2.8	5.5	2.5	250	77.10	7.0	3.2	6.1	2.8	5.3	2.4	260	80.18	6.4	2.9	5.6	2.5	4.9	2.2
260	80.18	6.6	3.0	5.8	2.6	5.2	2.4	260	80.18	6.6	3.0	5.7	2.6	5.1	2.3	270	83.27	6.0	2.7	5.2	2.4	4.6	2.1
270	83.27	6.2	2.8	5.5	2.5	5.0	2.3	270	83.27	6.2	2.8	5.4	2.4	4.8	2.2	280	86.35	5.7	2.6	4.9	2.2	4.4	2.0
280	86.35	5.8	2.6	5.2	2.4	4.7	2.1	280	86.35	5.8	2.6	5.1	2.3	4.6	2.1	290	89.44	5.3	2.4	4.7	2.1	4.1	1.9
290	89.44	5.5	2.5	4.9	2.2	4.5	2.0	290	89.44	5.5	2.5	4.8	2.2	4.4	2.0	300	92.52	5.0	2.3	4.4	2.0	3.9	1.8
300	92.52	5.2	2.4	4.7	2.1	4.3	2.0	300	92.52	5.1	2.3	4.6	2.1	4.1	1.9	310	95.60	4.7	2.1	4.1	1.9	3.7	1.7
310	95.60	4.9	2.2	4.4	2.0	4.1	1.9	310	95.60	4.8	2.2	4.3	2.0	4.0	1.8	320	98.69	4.4	2.0	3.9	1.8	3.5	1.6
320	98.69	4.6	2.1	4.2	1.9	4.0	1.8	320	98.69	4.6	2.1	4.1	1.9	3.8	1.7	330	101.77	4.1	1.9	3.7	1.7	3.3	1.5
330	101.77	4.4	2.0	4.0	1.8	3.9	1.8	330	101.77	4.3	2.0	3.9	1.8	3.6	1.6	340	104.86	3.9	1.8	3.5	1.6	3.2	1.5
340	104.86	4.1	1.9	3.9	1.8			340	104.86	4.1	1.9	3.7	1.7	3.5	1.6	350	107.94	3.5	1.6	3.3	1.5	3.0	1.4
350	107.94	3.9	1.8					350	107.94	3.8	1.7	3.5	1.6	3.4	1.5	360	111.02	2.6	1.2	3.1	1.4	2.9	1.3
								360	111.02	3.6	1.6	3.4	1.5			370	114.11			2.2	1.0	2.5	1.1
								370	114.11	2.6	1.2												

Load Chart With Long Range Boom & Jib – Extended Gauge – 360° Rotation – ABC + A [221,100 75,000 lb (100.3 + 34.0kg)] Cwt																			
275 ft (84.81m) Boom Length												140 ft (43.18m) Jib Length							
275 ft (84.81m) Boom Length								295 ft (90.98m) Boom Length											
Load Radius		5° Jib Offset		15° Jib Offset		25° Jib Offset		Load Radius		5° Jib Offset		15° Jib Offset		25° Jib Offset					
ft	m	kips	mt	kips	mt	kips	mt	ft	m	kips	mt	kips	mt	kips	mt				
80	24.67	17.3	7.8					80	24.67	15.4	7.0								
85	26.21	17.1	7.8					85	26.21	15.2	6.9								
90	27.76	16.9	7.7					90	27.76	15.1	6.8								
100	30.84	16.6	7.5	15.3	6.9			100	30.84	14.7	6.7								
110	33.92	16.2	7.3	14.6	6.6			110	33.92	14.3	6.5	13.3	6.0						
120	37.01	15.9	7.2	13.6	6.2			120	37.01	13.9	6.3	12.9	5.9						
130	40.09	15.5	7.0	12.7	5.8	10.5	4.8	130	40.09	13.6	6.2	12.5	5.7	10.3	4.7				
140	43.18	14.5	6.6	11.9	5.4	9.8	4.4	140	43.18	13.2	6.0	11.7	5.3	9.7	4.4				
150	46.26	13.5	6.1	11.1	5.0	9.2	4.2	150	46.26	12.8	5.8	11.0	5.0	9.1	4.1				
160	49.34	12.6	5.7	10.4	4.7	8.6	3.9	160	49.34	12.5	5.7	10.3	4.7	8.5	3.9				
170	52.43	11.7	5.3	9.7	4.4	8.1	3.7	170	52.43	11.7	5.3	9.6	4.4	8.0	3.6				
180	55.51	11.0	5.0	9.1	4.1	7.6	3.4	180	55.51	10.9	4.9	9.0	4.1	7.5	3.4				
190	58.60	10.2	4.6	8.5	3.9	7.2	3.3	190	58.60	10.2	4.6	8.5	3.9	7.1	3.2				
200	61.68	9.6	4.4	8.0	3.6	6.8	3.1	200	61.68	9.5	4.3	7.9	3.6	6.7	3.0				
210	64.76	8.9	4.0	7.5	3.4	6.4	2.9	210	64.76	8.9	4.0	7.5	3.4	6.3	2.9				
220	67.85	8.4	3.8	7.1	3.2	6.0	2.7	220	67.85	8.4	3.8	7.0	3.2	5.9	2.7				
230	70.93	7.8	3.5	6.6	3.0	5.7	2.6	230	70.93	7.8	3.5	6.6	3.0	5.6	2.5				
240	74.02	7.4	3.4	6.2	2.8	5.4	2.4	240	74.02	7.4	3.4	6.2	2.8	5.3	2.4				
250	77.10	6.9	3.1	5.9	2.7	5.1	2.3	250	77.10	6.9	3.1	5.8	2.6	5.0	2.3				
260	80.18	6.5	2.9	5.5	2.5	4.8	2.2	260	80.18	6.5	2.9	5.5	2.5	4.7	2.1				
270	83.27	6.1	2.8	5.2	2.4	4.5	2.0	270	83.27	6.1	2.8	5.2	2.4	4.4	2.0				
280	86.35	5.7	2.6	4.9	2.2	4.3	2.0	280	86.35	5.7	2.6	4.9	2.2	4.2	1.9				
290	89.44	5.3	2.4	4.6	2.1	4.0	1.8	290	89.44	5.3	2.4	4.6	2.1	3.9	1.8				
300	92.52	5.0	2.3	4.3	2.0	3.8	1.7	300	92.52	5.0	2.3	4.3	2.0	3.7	1.7				
310	95.60	4.7	2.1	4.1	1.9	3.6	1.6	310	95.60	4.7	2.1	4.0	1.8	3.5	1.6				
320	98.69	4.4	2.0	3.9	1.8	3.4	1.5	320	98.69	4.4	2.0	3.8	1.7	3.3	1.5				
330	101.77	4.1	1.9	3.6	1.6	3.2	1.5	330	101.77	3.7	1.7	3.6	1.6	3.1	1.4				
340	104.86	3.5	1.6	3.4	1.5	3.1	1.4	340	104.86	3.0	1.4	3.4	1.5	3.0	1.4				
350	107.94	2.9	1.3	3.2	1.5	2.9	1.3	350	107.94	2.3	1.0	3.0	1.4	2.8	1.3				
360	111.02	2.2	1.0	2.7	1.2	2.8	1.3	360	111.02										
370	114.11			2.1	1.0	2.4	1.1	370	114.11										

This Page Intentionally Blank

**Link-Belt Construction Equipment Company** Lexington, Kentucky [www.linkbelt.com](http://www.linkbelt.com)

®Link-Belt is a registered trademark. Copyright 2007. We are constantly improving our products and therefore reserve the right to change designs and specifications.